



Summer

2017
CLASS SCHEDULE



LOS MEDANOS
COLLEGE



Join us for
HIGH SCHOOL SENIOR
SATURDAY
 April 22 or 29
 See page 38 for details.

LOS MEDANOS COLLEGE Important Dates

Contra Costa Community College District

Los Medanos College is proud to be one of the colleges in Contra Costa Community College District. The District Office is located at 500 Court Street in Martinez, California 94553.

Other colleges in the district include: Contra Costa College in San Pablo and Diablo Valley College in Pleasant Hill and San Ramon.

Board of Trustees

Vicki Gordon, *President*
 Timothy J. Farley, *Vice President*
 John E. Márquez, *Secretary*
 Greg Enholm, *Member*
 Gary Walker-Roberts, *Member*
 Kwame Baah-Arhin, *Student Trustee*

Chancellor

Dr. Fred Wood

Los Medanos College

Bob Kratochvil, *President*

Six week session June 12 – July 20

Summer 2017 Online Registration Dates:

DATE	PRIORITY GROUP	CRITERIA
April 10	Group 1	Priority registration for EOPS, DSPS, qualified veterans, qualified foster youth and CalWORKs for students under 100 degree-applicable units or in good standing
April 11	Group 2	Special registration for DSPS note takers, early graduation applicants and qualified athletes for students under 100 degree-applicable units or in good standing
April 12	Group 3a	Continuing* students with 45-75 units within the district
April 13-14	Group 3b	Continuing* students with 0-44.99 units within the district
April 17	Group 3c	Recent matriculated* high school graduates
April 18	Group 3d	Continuing* students with 75.01-99.99 units within the district
April 19	Group 3e	New matriculated* and returning* students with less than 100 units in the district
April 26	Group 4	Registration for continuing* and returning* students over 100 degree-applicable units or on 2nd semester probation or dismissal
May 8	Group 5	New non-matriculated and exempt students

Summer 2017 Open/In Person Registration Dates:

May 31	Group 6	ALL Special Admit/Concurrent high school students registration
June 1	Group 7	Open registration for all college students

Other Important Dates:

Memorial Day – Holiday, College closed May 29
 College closed on Fridays June 2 - July 28
 Independence Day Observance – Holiday, College closed July 4

* Continuing Students - Students who have been enrolled at LMC Summer 2016, Fall 2016 or Spring 2017
 * Returning students - Students who have missed more than one academic year; will need to reapply online.
 * New matriculating students - Students who have completed the orientation, assessment and student education plan.

Table of Contents

General Information

Academic Standards	33	InSite Portal and InSite Mail.....	11
Admission Information	2	New Student Workshops.....	5
Assessment Information	5	Off Campus Courses	14
Brentwood Center.....	15	Online Courses	14
Campus Directory.....	40	Parking Information.....	39
Campus Map	41	Programs of Study.....	10
Campus Policies.....	36	Refund Information	6
Course Offerings.....	16	Registration Info	2
Directions Map	42	Register Online.....	12
Fees & Tuition	6	Student Code of Conduct.....	35
Fee Waiver.....	9	Study Abroad Opportunities.....	7
Financial Assistance.....	9	Transportation Information.....	39
How to Read the Schedule.....	16	Verifications	36

Course Listing

Administration of Justice.....	17	Humanities	26
Air Conditioning & Refrigeration.....	17	Mathematics.....	26
Anthropology.....	17	Music	28
Art/Graphic Communications	17	Nursing—Registered.....	28
Astronomy	18	Nursing—Vocational.....	28
Athletics	18	Nutrition.....	29
Automotive Technology	19	Philosophy	30
Biological Science.....	19	Physical Education—Activities	29
Business.....	19	Physical Education—Education	29
Chemistry	20	Physical Education—Fitness	29
Child Development.....	21	Physics	30
Computer Science.....	21	Political Science.....	30
Counseling.....	22	Process Technology.....	30
Dramatic Arts	22	Psychology	30
Economics.....	23	Recording Arts	31
Electrical/Instrumentation Technology.....	23	Sign Language.....	31
Emergency Medical Services (EMS).....	23	Sociology.....	31
English.....	24	Spanish.....	32
English 100/100S Linked Sections.....	25	Speech/Communications.....	32
English as a Second Language.....	25	Supervised Tutoring	32
Fire Technology.....	25	Welding	32
History.....	25		

LOS MEDANOS COLLEGE

Mission

STATEMENT

Los Medanos College is a public community college that provides quality educational opportunities for those within the changing and diverse communities it serves.

By focusing on student learning and success as our first priorities, we aim to help students build their abilities and competencies as life-long learners. We create educational excellence through continually assessing our students' learning and our performance as an institution. To that end, we commit our resources and design our policies and procedures to support this mission.

Vision

Los Medanos College provides the premier educational opportunity for East County residents, where learning matters most.

Values

Values remind us of what matters most. Los Medanos College is an educational community that cares deeply about learning, collaboration, effective communication, and engagement with our surrounding community.

Accreditation

Los Medanos College is accredited by the Accrediting Commission for Community and Junior Colleges of the Western Association of Schools and Colleges, an institutional accrediting body recognized by the Commission on Recognition of Postsecondary Accreditation and the U.S. Department of Education.

Admission & Registration Information

Summer 2017 ONLINE REGISTRATION DATES

DATE	PRIORITY GROUP	CRITERIA
April 10	Group 1	Priority registration for EOPS, DSPS, qualified veterans, qualified foster youth and CalWORKs for students under 100 degree-applicable units or in good standing
April 11	Group 2	Special registration for DSPS note takers, early graduation applicants and qualified athletes for students under 100 degree-applicable units or in good standing
April 12	Group 3a	Continuing* students with 45-75 units within the district
April 13-14	Group 3b	Continuing* students with 0-44.99 units within the district
April 17	Group 3c	Recent matriculated* high school graduates
April 18	Group 3d	Continuing* students with 75.01-99.99 units within the district
April 19	Group 3e	New matriculated* and returning* students with less than 100 units in the district
April 26	Group 4	Registration for continuing* and returning* students over 100 degree-applicable units or on 2nd semester probation or dismissal
May 8	Group 5	New non-matriculated and exempt students

Summer 2017 OPEN - IN PERSON REGISTRATION DATES

May 31	Group 6	ALL Special Admit/Concurrent high school students registration
June 1	Group 7	Open registration for all college students who choose to register in person.

For more registration information: www.losmedanos.edu/admissions/instructions.asp

* Continuing students - Students who have been enrolled at LMC Summer 2016, Fall 2016, or Spring 2017.

* Returning students - Students who have missed more than one academic year; will need to reapply online.

* New matriculating students - Students who have completed the orientation, assessment and education plan.

Who May Attend

Admission is open to anyone who is:

- 18 years old or older, or
- A high school graduate or completed a high school equivalency test- GED, HiSET, TASC or the California High School Proficiency Exam or
- Students currently enrolled in the high school, at least 14 years of age and who have completed eighth grade or higher.

How to Apply

New and returning students—Applications for admissions may be submitted online at www.losmedanos.edu. After the application is uploaded, students will receive an email with the student ID and registration date.

Special admit students—New and returning students may submit a college application online. This application should be submitted prior to the in-person registration date. Continuing high school students need not resubmit a college application.

Student Status

New Student

You are a new student if you have never registered in classes at LMC.

Returning Student

Returning students have not attended during the past year.

Continuing Student

Continuing students must have attended within the past year.

Program Changes During Late Add Period

Registration With Late Add Codes

No course may be added after the late registration period. Check WebAdvisor for summer class registration deadlines.

An instructor's approval is required to register in a class that has reached maximum enrollment or on the first day of class. First priority for late adds will go to students on the wait lists. Late registration may be processed as follows:

HOW TO REGISTER

Online

www.losmedanos.edu

Go to inSite/WebAdvisor.

(Assistance available on campus.)

App "Ellucian Go"

In-Person*

1. By visiting the Admissions & Records Office in Pittsburg in Brentwood
2. All high school students begin walk-in registration on May 31.
3. All regular college students begin walk-in registration on June 1.

*College offices are closed on Fridays, June 2 - July 28.

- By Web— Go to www.losmedanos.edu and log in to WebAdvisor. Select "Late Registration (using late add code)" and enter the course section number and late add code by the last day to add;
- or
- In-Person—Bring late add code to the Admissions & Records Office.

Note: Telephone Registration is no longer available.

Drops/No Shows

Students who do not attend the first class meeting may be dropped by the instructor as a "no show." However, it is the student's responsibility to drop any class which he/she is not planning to attend. Failure to do so may result in an 'F' grade and a debt on the student's account. Non-attendance does not dismiss the debt. Students must drop classes within refund deadlines to receive a refund.

Since summer session is so short, the refund period may be the first day of the class, or the day before the first day. Please be sure you are aware of the deadlines for your class.

Since drop deadlines will vary (with or without a refund) depending upon the length of the course, students should look on WebAdvisor under **My Class Schedule**. Your schedule will also show on your InSite portal and you will receive a schedule by email to your InSite email account

Closed and Cancelled Classes

Any class may be closed to further registration when it reaches the maximum size. Additionally, if registration is insufficient in any class, it may be cancelled. For information regarding refunds for cancelled classes, see the refund policy.

Outstanding Debts

If you have an outstanding debt on your record, you will be blocked from registration, from obtaining copies of academic transcripts, and/or receiving your diploma until all debts are cleared.

Enrollment fee and nonresident tuition debts may be paid at the Cashier's Office, the Admissions & Records Office in Pittsburg or Brentwood Center. Library or Child Study Center debts must be paid at the Cashier's Office.

Residency

For purposes of establishing enrollment fees, students are identified as either residents or non-residents.

- **Residents:** those who have lived in California as legal residents for at least one year prior to the first day of a new semester and who can demonstrate intent to remain a California resident. Non-citizens who meet residency requirements and who desire to enroll as a California resident must provide documentation from USCIS.
- **Non-residents:** those who do not meet the California resident requirements. See page 6 regarding tuition for non-California residents.

Nonresident Tuition Exemption (AB 540)

In 2001, the California legislature passed a law (AB 540) that exempts certain categories of students from paying nonresident tuition. To be eligible, you must have completed at least three years of high school and have graduated (or earned a high school equivalency) while living and attending school in California.

If you believe you are eligible for this special exemption, submit the *California Nonresident Tuition Exemption Request* form to the Admissions & Records Office for review. The form is available online at www.losmedanos.edu, or at the Admissions & Records Office in Pittsburg or Brentwood.

Nonresident Tuition Exemption (SB 150)

Concurrently enrolled students (high school students enrolled in college classes) who are classified as non-resident students for tuition purposes may be eligible for the SB150 waiver of non-resident tuition while still in high school. Students must be special admit part-time (enrolled in 11 units or less) students who currently reside in California and are attending high school in California. Students wishing to take advantage of this exemption should complete a residency reclassification form and attach a copy of high school transcripts showing current enrollment. Forms and attachments should be submitted to the Admissions & Records Office in Pittsburg or Brentwood.

Nonresident Tuition Exemption (AB 2000)

Effective January 1, 2015 students may be exempt from paying Nonresident Tuition under AB 540 if they attained credits earned in California from a California high school equivalent to three or more years of full-time high school coursework and a total of three or more years of attendance in California elementary schools, California secondary schools, or a combination of those schools. The student must also have received a diploma or equivalent in California.

Nonresident Tuition Exemption (VACA, Veterans Access, Choice and Accountability Act, AB 13)

Veterans who qualify for Chapter 30 or Chapter 33 GI Bill, who live in California and enroll within 3 years of discharge from active duty service of 90 days or more may be eligible for exemption of payment of nonresident tuition.

DACA (Deferred Action for Childhood Arrivals)

Effective June 2014, students who have been given a C33 Visa (Deferred Action for Childhood Arrivals) may qualify for California residency with appropriate documentation. Please contact Admissions & Records for more information.

Special Admit High School Students

Students who are 14 years of age or older and those who have completed the eighth grade or higher are eligible for concurrent enrollment as 'special admit' students. High school students may register in up to seven (7) units in fall and spring terms or five (5) units of college coursework in the summer with approval of their school principal and parent*. With appropriate approvals, special admit students may register in advanced academic and vocational credit courses (degree applicable courses only).

Students 14 – 15 years of age and/or special admit students requesting to register in more than the unit limit are required to complete the High School Student Special Admit Introduction. Signatures for approval must be submitted at the time of registration on an *Age Waiver Form* or *Unit Limit Waiver Form*.

How to Apply & Register Online and with the Mobile App

The Contra Costa Community College District online admissions application service is available 24-hours a day.

APPLY Online

1. Go to our website at www.losmedanos.edu.
2. Click "Future Students".
3. Click "Apply (how to)".
4. Follow the application instructions.

REGISTER Online

1. Go to our website at www.losmedanos.edu.
2. Click on the InSite/WebAdvisor icon on the home page.
3. Click on the Insite/WebAdvisor icon on the next page.
4. Log in with your user ID and password.
5. Select one of the choices in the quicklinks.
6. You may register through student planning or one of the registration links.

REGISTER Mobile App Ellucian Go

1. Locate the Ellucian Go app in the Apple "App Store" or Google "Play Store".
2. Download and install Ellucian Go.
3. Launch Ellucian Go. Note: Apple devices will prompt you to allow Notifications. Click OK to allow and continue.
4. Choose your college from the list, or type your college name into the search box.
5. Installation is complete after you select your college. You will be prompted to enter your InSite Portal username and password to access items on the menu that require you to log in.

* Important note: By giving consent, parents of concurrently enrolled high school students agree they understand that the college is an adult learning environment and students are expected to behave accordingly. Additionally, they understand that classes will be taught at the college level and the curriculum and college procedures will not be modified nor will other accommodations be made.

Special Admit Enrollment Policies

Concurrently enrolled high school students may register in college courses with submission of a college application and proper approval forms on a space-available basis. Registration for high school students must be completed in-person on designated registration dates or anytime later (see registration dates on preceding page).

New special admit students must complete an application online at least 24 hours prior to registration. Continuing special admit students do not need to reapply. All special admit students must bring a Special Admit Form at the time of registration. If applicable, students will also need an *Age Waiver Form* or *Unit Limit Waiver Form*. The Special Admit Form must be filled out and signed by the appropriate principal or counselor at the student's high school and must be presented at the time of registration. Blank forms will not be accepted.

Special Admit students must bring documentation to verify prerequisites (if required) at the time of registration. Prerequisites are satisfied with a C or better in prerequisite coursework. In progress work will not be accepted.

Students may also take an assessment test in math or English to satisfy prerequisites. Appointments must be made for testing at www.losmedanos.edu/assessment or www.losmedanos.edu/brentwood/assessment. Students must have a student ID in order to sign up for the assessment test.

Special Admit Introduction Requirement

Students 14 – 15 years of age or high school students wishing to appeal the unit limit must participate in a High School Student Special Admit Introduction and request approval from the Director of Admissions & Records. View the introduction on the college web site (www.losmedanos.edu/orientation). Print a "Certificate of Completion" at the end of the introduction and bring to Admissions & Records at the time of registration.

Open Course Policy

Every course is open for registration to any person admitted to the college who meets the course prerequisites and enrollment procedures.

All courses are offered for college credit; auditing is not permitted.

Duplicate or Conflicting Courses

Students are not permitted to register in more than one section of the same course and may not register in courses that have scheduled meeting times which conflict.

Prerequisites/Advisories

Note: Some courses have prerequisites or advisories included with the course description. These are designated to assist students in the selection of course levels for their maximum success.

Important: To ensure proper placement, prerequisites for all classes will be checked at the time of registration. If you have taken a prerequisite course at an institution other than LMC, you should request to have an official transcript sent to the LMC Admissions & Records Office prior to registration or bring a transcript with you for purposes of verification.

Prerequisites may be challenged through the end of the **fifth** business day of the term. Prerequisite Challenge forms are available through the Admissions & Records Office at the Pittsburg campus only. Students must provide sufficient documentation to substantiate satisfaction of the prerequisite by other means. Once accepted, the student will be conditionally enrolled and the department chair will review the student's request. If approved, the student will remain in the class; if denied, the student will be dropped from the class for lack of prerequisite and enrollment fees will be refunded.

References to "successful completion" implies with a grade of 'C' or better. Courses in progress outside the district will not be accepted as prerequisites. Advisories are recommendations only and need not be verified.

Wait List

Once courses with a wait list fill to their maximum capacity, you have the option to add your name to a priority listing in the event drops should occur or the instructor agrees to add late enrollees (at the first class meeting).

Important Wait List Details

1. All corequisites or prerequisites must be met before being placed on a wait list.
2. Once you have added your name to a wait list, you can check your status (i.e. you are now # 2 of 5 students on the list) by going into "Manage My Waitlist" on WebAdvisor. **You should check your status on WebAdvisor frequently** to allow yourself the maximum amount of time to register, in the event permission is granted prior to the start of instruction (includes weekends and holidays).

3. If space becomes available in your wait list course, you will receive notification to your InSite email account that permission has been granted to register. The message will be sent by email or you can access the information by checking "Manage My Wait List". **Wait list notifications will be sent to the student's college email account. Please check it frequently if you are on a wait list. Students may now elect to receive text message notifications - opt in at InSite Portal**

4. Once permission is granted, you will have three (3) calendar days to register in the class via WebAdvisor (or in-person). **After three days, if you have not registered in the class, your name will be removed from the wait list** and the next student on the list will be notified that he/she is eligible to fill the open seat. Once your name is removed from the list, you no longer have priority status.
5. If you are on a wait list at the start of instruction, you must attend the first class meeting to see if there is space available for late enrollment. If you do not attend the first class, you lose your place on the priority listing and another student may be added instead.

If approved, the instructor will give you a unique late-add code. The code must be entered on WebAdvisor by the end of the late registration period. Your registration is not complete until your add code is processed.

Please note: Beginning with the first day of instruction, the option to have your name placed on a wait list is no longer available.

Transfer of Credit

If you have previous college experience and would like to transfer other college credit to LMC, you must request an official college transcript to be sent to the LMC Admissions & Records Office (Note: not required if prior coursework is within the CCCCDC.) Your previous coursework will then be evaluated for prerequisite course information. Students may request an evaluation by submitting a request for Transcript Evaluation form to the Admissions Office in Pittsburg or Brentwood or an evaluation will be completed with submission of a petition for graduation.

Veterans Benefits

Priority registration appointments are available by request to active military personnel and to honorably discharged veterans. Information on veterans benefits is available in the Admissions & Records Office, Room 301 or at www.losmedanos.edu/veterans.

Accuracy and Revisions

Los Medanos College has made every reasonable effort to determine that everything stated in this schedule is accurate. Courses and programs offered, together with other matters contained herein, are subject to change without notice by the administration of Los Medanos College for reasons related to student enrollment, level of financial support, or for any other reason at the discretion of the Contra Costa Community College District and the College. The District and the College further reserve the right to add to, amend or repeal any of their rules, regulations, policies, and procedures consistent with applicable laws. At the time of publication, the fees described in the schedule are accurate. However, at any time, local or state mandated fees may be imposed or increased.

Add and Drop Deadlines For Summer Classes

Add, drop and refund deadlines will vary for summer classes depending upon the number of class meeting days. For specific add dates, consult the course instructor or inquire in the Admissions & Records Office in Pittsburg or Brentwood Center. For refund deadlines, contact the Cashier's Office. In general, deadline dates for summer and other short-term classes are determined as follows:

You may quickly obtain drop dates for your classes by logging into WebAdvisor, click on "My Class Schedule." Next to each course is the last day to drop for a refund, the last day to drop without a 'W' and the last day to drop with a 'W'.

- Last date to add
= 10% of the class meetings
- Last date to drop with a refund
= 10% of the class meetings
- Last date to drop with no 'W' on record
= the day before census*
- Last date to petition for P/NP
= 30% of the class meetings
- Last date to drop with a 'W'
= 75% of the class meetings

*Census day = 20% of the class meetings

Reminder: To receive a refund for a summer course, students must drop the course within 10% of the total class meetings, which in most cases is the first class meeting.

EFFECTIVE FALL 2014

the State began mandating enrollment priorities as follows

- Veterans, Foster Youth, DSPS, EOPS and CalWORKs will receive the first priority
- New students who have completed assessment, orientation and an educational plan will receive a priority registration appointment
- Continuing students will maintain the current registration appointment system
- All categories of students with priority registration status will lose their registration priority if they exceed 100 units or have two consecutive semesters on probation

New Student Workshops



GET STARTED @ LOS MEDANOS COLLEGE

Apply

www.losmedanos.edu/new

Complete Online Orientation

www.losmedanos.edu/lmcorientation

Determine English/math placement

www.losmedanos.edu/assessment/

Attend a New Student Registration Workshop

www.losmedanos.edu/NewStudentWorkshop

Access all steps: www.losmedanos.edu/new

Before attending your workshop:

- Complete Online Orientation.
- Determine your math/English placement
 1. Transcript
 2. Test

All students new to Los Medanos College must view the Online Orientation and attend a New Student Registration Workshop.

What's in it for you?

- Create an education plan for your first semester.
- Register for your classes at the workshop.
- Learn which courses are required to achieve your educational goal.
- Learn about LMC's majors, services and procedures.
- Discuss your math and English placement.
- Have your individual questions answered by a counselor.
- Receive a free LMC Student Handbook.
- May become eligible for priority registration.

Fees and Tuition

Fee Type	Amount	Required
Enrollment Fee	\$46 per unit* (No maximum)	All students**
Non-Resident Tuition	\$254 per unit* (No maximum)	Non-California residents (<i>must be paid in addition to enrollment fee</i>)
Non-U.S. Citizen Tuition	\$254 per unit* (No maximum)	Those non-U.S. citizens who by law cannot establish California residency (<i>must be paid in addition to enrollment fee</i>)
Student Union Fee	\$1 per unit, to a maximum of \$10 per academic year	All students – pays for the construction and maintenance of a student center
Parking Fee Permit***	\$25 for cars \$15 for motorcycles or \$3/day both autos and motorcycles	All vehicles anywhere on campus, including dirt lots, roads, etc., except on weekends and holidays
Transcript Request <i>Rush transcripts are available for an additional fee.</i>	\$5 per copy (first two transcripts in district – free)	All students – Payable with written request or request on WebAdvisor
Enrollment Verification	Free \$5 \$2	Through Webadvisor 24 hours (in person) 3-4 business days (in person)
Returned Check Fee	\$15	All students – Only cash or cashier's checks will be honored for clearing checks returned for insufficient funds. Records are held until the fee is cleared.
Materials Fee	Vary	Some classes may charge additional fees.

*The District reserves the right to change enrollment and nonresident tuition fees, based on state legislation.

**Special admit students (K-12) are exempt from enrollment fees.

***The District reserves the right to change parking fees based on CCCC Board Policy.

**** Students may request a refund of the fee by submitting the Student Activity Fee Refund Request Form before the refund deadline.

PLEASE NOTE: All eligible BOGFW recipients remain responsible for all fees in excess of enrollment fees.

Note: Fees shown are those in effect at the time of publishing and are subject to change*. Fees may be paid in cash, by personal check, VISA, MasterCard, or Discover for the exact amount.

For more information about Financial Aid, see pages 8 & 9 or visit www.losmedanos.edu/financialaid

Student Fee and Enrollment Refunds

Fee refunds for students who withdraw from school or drop classes by the deadline for class add/drop will be automatically calculated at the District Accounting Department. Refund checks for complete or partial withdrawals from school will be processed after the first two weeks of instruction. Refund checks will be mailed to the student address on file in the college Admissions Office. If the student paid by credit card on WebAdvisor, the refund will be processed as a credit to the credit card.

Don't be left behind! If you have a new address, please update your address in WebAdvisor immediately! This needs to be done prior to the time of withdrawal or change of program.

A refund will not be made if the student has other outstanding debts to the college. Refund checks will be issued monthly after the first two weeks of instruction each semester. All refund checks will be made payable to the student whether paid by cash, check, money order, cashier's check or credit card. No refund of the enrollment fee will be made to any student who withdraws from classes after the first two weeks of instruction for a full semester class, or after 10% of the class time for a short-term class. An example, a 10-day course would need to be dropped in just **one day!** And a one-day course would need to be dropped the day before the course.

Students who register and subsequently drop all classes prior to the beginning of the semester may petition for an early refund at the Cashier's Office.

Parking Permit Refunds

Parking permit refunds will be made if the student drops all classes within 10% of the length of summer courses. The parking decal must be returned to the Cashier's Office for a refund. **No parking permit refunds after the refund period is over.**

Financial Aid Enrollment Fee Refunds

If subsequent to paying enrollment fees, a student becomes eligible for financial aid and receives an enrollment fee waiver, the student will automatically be mailed a full refund check according to the same refund processing cycle as enrollment fee refunds.

Enrollment Fee Deferments

If subsequent to paying enrollment fees, a student becomes eligible for an enrollment fee deferment to an outside agency, the student must have the document stating the deferment submitted to the Cashier's Office. The student will then automatically be mailed a refund check of the deferred fees within two weeks after the outside agency has been billed.

Details regarding the refund policy are available from the Cashier's Office or Admissions & Records Office.

Student Debts to the College

Students are expected to clear their financial debts promptly. Students who owe LMC money for tuition or enrollment fees, overdue library books, returned checks, or other debts will not be allowed to use college services (such as registering for classes or obtaining official transcripts) until their debts are paid.

If your debt remains unpaid, Los Medanos College may garnish your California State Tax Return through the State-mandated Chancellor's Office Tax Offset Program (COTOP). In this instance, a 25% administrative fee will be added to your delinquent balance. This balance will be forwarded for collection to the State Franchise Tax Board (FTB). In the event you are owed a State tax refund, win a California Lottery prize,

or have unclaimed property to be distributed to you by the State of California Controller's Office for the upcoming tax year, California State Government Code sections 12419.2, 12419.7, 12419.10, and 12419.11 authorize the Office of the State Controller and the FTB to collect money owed to individuals and redirect these funds to pay the individual's debt owed to the agencies/colleges.



{ SCHOLARSHIPS } = { OPPORTUNITIES }

Make the most of LMC's
— **Scholarship Program!** —

3 GREAT REASONS TO APPLY

- \$\$\$ can help pay for books
- Help pay tuition
- Funds never have to be paid back

Don't delay! Apply today!!!
www.losmedanos.edu/scholarships

>>>> IMPORTANT NOTE <<<<

You will **NOT** be automatically dropped from classes based on non-attendance or non-payment of fees. Failure to drop your course may result in a failing grade and a debt on your record.

All outstanding debts must be paid in full. Unpaid debts will result in a registration and transcript hold on student records.

>>>>>>>><<<<<<<<<<

STUDY ABROAD

Contra Costa Community College District invites you to participate in our study abroad programs.



Study Abroad Office:

(925) 969-2507 or
email studyabroad@dvc.edu

#BestExperienceEver

YOUR DREAMS ARE TOO IMPORTANT to let college pass you by.

All you need to do is ask...

Financial aid is the way many of today's students pay for college. The Office of Financial Aid can help you apply for state and federal grants, work-study programs and enrollment fee waivers.



LOS MEDANOS COLLEGE FINANCIAL AID

Grants are the primary form of financial aid available at LMC.

Grants are "free" money that students obtain by taking classes. Grants do not have to be paid back and are given to qualified students in the form of a check.

All you need to do is ask.

Our Office of Financial Aid can assist you in determining your eligibility for grant programs that best meet your individual needs. Start by signing up for a FSA ID at <https://fsaid.ed.gov>. After obtaining a user account, you can begin filling out your Free Application for Federal Student Aid (FAFSA) online at www.fafsa.ed.gov.

Stop by the Office of Financial Aid.

There are several different types of grants available at Los Medanos College.

FEE WAIVERS

The fee waiver is offered by the California Community College Board of Governors.

It's easy to apply!

FEDERAL PELL GRANTS

Offers up to \$5815 for full-time undergraduate students pursuing a degree or certificate.

FEDERAL SUPPLEMENT EDUCATIONAL OPPORTUNITY GRANT

Offers up to \$1000 for students enrolled at least half time (6 units), and is awarded to those who file by March 2 and have the greatest need.

FEDERAL WORK/STUDY

Offers work on campus in an approved department and receive funding in the form of a monthly payroll check to assist with educational expenses.

CAL GRANTS B AND C

Offers between \$1670 and \$547 respectively for students taking 6 units or more. The application period is between January 1 and March 2. If you plan to attend LMC in the fall, you have a second deadline of September 2.





FINANCIAL ASSISTANCE

What if you can't afford the fees? We can help you!

Come to the Office of Financial Aid and learn about the financial opportunities available to eligible students.

Financial assistance check disbursements for students enrolled at the beginning of the term for semester-length and short term courses will be paid as follows:

You may have remaining funds available for the summer term, depending on how much funds you have used so far from the fall and/or spring semesters. Each student's disbursement amount varies, depending on number of units enrolled, financial need, and remaining funds available. The office of Financial Aid will notify you via email if you are determined eligible for a summer disbursement. Please refer to the 2016-2017 Financial Aid Disbursement Calendar on the Financial Aid website at www.losmedanos.edu/financialaid.

For more information about your status

Visit the college web site at www.losmedanos.edu and click on **InSite/WebAdvisor**. Among others, "**Financial Aid Status By Term/Year**" is available.

Financial Aid Disbursement Options

Students now have options in how they receive their financial aid disbursement:

1. Direct Deposit: Funds can be transferred directly to your existing bank account
2. Money Network Enabled CollegeCash Card: Funds are available the same day school disburses funding.
3. Paper check: A paper check will be mailed to the address on file with the Admissions & Records office. Students generally receive the check within 7-10 business days.

BOGFW



WHAT'S A BOGFW?

A BOGFW, officially called the "Board of Governors Fee Waiver", is a waiver of enrollment fees provided by the State of California for students who have been California residents for more than one year. Students who are required to pay non-resident tuition or do not meet citizenship requirements do not qualify. There are three ways to qualify for a BOGFW. You only need to be eligible for one.

PLAN AHEAD!

Do not wait to apply until you want to register. Processing time for BOGFW A & B is three (3) business days. The BOGFW C can take up to six (6) weeks. We highly recommend that students apply online: www.losmedanos.edu/financialaid/apps.asp to expedite the process. To apply for a BOGFW for summer 2017, please complete the 2017-2018 application.

WHAT HAPPENS IF I RECEIVE A BOGFW?

You will be notified of your BOGFW eligibility by award letter. You may also check your eligibility on WebAdvisor. If you are eligible for a BOGFW A, B, or C, your per-unit enrollment fees are waived, regardless of how many classes you enroll in. All other fees charged (i.e., Student Union and Parking) remain your responsibility to pay. If you have already paid your enrollment fees and qualify for a BOGFW, you will receive a refund of these fees. Refund checks are automatically calculated and mailed to all students. **BOGFW recipients may qualify for discounted parking if BOGFW is applied before purchasing parking.**

You only need to apply once per academic year.

Applications are due no later than the last day of the semester for which you are applying.

BOGFW APPLICATIONS THAT ARE NOT COMPLETE OR ACCURATE WILL NOT BE PROCESSED.

BOGFW recipients may qualify for discounted parking.

BOGFW A: Provide proof of TANF/Cal Works, Supplemental Security Income (SSI), or General Relief benefits you receive. Provide income and household size information by completing section B on the back of the BOGFW application. If you are considered a dependent, you must provide proof of the benefits your parents are receiving.

Acceptable documentation includes:

- Copy of current official agency verification
- Current eligibility letter

BOGFW B: Provide income and household size information by completing section B on the back of the BOGFW application.

BOGFW C: If you don't qualify for BOGFW A or B, you may qualify for BOGFW C by completing a 2017-2018 FAFSA.

Family size	Total Family 2015 Income	Family size	Total Family 2015 Income
1	\$17,820 or less	5	\$42,660 or less
2	\$24,030 or less	6	\$48,870 or less
3	\$30,240 or less	7	\$55,095 or less
4	\$36,450 or less	8	\$61,335 or less

Add \$6,240 for each additional family member

LMC Programs of Study

PROGRAMS OF STUDY	College Skills Certificate	Certificate of Achievement	Associate Degree	PROGRAMS OF STUDY	College Skills Certificate	Certificate of Achievement	Associate Degree
Administration of Justice		•	AS-T*	Drama			
Basic Law Enforcement Academy Intensive		•		Acting			AA
Criminal Investigations		•		Theatre Arts			AA-T*
Criminal Law		•		Electrical/Instrumentation Technology			
Anthropology			AA-T*	Electrical Technology		•	AS
Appliance Service Technology		•	AS	Instrumentation Technology		•	AS
Heating, Ventilation & Air Conditioning Specialist	•			Emergency Medical Services	•		
Electrical Appliance Technician	•			EMS Recertification	•		
Refrigeration Technician	•			Engineering			AS
Art				English			AA-T*
Art History			AA-T*	Fire Technology		•	AS
Fine Arts			AA	Basic Fire Academy	•	•	
Graphic Communications		•	AA	Fire Prevention	•		
Studio Arts			AA-T*	Fire Protection	•		
Automotive Technology		•	AS	History			AA-T*
Air Conditioning Specialist	•			Journalism			AA/AA-T*
Automotive Chassis Specialist	•			Kinesiology			AA-T*
Engine Performance	•			Liberal Arts			
Engine Repair & Machining Specialist	•			Arts and Humanities			AA
Smog Technician Specialist	•			Behavioral Science and Social Science			AA
Transmission Specialist	•			Math and Science			AA
Biology			AS-T*	Management and Supervision		•	AS
Business				Mathematics			AS-T*
Accounting		•	AS	Music			AA/AA-T*
Business Administration			AS-T*	Commercial Music – Business Management		•	
Fundamental Business Skills	•			Nursing			
Small Business Management and Operations		•	AS	Registered			AS
Chemistry			AS-T*	Vocational		•	
Child Development		•	AS-T*	Physics			AS-T*
Assistant Teacher Permit Coursework	•			Process Technology		•	AS
Associate Teacher Permit Coursework	•			Bridge to Advanced Manufacturing	•		
Curriculum in Early Childhood Specialization Certificate	•			Psychology			AA-T*
Specialization – Infant Toddler Care	•			Recording Arts		•	AA
Specialization – School Age Care	•			Recording Arts Level 1	•		
School-Age Development & Education Skill Certificate	•			Recording Arts Level 2	•		
School-Age Associate Teacher	•			Sociology			AA-T*
Specialization Administration of Director Early Childhood Programs	•			Transfer Studies			
Specialization - Special Needs Care & Education	•			CSU GE		•	
Communication Studies			AA-T*	IGETC		•	
Computer Science			AS-T*	Travel Marketing	•	•	AS
Computer Applications Specialist		•		Cruise Specialist	•		
Computer Support Specialist			AS	Home-Based Travel Specialist	•		
Computer Support Specialist (Advanced)		•		Welding Technology		•	AS
Computer Support Specialist (Basic)		•		Welding Pre-Apprenticeship	•		
Computer Science – Core Competencies	•			World Languages			
Foundation	•			American Sign Language	•		
Game Design	•			Cultural Competence in Modern World Language	•		
Networking and Security			AS	Spanish	•		
Networking and Security (Advanced)		•					
Networking and Security (Basic)		•					
Certified PC Repair Technician	•						
Web Design	•						

See the Los Medanos College Catalog for information on LMC program requirements.

*Degrees designed especially for those who plan to transfer to a California State University (CSU) campus.



**NEED information?
Think InSite first!**

- ▶ Access WebAdvisor
- ▶ Check Student Email
- ▶ Get College News

InSite is the College's customized student portal, which provides access to InSite Mail (the official student email system) and WebAdvisor. Check your InSite page and InSite Mail account regularly.

All communications from the College will be delivered to either your InSite Mail or posted on your InSite portal page including:

- Online payment receipts
- Schedule changes
- Notification of Eligibility to Register from the Waitlist
- All communications from faculty
- Urgent messages from the College (emergencies, etc.)
- And much more

Visit

www.4cd.edu/webadvisor/faqs.aspx
for InSite and InSite Mail FAQs.

Important features of InSite Mail

- Students are responsible for reading and responding to official communications sent to their InSite Mail account.
- Never worry about having access to Word again! Edit, compose, and share online documents with Office WebApps.
- Email forwarding to another account recommended.
- Set up instant alerts via text message when important items are delivered to your inbox.
- You'll have a genuine ".edu" email address which adds a professional touch to your resume.

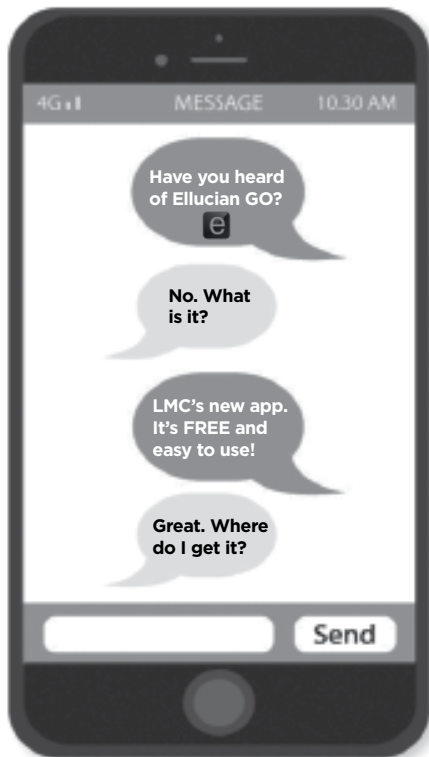


Set up instant alerts via text message.



HOW TO ACTIVATE YOUR ACCOUNT

Log on to InSite portal and click on "Check my InSite Mail" to activate your new email account. Your InSite Mail address is "**your WebAdvisor user name @insite.4cd.edu**".



DOWNLOAD LMC'S FREE APP

EllucianGO

The newest, easiest way to access your:

- Class Schedule
- Education Plan
- Registration Links
- Campus maps
- Canvas
- Grades
- Cancelled Classes
- Manage My Waitlist
- ...and More!



HOW TO REGISTER ONLINE

Who

You may register by online* on WebAdvisor if:

- You are a continuing student from the Summer 2016, Fall 2016 or Spring 2017, or
- You have submitted an application for the Summer 2017 semester.

*Excludes high-school students, who must register and provide forms in person.

When

- Registration online in semester-length and short-term classes is available on or after your registration appointment time and date, up through the day before classes begin. You may register for classes using Student Planning (prior to the beginning of classes) or WebAdvisor. After the start date of the course, you will need to enter a Late Add Code in WebAdvisor to register for the class.

How to register online on WebAdvisor

When you click on InSite Portal/WebAdvisor, you will see blue buttons on the left side. To find out how to access InSite, click on the button that says "Login Instructions". These instructions will demonstrate how to log into the InSite Portal and how to manage your user account.

You First Login

- Update your password
- Provide your **Challenge answers**
- Enroll your **Mobile Phone Using Text or Voice Message**
- Choose your **Cell Phone Message Options**

You will be logged into the InSite Portal

- Click on **Students**
- Click on **Registration**
- Select **My Priority Registration Dates** to confirm when you are eligible to enroll.
- If you know which courses you want, you can use **Express Registration**. You may access a course by entering a section number and term.
- Click on **Search for Sections** or **Search and Register**.
- Select the location, the term and other search criteria to locate classes.

- Register for **Previously Selected Sections** page (this is like using a shopping cart to select your classes), choose an action (register) for each course under the preferred sections list and click on the **Submit** button. (Please note: If the course is filled, a red message will appear at the top of this screen.)
- If a course is filled you may choose to put yourself on the waitlist (see waitlist instructions).
- If the course does not have a waitlist or the waitlist is filled, you will need to check back frequently for space in the class.
- Click on my class schedule to print a copy for your records.
- Under the Main menu, click on **Student Account Information**, then click on **Make a Payment** (by credit card) or send a check to the Cashier's Office, Los Medanos College, 2700 E. Leland Road, Pittsburg, CA 94565

On the InSite Portal you are able to:

- Check your student email
- See your scheduled classes
- Use student planning to view your progress toward a degree or certificate and plan your courses

Fee Payment

- Fees may be paid by check or credit card (VISA, MasterCard or Discover).
- If you pay by check, mail or take your check to the Cashier's Office. Write your ID number on the check.

Note Regarding Financial Assistance

If you are receiving financial assistance through the college, your fee waiver must be processed before you register for classes.

Register using the Mobile App Ellucian Go

- Locate the Ellucian Go app in the **Apple "App Store"** or **Google "Play Store"**.
- Download and install Ellucian Go.
- Launch Ellucian Go. **Note:** Apple devices will prompt you to allow Notifications. Click OK to allow and continue.
- Choose your college from the list, or type your college name into the search box.
- Installation is complete after you select your college. You will be prompted to enter your InSite Portal username and password to access items on the menu that require you to log in.

Important Note: You will NOT be automatically dropped from classes based on non-attendance or nonpayment of fees. Failure to drop your course may result in a failing grade and a debt on your record.

All outstanding debts must be paid in full. Unpaid debts will result in a registration hold on student records.

COMO REGISTRARSE POR INTERNET

Quién

Puede registrarse por Internet* en su página de "WebAdvisor" si:

- Actualmente está registrado como estudiante continuo desde el semestre de Verano 2016, Otoño 2016, u Primavera 2017, o
- Ha sometido una solicitud para el nuevo semestre de Verano 2017.

*Excluye a estudiantes de nivel secundaria (high school), los cuales deben presentar sus formas en persona.

Cuándo

- Podrá registrarse por Internet para cursos semestrales o de periodos cortos a partir del día y horario de su cita de registro, hasta el día anterior del comienzo de clases. Puede registrarse para cursos antes del comienzo de las clases utilizando "Student Planning" (El Plan de Estudiante) o por WebAdvisor. Después del comienzo de clases, necesitará un Código de Admisión Tardía o "Late Add Code" para poder registrarse para sus cursos.

Como registrarse por Internet en WebAdvisor

- De la página principal (www.losmedanos.edu), haga clic en InSite Portal/WebAdvisor. Verá botones azules en el lado izquierdo de la página. Seleccione el botón que dice "Logon Instructions." A través de este botón, podrá ver las instrucciones para iniciar su sesión al InSite Portal y como poder manejar su cuenta de estudiante.

Primero inicie su cuenta estudiantil

- Inicie un nueva contraseña
- Proporcione sus preguntas de seguridad
- Introduzca su teléfono móvil usando texto y mensaje de voz
- Escoja las opciones para recibir mensajes por celular

Iniciar su sesión en InSite Portal

- Haga clic en "Students" (Estudiantes)
- Haga clic en "Registration" (Registación)
- Elija "My Priority Registration Dates" (Mi Fecha de Registración de **Prioridad**) para poder ver y confirmar cuando será elegible para su registración.
- Si ya sabe los códigos de sus clases, puede utilizar "**Express Registration**" (Registación Express). Introduzca los números del código del curso y seleccione el semestre apropiado.
- Si necesita buscar las clases, dirjase a buscar los códigos donde dice "**Search for Sections.**"
- Elija el colegio donde quiere asistir, el semestre, el año, e información y datos requeridos.
- Para registrarse para **secciones que ya había seleccionado**, elija "Previously Selected Sections." (Esto es como un carrito de compra que contiene las clases que seleccionó previamente pero no han sido registradas.) Para registrarse, escoja la acción "Register" para cada una de las clases en "Preferred Sections List" y seleccione "Submit" para completar su transacción. (Nota: si el curso está lleno, un mensaje en color rojo aparecerá en la parte de arriba de la pantalla.)

- Si el curso está lleno, puede agregarse a la lista de espera llamada "Waitlist." (Por favor mire las instrucciones de la lista de espera.)
- Si la clase no tiene lista de espera o está llena, tendrá que revisarla frecuentemente para chequear si se abrió cupo.
- Haga clic en "My Class Schedule" (Mi lista de clases) para imprimir una copia de su horario de clases.
- Dirjase al "Main Menu" (Menu Principal) y elija "**Student Account Information**" (Información de la Cuenta de Estudiante), y haga clic en "**Make a Payment**" (Haga Pago) para pagar su cuenta. Puede pagar con tarjeta de crédito o puede enviar un cheque por correo a: Cashier's Office, Los Medanos College, 2700 East Leland Road, Pittsburg, CA 94565.

En su Insite Portal puedes:

- Ver su correo electrónico
- Mirar su horario de clases
- Usar el plan de estudios para ver su progreso hacia su título de asociado o certificado y planificar sus cursos.

Pago de Cuotas

- Las cuotas pueden ser pagadas con cheque o tarjeta de crédito (Visa, MasterCard o Discover.)
- Si paga con cheque, envíelo por correo o en persona a la Oficina del Cajero (Cashier's Office). Escriba su número estudiantil en el cheque.

Notas Sobre Ayuda Financiera

Si recibe ayuda financiera por medio del colegio, sus tramites de ayuda financiera deben ser procesados antes de registrarse para cursos.

Nota Importante: NO se le dará de baja automáticamente por no asistir a sus clases o por no haber pagado los cargos. Usted es responsable por darle de baja a sus clases. No darse de baja puede resultar en calificaciones no aprobatorias y una deuda en su cuenta estudiantil.

Todos los cargos deben ser pagados en su totalidad. La falta de pago de estos cargos se penalizará con una restricción sobre su cuenta estudiantil.

Registación usando la Aplicación Móvil Ellucian Go

- Localiza la aplicación Ellucian GO en **Apple "App Store"** o en **Google "Play Store"**.
- Instala o baja la aplicación Ellucian Go.
- **Nota:** Haz clic en Ok para permitir y continuar con las notificaciones para aparatos de Apple.
- En la lista selecciona tu colegio, o escribe el nombre de tu colegio en la caja de búsqueda "Search box".
- La instalación estará completada una vez que selecciones tu colegio. Para entrar en tu Insite Portal tendrás que poner tu nombre de usuario y contraseña.

Nota Importante: NO se le dará de baja automáticamente por no asistir a sus clases o por no haber pagado. Sin embargo, No darse de baja puede resultar en calificaciones no aprobatorias y una deuda en su currículo.

Todos los cargos deben ser pagados en su totalidad. Cargos no pagados resultara en restricción de registros y prohibición a su cuenta y currículo de estudiante.

Online Courses - Summer Session

New to online classes? Not that experienced with computers and the internet?

We highly recommend going through these two steps by going to: www.losmedanos.edu/onlineclasses

1. a. Are you ready for an online class?
Take a quiz to see if an online course fits your needs. Check to make sure you have the computer skills you'll need to succeed.

b. Is your computer ready?
Make sure your computer and internet connection are up to speed.

2. Some things to know about online classes at LMC
a. Get to your online classroom at www.losmedanos.edu/onlineclasses.
b. Your username and initial password are the same as for WebAdvisor.

c. Online courses begin the first day of class. Your online classroom will not be accessible before that date.
d. Check to see if the instructor for your class has any special instructions.

Course	Title	Section	Dates	Instructor	Instructor's Email
BUS-035A	Microsoft Word	0065	6/12-7/20	Knauer, C	cknauer@losmedanos.edu
BUS-035B	Microsoft Excel	5643	6/12-7/20	Beckham, S	sbeckham@losmedanos.edu
BUS-035C	Microsoft Powerpoint	5644	6/12-7/20	Knauer, C	cknauer@losmedanos.edu
BUS-109	Introduction to Business	0111	6/12-7/20	Wilkins, P	pwilkins@losmedanos.edu
BUS-160	Personal Finance	0112	6/12-7/20	Wilkins, P	pwilkins@losmedanos.edu
CHDEV-010	Child Growth and Development	0040	6/12-8/3	Jones, E	ejones@losmedanos.edu
COMSC-040	Introduction to Computer and Business Information Systems	0050	6/12-7/20	Stanton, K	kstanton@losmedanos.edu
COMSC-040	Introduction to Computer and Business Information Systems	0078	6/12-7/20	Stanton, K	kstanton@losmedanos.edu
COMSC-040	Introduction to Computer and Business Information Systems	0079	6/12-7/20	Staff, L	
COMSC-121	Computer Forensics Investigations and Analysis	0023	6/12-8/3	Jones, S	sajones@losmedanos.edu
COUNS-030	Orientation to College	0072	6/12-7/6	Ramirez, S	sramirez@losmedanos.edu
DRAMA-015	Multicultural Perspectives within Theatre	0246	6/12-7/20	Perry, J	jperry-folino@losmedanos.edu
DRAMA-030	Chicano/a Mexican American Cinema: A Critical Analysis	0008	6/12-7/20	Perry, J	jperry-folino@losmedanos.edu
DRAMA-070	Film as an International Art Form	0004	6/12-7/20	Perry, J	jperry-folino@losmedanos.edu
ENGL-100	College Composition	0073	6/12-7/20	Hiltbrand, J	jhiltbrand@losmedanos.edu
ENGL-100	College Composition	0074	6/12-7/20	Noel, J	jnoel@losmedanos.edu
ENGL-100	College Composition	0075	6/12-7/20	Zhu, Y	yzhu@losmedanos.edu
ENGL-221	Advanced Composition and Critical Thinking	0240	6/12-7/20	Hiltbrand, J	jhiltbrand@losmedanos.edu
ENGL-230	Thinking and Writing Critically about Literature	0048	6/12-7/19	Hiltbrand, J	jhiltbrand@losmedanos.edu
HIST-029	United States History until 1865	0087	6/12-7/20	Bearden, J	jbearden@losmedanos.edu
HIST-030	United States History from 1865	0091	6/12-7/20	Bearden, J	jbearden@losmedanos.edu
MATH-030	Intermediate Algebra	9518	6/12-7/20	Stricker, M	mstricker@losmedanos.edu
MATH-040	Precalculus	0098	6/12-7/20	Cohen, J	jcohen@losmedanos.edu
MUSIC-010	Music Literature	0006	6/12-7/20	Chuah, C	cchuah@losmedanos.edu
MUSIC-012	Popular Music in American Culture	0010	6/12-7/20	Zilber, M	mzilber@losmedanos.edu
POLSC-010	Introduction to American Government: Institutions and Ideals	0133	6/12-7/20	Duwe, M	mduwe@losmedanos.edu
SPAN-051	Elementary Spanish II	0270	6/12-8/3	Huffman, L	lhuffman@losmedanos.edu

Off Campus Courses - Summer Session

CONTRA COSTA COUNTY OFFICE OF THE SHERIFF

340 Marina Blvd. Pittsburg

ADJUS-005 **Basic Law Enforcement Academy - Intensive**

Brentwood Center Courses - Summer Session

Course	Section	Title	Days	Times	Room	Length
ANTHR-006	9512	Cultural Anthropology	MTWTH	8:00-10:05am	BRT-6	6/12-7/20
ANTHR-006	9545	Cultural Anthropology	MTWTH	10:15-12:20pm	BRT-4	6/12-7/20
ASTRO-010	9500	Introduction to Astronomy	MTWTH	12:30-2:35pm	BRT-6	6/12-7/20
BIOSC-005	9508	Biology of Health	MTWTH	8:30-11:20am	BRT-5	6/12-7/19
BIOSC-010	9538	General Biology	MTWTH	8:00-10:05am	BRT-12	6/12-7/20
			MTW	10:15-2:15pm	BRT-18	
BIOSC-030	9542	Introduction to Anatomy and Physiology	MTWTH	5:30-7:35pm	BRT-11	6/12-7/20
			MTWTH	7:45-9:50pm	BRT-18	
COMSC-040	9522	Introduction to Computer and Business Information Systems	MTWTH	12:30-2:35pm	BRT-10	6/12-7/20
DRAMA-015	9525	Multicultural Perspectives within Theatre	MTW	3:30-6:20pm	BRT-6	6/12-7/19
DRAMA-015	9533	Multicultural Perspectives within Theatre	MTW	8:30-11:20am	BRT-16	6/12-7/19
ECON-005	9535	Economic History of the United States	MTWTH	12:30-2:35pm	BRT-4	6/12-7/20
ENGL-100	9530	College Composition	MTW	11:30-2:20pm	BRT-14	6/12-7/19
ENGL-100	9505	College Composition	MTW	6:30-9:20pm	BRT-14	6/12-7/19
ENGL-220	9520	Critical Analysis and Inquiry	MTW	12:30-3:20pm	BRT-12	6/12-7/19
ENGL-221	9534	Advanced Composition and Critical Thinking	MTW	11:30-2:20pm	BRT-16	6/12-7/19
HIST-029	9502	United States History until 1865	MTWTH	10:15-12:20pm	BRT-12	6/12-7/20
MATH-012	9539	Prealgebra	MTWTH	7:00-9:50pm	BRT-8	6/12-7/20
MATH-025	9515	Elementary Algebra	MTWTH	8:00-11:30am	BRT-7	6/12-7/20
MATH-026	9516	Plane Geometry	MTW	3:30-6:20pm	BRT-8	6/12-7/19
MATH-030	9517	Intermediate Algebra	MTWTH	8:30-11:20am	BRT-11	6/12-7/20
MATH-034	9519	Introduction to Statistics	MTWTH	8:30-11:20am	BRT-10	6/12-7/20
MATH-034	9528	Introduction to Statistics	MTWTH	3:30-6:20pm	BRT-14	6/12-7/20
MATH-034	9529	Introduction to Statistics	MTWTH	7:00-9:50pm	BRT-6	6/12-7/20
MATH-040	9521	Precalculus	MTWTH	8:30-11:20am	BRT-8	6/12-7/20
MATH-040	9524	Precalculus	TH	6:30-9:00pm	BRT-14	6/12-7/20
MUSIC-010	9536	Music Literature	MTW	8:30-11:20am	BRT-1	6/12-7/19
MUSIC-015	9540	Basic Music	MTW	11:30-2:20pm	BRT-11	6/12-7/19
NUTRI-055	9507	Introduction to Nutrition	MTWTH	3:30-5:35pm	BRT-16	6/12-7/20
PHIL-100	9531	Introduction to Philosophy	MTWTH	8:00-10:05am	BRT-14	6/12-7/20
POLSC-010	9537	Introduction to American Government: Institutions and Ideals	MTWTH	10:15-12:20pm	BRT-6	6/12-7/20
PSYCH-010	9513	Individual and Social Processes	MTWTH	8:00-10:05am	BRT-3	6/12-7/20
PSYCH-011	9523	General Psychology	MTW	3:30-6:20pm	BRT-12	6/12-7/19
SIGN-050	9544	Elementary American Sign Language I	MTWTH	3:00-5:50pm	BRT-10	6/12-8/3
SOCIO-015	9514	Introduction to Sociology	MTW	3:30-6:20pm	BRT-5	6/12-7/19
SPAN-044	9546	Conversational Spanish I	MTW	11:30-2:20pm	BRT-3	6/12-7/19
SPCH-110	9509	Speech Communication	MTWTH	10:15-12:20pm	BRT-2	6/12-7/20
SPCH-110	9511	Speech Communication	MTWTH	3:00-5:05pm	BRT-2	6/12-7/20
SPCH-110	9532	Speech Communication	MTWTH	8:00-10:05am	BRT-2	6/12-7/20

STUDENT SERVICES AVAILABLE

*Counseling • Admissions & Records • Assessment
Disabled Students Programs & Services
Financial Aid • Reserve Textbook Library
Transfer Workshops*

Please call or check website for hours.

BRENTWOOD CENTER

101A Sand Creek Road
Brentwood, CA 94513
(925) 513-1625

www.losmedanos.edu/brentwood

How to Read This Schedule

SEC	DAYS	HOURS	ROOM	INSTRUCTOR	DATES
-----	------	-------	------	------------	-------

BIOLOGICAL SCIENCE

BIOOSC-020 Principles of Biology: Cellular Processes - 5 Units
PREREQUISITE: MATH-029, MATH-030 or equivalent
ADVISORY: BIOOSC-010, High school biology, chemistry
 LMC Degree: DA
 Transfer: UC; CSU Gen. Ed. Area B2, B3; IGETC Area 5B

As an integrated study of life forms, primarily of plants and animals, this course focuses on the cellular structures and physiology of these life forms. Laboratory experiences will supplement lecture material. Required for biological science majors. LR

0832	MW	8:30-10:50am	SC1-136	Rickman, J	Semester
	MW	11:00-12:50pm	SC1-130		

Brentwood Center
 9643 TTH 1:00-2:20pm BRT-7 Staff, L Semester
 TTH 2:30-5:20pm BRT-LAB

COMPUTER SCIENCE

COMSC-012 Introduction to Network Security - 2 Units
ADVISORY: Eligibility for ENGL-100

Due to the number of attacks, hacks, and viruses, computer security should be the number one concern for computer users today. This course provides an introduction to Internet Security issues, including hacking, firewalls, and encryption. SC

0884	ONLINE	Smith, C
------	--------	----------

10/17-12/16

+ 3 hours by arrangement each week

- Course number, course title, & number of units
- Prerequisites are required courses that must be completed prior to enrollment.
- Advisories are recommended courses to take prior to enrollment in a specific course
- LMC DEGREE: DA means that this course is LMC degree applicable.
- The TRANSFER area tells you what areas of CSU transfer this course satisfies.
- Section number needed for enrollment
- Days of the week the course is taught—M=Monday, T=Tuesday, W=Wednesday, TH=Thursday, F=Friday, S=Saturday, SU=Sunday
- Time the course is taught, note that some courses have more than one start and stop time.
- Room where the course is taught; see map inside back cover for location.

CC 2 - 257 (BRT=Brentwood Center)
building level room #

BRT - Brentwood Center	MA - Math Building
CC - College Complex	MU - Music Building
CO - CORE Building	PS - Public Safety
CS - Child Study Center	PE - Physical Education Complex
EL - ETEC Lab	SC - Science
GYM - Gymnasium	SS - Student Services Building
LIB - Library Building	

- SC- Student choice; credit/no credit option, by petition
- Name of instructor
- Online Course
- Additional hours or lab time are required.
- Start and stop dates of course if different from normal semester length courses.

DAILY CLASS CANCELLATION NOTIFICATION

In an effort to assist our students, we post daily class cancellation notices.

We list class cancellations as they are submitted by the instructors so **you may need to check this site frequently.**

Bookmark the webpage link for easy access:
www.losmedanos.edu/classcancel

While we will make every effort to keep this information up-to-date please understand that **not all absences are reported in a timely manner** so some notices will be posted close to, or occasionally after a class start time. **We will continue to post class cancellation notices on the classroom door(s).**

Students can receive text notifications of daily class cancellations directly to their mobile device. Log into your InSite account, click on Cell Phone Message Options and select "Enrollment Information."



Use this QR code to access the class cancellation link using your smart phone.

SEC DAYS HOURS ROOM INSTRUCTOR DATES

SEC DAYS HOURS ROOM INSTRUCTOR DATES

ADMINISTRATION OF JUSTICE ACADEMY

ADJUS-005 Basic Law Enforcement Academy - Intensive - 25 Units

PREREQUISITE: Students are required to: 1) complete an academy application, 2) have a high school diploma or GED, 3) be at least 18 years old, 4), have a valid driver's license, 5) show proof of vehicle insurance at the first class meeting, 6) supply a statement from a physician indicating his/her ability to engage in strenuous physical activity, 7) obtain clearance with the Department of Justice and, 8) sign a Felony Disclaimer.

ADVISORY: Eligibility for ENGL-100

LMC Degree: DA

Transfer: CSU

Are you considering a challenging career in law enforcement? The Basic Law Enforcement Academy prepares you mentally and physically for an entry-level position with a California Law Enforcement Agency. The Academy meets the requirements of basic certification by the Commission on Peace Officer Standards and Training (P.O.S.T.). This highly-disciplined fundamental course features curriculum, guidelines, and assessments that cover criminal law, evidence procedure, investigation, firearms, defensive tactics, use of chemical agents, physical training, and other related police subjects. Interested students must contact the Office of the Sheriff, Contra Costa County, Law Enforcement Training Center, 340 Marina Blvd., Pittsburg, CA by calling (925) 427-8238 to register for the Academy. Mandatory materials fee of \$4,385 is due on first day of instruction. LR

Off-Campus Class

0150 MTWTFH 7:30-3:20pm SITE Zamolo, C 1/30-7/28

AIR CONDITIONING/REFRIGERATION

ACREF-045 Basic Heating and Cooling Technology - 2 Units

ADVISORY: Prior or concurrent enrollment in: APPLI-023, 024, 025 or 026

LMC Degree: DA

Transfer: CSU

Are you seeking a career working with technology and electro-mechanics? Do you like to work independently and find satisfaction in helping people? Try this introductory course in Heating Ventilation Air Conditioning that is part of the Appliance and HVAC certificate program. It will provide the basic foundation in HVAC you need to work in the appliance repair field. The course provides refrigeration theory, electrical circuitry, installation, troubleshooting, hands on practice working on heating and air conditioning systems. You will also learn related information on job safety, shop practices, repair orders, computer information, maintenance, and service techniques. The course prepares you to take the optional Federal EPA certification test prepared by the ESCO Institute (Exam fee is \$50). SC

4203 MTW 6:00-9:50pm CC3-505 Winckler, D 6/5-7/12

ANTHROPOLOGY

ANTHR-006 Cultural Anthropology - 3 Units

ADVISORY: ENGL-100

LMC Degree: ADR: Social and Behavioral Sciences; DA

Transfer: UC; CSU Gen. Ed. Area D; IGETC Area 4A

Has anyone ever stepped in your space and face? Is that appropriate? It may be depending on the culture you are from. In this class, you will learn about the beliefs, values, behaviors, and religions of the various cultures around the world as well as engage in real cultural anthropological fieldwork. Provides exposure to modern societies and vanishing cultures. SC

Brentwood Center

9512 MTWTH 8:00-10:05am BRT-6 Padilla-Wilson, L 6/12-7/20

9545 MTWTH 10:15-12:20pm BRT-4 Padilla-Wilson, L 6/12-7/20

ART / GRAPHIC COMMUNICATIONS

ART-005 Visual Arts - 3 Units

ADVISORY: Eligibility for ENGL-100

LMC Degree: ADR: Arts and Humanities; DA

Transfer: UC; CSU Gen. Ed. Area C1; IGETC Area 3A

Are you interested in developing your own creative voice while learning about visual art? Do you ever wonder about the art shown in museums? Would you like to know more about how artists think critically and creatively, and apply that to your own projects? Do you like learning about how things are crafted, and would you like to try out a process for one self-directed project such as making a painting or a ceramic sculpture? Then this class is for you! LR

0017 MTW 3:30-6:20pm CC2-221 Renteria, S 6/12-7/19

ART-038 Introduction to Printmaking - 3 Units

ADVISORY: ART-010 or equivalent

LMC Degree: DA

Transfer: CSU

How were books made? What is a lithograph? What is a silkscreened poster? This course is designed to expose students to the realm of print, its historical impact in religion, politics, graphic design, and socio-political activists. Topics such as stencil cave paintings to Banksy's art interventions, what the letterpress is to the world wide web, the CMYK litho process to inkjet printing are just some of the areas covered in this course. Students will attain exposure to the tools, methods, and materials for making artworks while developing skills in creative problem solving. LR

0016 MTWTH 8:00-12:20pm CC3-309 Sanchez, E 6/12-7/20

ADMINISTRATION OF JUSTICE

ADJUS-110 Introduction to Criminal Justice - 3 Units

ADVISORY: Eligibility for ENGL-100

LMC Degree: ADR: Social and Behavioral Sciences; DA

Transfer: UC; CSU Gen. Ed. Area D; IGETC Area 4H, 4J

Do you ever wonder about our justice system? Why are some people charged with crimes and others aren't? This course is a study of the complex workings of the criminal justice system which includes law enforcement, the court system, and corrections. Roles and expectations of the criminal justice system and society, crime causations, punishments and rehabilitation, ethics, educations, and training for the various careers will be analyzed. If you are looking for a career in the field of criminal justice, this course is a "must have" so that you can understand how it all fits together. This is the foundation course for a degree in criminal justice and fulfills a general education requirement. LR

0148 MTW 6:30-9:20pm CO-103 Hailey, A 6/12-7/19

ADJUS-160 Community & the Justice System - 3 Units

ADVISORY: ADJUS-110; eligibility for ENGL-100

LMC Degree: ADR: Social and Behavioral Sciences; Ethnic/Multicultural Studies; DA

Transfer: UC, CSU Gen. Ed. Area D; C-ID AJ 160

Why do cultures play such an important part in the criminal justice system? Find out why! You will examine the ethical and legal issues, learn how to identify problems and participate in resolving conflicts involving ethnicity, culture, age, and sexual orientation in the context of the disciplines of the criminal justice system (law enforcement, the court system, and corrections). Criminal problems which are specific to different cultures are examined and problem solving/conflict resolution techniques are practiced and analyzed for effectiveness. Criminal justice hiring practices are also defined and examined in relationship to diversity issues. SC

0419 MTW 3:30-6:20pm CO-102 Hailey, A 6/12-7/19

ASTRONOMY

SEC	DAYS	HOURS	ROOM	INSTRUCTOR	DATES
ART-064	Introduction to Ceramics Through the Pottery Wheel - 3 Units				
<i>ADVISORY: ART-011; eligibility for ENGL-095</i>					
<i>LMC Degree: DA</i>					
<i>Transfer: UC, CSU</i>					
Try out your skills in making ceramic vessels as you learn about pottery wheel techniques, firing, and glazing your work. You will research and learn about and create various functional and sculptural forms, and learn to integrate glazing or other surface treatments with those forms. Learn and share your creative vision in clay! Students will purchase clay and tools; while the price of clay fluctuates, \$100.00 will likely be more than adequate to cover such costs for the semester. "An optional material fee may be applied." SC					
0020	MTW	8:30-12:50pm	CC3-317	Bassett, I	6/12-8/2

ART-065 Intermediate Ceramics Through the Pottery Wheel - 3 Units

ADVISORY: ART-011 and ART-064; eligibility for ENGL-095

LMC Degree: DA

Transfer: UC, CSU

Improve your skills in making ceramics as you develop your pottery wheel, firing, and glazing techniques. You will research and learn about and create various functional and sculptural forms, and develop your kiln firing and glaze mixing knowledge. Develop and share your creative vision in clay! Students will purchase clay and tools; while the price of clay fluctuates, \$100.00 will likely be more than adequate to cover such costs for the semester. "An optional material fee may be applied." SC

0029	MTW	8:30-12:50pm	CC3-317	Bassett, I	6/12-8/2
------	-----	--------------	---------	------------	----------

ASTRONOMY

ASTRO-010 Introduction to Astronomy - 3 Units

ADVISORY: Eligibility for ENGL-100

LMC Degree: ADR: Natural Sciences; DA

Transfer: UC; CSU Gen. Ed. Area B1; IGETC Area 5A

Do constellations, black holes, and the expansion of the Universe sound interesting? Join us as we survey the world's oldest science with a study of the objects and phenomena visible to astronomers. Topics will include the Moon, planets, stars, galaxies, and the Universe using hands-on, in-class activities and the college planetarium for Pittsburg sections. LR

0964	MTWTH	8:00-10:05am	CC2-220	Fuller Innes, A	6/12-7/20
<i>Students enrolled in this section are expected to use computers for a portion of their coursework.</i>					
0967	MTWTH	10:15-12:20pm	CC2-220	Fuller Innes, A	6/12-7/20
<i>Students enrolled in this section are expected to use computers for a portion of their coursework.</i>					

Brentwood Center

9500	MTWTH	12:30-2:35pm	BRT-6	Wasiak, F	6/12-7/20
<i>Students enrolled in this section are expected to use computers for a portion of their coursework.</i>					

ATHLETICS

ATH-006 Fitness for Athletic Competition - 1 Unit

ADVISORY: High school athletic experience

LMC Degree: DA

Transfer: UC, CSU

This course will prepare the prospective athlete for competition at an advanced level. Introduction to the elements, understanding, and knowledge of physical training will include endurance running, interval sprinting, weight training and plyometric training to improve one's level of fitness for the upcoming athletic season. SC

0066	MTW	11:30-2:20pm	BB-FIELD	D'Albora, A	6/12-7/19
0064	MTW	11:30-2:20pm	FB-FIELD	Sullivan, Z	6/12-7/19
0067	MTW	11:30-2:20pm	GYM	Panzella, L	6/12-7/19
0062	MTW	3:30-6:20pm	SB-FIELD	Rognlien, T	6/12-7/19
0063	MTW	3:30-6:20pm	GYM	Villegas, R	6/12-7/19

ATH-027 Offensive Football Skills and Conditioning - 1 Unit

ADVISORY: Designed for intercollegiate football participants

LMC Degree: DA

Transfer: UC, CSU

Are you on the LMC football team or would like to improve you offensive skill? This course focuses on skill areas such blocking, catching, passing, and route running. SC

0058	MTWTH	3:30-4:00pm	SC2-227	Shipe, C	6/12-7/20
	MTWTH	4:10-5:35pm	FB-FIELD		

ATH-028 Defensive Football Skills and Conditioning - 1 Unit

ADVISORY: Designed for intercollegiate football participants

LMC Degree: DA

Transfer: UC, CSU

Are you on the LMC football team or would like to improve you defensive skill? This course focuses on skill areas such as block destruction, turnovers, tackling, and techniques specific to a defensive position will be covered. SC

0059	MTWTH	3:30-4:00pm	SC1-129	Foreman, D	6/12-7/20
	MTWTH	4:10-5:35pm	FB-FIELD		

ATH-170 Occupational Work Experience Education in Athletics - 1-4 Units

PREREQUISITE: Approved online application

ADVISORY: Eligibility for ENGL-095

LMC Degree: DA

Transfer: CSU

Earn college credit while you learn on-the-job! For students whose current employment is related to their major. Students must be employed or formally volunteer, complete learning objectives, and work 75 paid hours or 60 volunteer hours for each unit of credit. SC

0301				D'Albora, A	6/12-7/20
------	--	--	--	-------------	-----------

Note: Students must submit an online Work Experience application and attend a mandatory Orientation. Go to www.losmedanos.edu/cwee for information.

SEC	DAYS	HOURS	ROOM	INSTRUCTOR	DATES
-----	------	-------	------	------------	-------

AUTOMOTIVE TECHNOLOGY

AUTO-045 Automotive Laboratory Practice - 1.5 Units

LMC Degree: DA

Transfer: CSU

Have you gone for a job interview and been turned down because of lack of work experience? Then, this class is for you. Register in this course for additional automotive lab practice. Focus on areas and projects determined in collaboration with the instructor, based on your abilities. This will give you valuable hands-on-work experience, for job placement or ASE examination work experience requirement. P/NP

0258	MTW	6:00-9:50pm	CC3-512	Dearman, J	6/5-7/12
------	-----	-------------	---------	------------	----------

AUTO-047 Automotive Heating and Air Conditioning - 3 Units

ADVISORY: Eligibility for ENGL-095

LMC Degree: DA

Transfer: CSU

This course will provide you with the knowledge and skills necessary to repair and diagnose common automotive heating and air conditioning systems. Gain hands on experience retrofitting R12 to R134a systems. This course prepares you to take the federal exam for a refrigerant handling license and the ASE A7 examination. SC

0250	MTW	12:00-1:50pm	CC3-512	Dearman, J	6/5-7/12
	MTW	2:00-4:50pm	CC3-512A		

BIOLOGICAL SCIENCE

BIOSC-005 Biology of Health - 3 Units

LMC Degree: ADR: Natural Sciences; DA

Transfer: UC; CSU Gen. Ed. Area E

Have you ever wondered how your heart helps to pump blood throughout your body? Or why you are more likely to get sick when you are stressed? Or what makes up a cell? This course will provide answers to all of these questions (and more)! The course is an opportunity for non-science majors to gain a greater understanding of how the human body functions and how biomedical science addresses the needs of human health and disease. The course will introduce students to the cell and how it functions, how tissues and organs function in the body, and how diseases affect normal body function. In addition to weekly lectures, there will be weekly mini-lab sessions for hands on application of concepts. This course fulfills the natural science requirement for the LMC AA degree. Also applies for transfer to CSU campuses in area E. LR

4348	MTW	11:30-2:20pm	SC1-129	Bouchard, J	6/12-7/19
	MTW	2:30-3:20pm	SC1-103		

Brentwood Center

9508	MTWTH	8:30-11:20am	BRT-5	Ball, W	6/12-7/19
------	-------	--------------	-------	---------	-----------

BIOSC-010 General Biology - 4 Units

ADVISORY: MATH-012 or higher; Eligibility for ENGL-100

LMC Degree: ADR: Natural Sciences; DA

Transfer: UC; CSU Gen. Ed. Area B2, B3; IGETC Area 5B, 5C

The student will discover the elegance of nature while examining the basic structural and functional components of living organisms. This course includes both lecture and lab activities provided in a modern science teaching facility. This course meets the General Education Requirement for Lab Science. LR

4351	MTW	8:30-11:20am	SC1-129	Pasaoglu, T	6/12-7/19
	MTW	11:30-3:20pm	SC1-126		
0039	MTW	2:30-5:20pm	SC1-132	Lewis, M	6/12-7/19
	MTW	5:30-9:20pm	SC1-126		

Brentwood Center

9538	MTWTH	8:00-10:05am	BRT-12	Smith, M	6/12-7/20
	MTW	10:15-2:15pm	BRT-18		

SEC	DAYS	HOURS	ROOM	INSTRUCTOR	DATES
-----	------	-------	------	------------	-------

BIOSC-030 Introduction to Anatomy and Physiology - 4 Units

LMC Degree: DA

Transfer: UC, CSU

This course is designed for students who have a desire to begin the exciting process of discovering how the human body works. Those interested in an introductory level course in human anatomy and physiology to prepare them for the more comprehensive BIOSC-040 and BIOSC-045 should find this class helpful. The course is also required for many LVN, Paramedic and Firefighter Programs. The laboratory will combine simple physiological experiments and demonstrations with study of anatomical models and preserved organs. LR

0220	MTWTH	10:15-12:20pm	SC1-102	Hanks, R	6/20-7/20
	MTW	12:30-3:20pm	SC1-133		

Brentwood Center

9542	MTWTH	5:30-7:35pm	BRT-11	Kenrick, M	6/12-7/20
	MTWTH	7:45-9:50pm	BRT-18		

BUSINESS

BUS-035A Microsoft Word - 1.5 Units

ADVISORY: Eligibility for ENGL-100

LMC Degree: DA

Transfer: CSU

Do you have the word processing skills that today's employers require? Are you struggling with creating and formatting your papers, reports, or other personal documents? This is a skills/performance based class that will give you the opportunity to explore the basic and intermediate features of Microsoft Word. Learn how to create, edit, format, and print documents typically used in a job or other professional environments. This online course requires access to a Windows-based PC running Windows 7 or 8, A Broadband Internet connection of 128 KBPS (minimum), and MS Word 2013. MAC-Based computers and software are not compatible with this course. This class is either a required course or an elective for many degrees and certificates in Business. SC

Online Course

0065	ONLINE	Knauer, C	6/12-7/20
------	--------	-----------	-----------

This is an ONLINE section for 7.5 hours each week. Email questions to cknauer@losmedanos.edu

BUS-035B Microsoft Excel - 1.5 Units

ADVISORY: BUS-003 or equivalent math skills

LMC Degree: DA

Transfer: CSU

Do you have the basic spreadsheet skills that today's employers require? Are you ready to begin learning how to use Microsoft Excel? This is a skills/performance based class that will give you the opportunity to learn basic Excel essentials like creating, editing, and formatting a workbook/worksheet, using basic formulas and functions, and creating basic charts. Learn how to create, edit, and format common business and personal spreadsheet documents like budgets, invoices, expense reports, balance sheets, and other basic financial reports. This class is either a required course or an elective for many degrees and certificates in Business. SC

Online Course

5643	ONLINE	Beckham, S	6/12-7/20
------	--------	------------	-----------

This is an ONLINE section for 7.5 hours each week
Email questions to sbeckham@losmedanos.edu

CHEMISTRY

SEC	DAYS	HOURS	ROOM	INSTRUCTOR	DATES
-----	------	-------	------	------------	-------

BUS-035C **Microsoft Powerpoint - 1.5 Units**

ADVISORY: Eligibility for ENGL-100

LMC Degree: DA

Transfer: CSU

Microsoft PowerPoint is one of the most common software tools used in business and for professional presentations today. This is a skills/performance-based class that will give you the opportunity to explore the basic and intermediate features of PowerPoint. Learn how to create and edit slide shows; enhance slides with sound, graphics, and animation; create and use custom templates; and prepare presentations for various types of delivery. This online course requires access to a Windows-based PC running Windows 7 or 8, a Broadband internet connection of 128 KBPS (minimum), and MS Power Point 2013. MAC-Based computers and software are not compatible with this course. This class is either a required course or an elective for many degrees and certificates in Business. SC

Online Course

5644	ONLINE	Knauer, C	6/12-7/20
------	--------	-----------	-----------

This is an ONLINE section for 7.5 hours each week. Email questions to cknauer@losmedanos.edu

BUS-092 **Business Ethics - .5 Unit**

ADVISORY: Eligibility for ENGL-100

LMC Degree: DA

Transfer: CSU

As public trust in corporate America and the government declines, it is essential that you have an understanding of business ethics and its importance in the workplace. In this class you will learn the basics of business ethics, study the characteristics of the 100 Best Corporate Citizens, learn how to become an ethical change agent in your organization, and how to develop solutions to the ethical problems you encounter in the workplace. P/NP

0101	TH	6:00-9:50pm	MA2-204	Winkler, L	6/29-7/6
------	----	-------------	---------	------------	----------

BUS-093 **Dealing with Difficult People - .5 Unit**

ADVISORY: Eligibility for ENGL-100

LMC Degree: DA

Transfer: CSU

Today's diverse and increasingly complex workplace is made up of individuals with very unique personalities and different communication styles. All of these individual personality types attempting to work together can often be difficult. This eight-hour course will help you to understand the "difficult" people that you work with, even when the "difficult" person is you. Understanding "difficult" people leads to less frustration. You will learn to recognize the relationship between "difficult" people and conflict, learn conflict resolution techniques, identify strategies for communicating with the "difficult" people in your workplace, and develop skills to constructively manage the conflict in your life. P/NP

0108	W	6:00-9:50pm	MA2-204	Winkler, L	6/28-7/5
------	---	-------------	---------	------------	----------

BUS-109 **Introduction to Business - 3 Units**

ADVISORY: BUS-018 and BUS-035C or BUS-035; eligibility for ENGL-100

LMC Degree: DA

Transfer: UC, CSU; C-ID BUS-110

Think you want to pursue business either as an entrepreneur or to transfer to a four-year program? This course provides 'snip-its' in all areas of business allowing students to explore potential career fields in business. This course is a survey of business organizations and operations within a global context. The class focuses on historical forces, cultural values, ethical consideration and how the basic business functions of entrepreneurship, marketing, management, accounting, financing and information processing interact with each other within the legal guidelines. Course applies toward degrees and certificates in Business. Course may also satisfy major prep requirements. SC

Online Course

0111	ONLINE	Wilkins, P	6/12-7/20
------	--------	------------	-----------

This is an ONLINE section for 9 hours each week.

Email pwilkins@losmedanos.edu if you have questions.

SEC	DAYS	HOURS	ROOM	INSTRUCTOR	DATES
-----	------	-------	------	------------	-------

BUS-160 **Personal Finance - 3 Units**

ADVISORY: BUS-003 or MATH-012; eligibility for ENGL-100

LMC Degree: DA

Transfer: CSU

\$\$\$\$ Wonder where your cash goes? \$\$\$\$ Feel intimidated by sales persons when purchasing a car? \$\$\$\$ How much are you really paying in interest? \$\$\$\$ Want to plan for your future? \$\$\$\$ Then enroll today in Personal Finance and become financially literate. This course addresses daily money decisions each of us makes. Learn about insurance benefit packages - health, disability, & life; investment vehicles - stocks, bonds, & mutual funds; consumer credit; home & car purchases; financing & interest choices; retirement needs; budgeting; and building a financial plan. This course is recommended for both business and non-business majors. SC

Online Course

0112	ONLINE	Wilkins, P	6/12-7/20
------	--------	------------	-----------

This is an ONLINE section for 12 hours each week.

Email pwilkins@losmedanos.edu if you have questions.

CHEMISTRY

CHEM-006 **Introduction to Inorganic and Physical Chemistry - 4 Units**

PREREQUISITE: MATH-025, MATH-029 or equivalent or one year of high school algebra

LMC Degree: DA

Transfer: UC; CSU Gen. Ed. Area B1, B3; IGETC Area 5A, 5C

Have you ever wondered about electrolytes and sports drinks? How does a battery generate electricity? Can we turn lead into gold? Chemistry supplies answers to these questions and countless others. This course gives a basic introduction to chemistry and its impact on you and the modern world. This course is designed for students who have not had a prior course in chemistry. LR

0965	MTWTH	8:00-10:05am	SC2-229	Chan, J	6/12-7/20
	MTWTH	10:15-1:15pm	SC2-235		

CHEM-007 **Introduction to General, Organic and Biochemistry - 4 Units**

PREREQUISITE: MATH-025, MATH-029 or its equivalent or one year of high school algebra

LMC Degree: DA

Transfer: CSU Gen. Ed. Area B1, B3

This course is a one-semester survey of the principles of general, organic, and biochemistry. Satisfies the chemistry prerequisite of health career programs requiring only one semester of chemistry, including Kinesiology and most nursing programs at CSUs and four-year colleges. It is one option to fulfill the chemistry prerequisite for LMC Microbiology (BIOSC-050). LR

0968	MTWTH	10:15-12:20pm	SC2-229	Chan, L	6/12-7/20
	MTWTH	1:30-4:20pm	SC2-235		

CHEM-025 **General College Chemistry - 5 Units**

PREREQUISITE: CHEM-006 or (one year of High School chemistry); MATH-029 MATH-030

LMC Degree: DA

Transfer: UC; CSU Gen. Ed. Area B1, B3; IGETC Area 5A, 5C; C-ID CHEM 110, C-ID CHEM 120S

CHEM-025 is the first semester of a one year course that fulfills the general chemistry requirement for students in chemistry, engineering, life science, physics, pre-dental, and pre-medical programs. Through this course, students will explore the microscopic world of atoms and molecules and gain a richer understanding of the world around us. LR

4338	MTWTH	8:00-12:20pm	SC2-234	Dehghani, A	6/12-7/20
	MTWTH	12:30-2:35pm	SC2-227		

SEC	DAYS	HOURS	ROOM	INSTRUCTOR	DATES
CHEM-026	General College Chemistry - 5 Units				
<i>PREREQUISITE: CHEM-025 or equivalent</i>					
<i>LMC Degree: DA</i>					
<i>Transfer: UC; CSU Gen. Ed. Area B1, B3; IGETC Area 5A, 5C; C-ID CHEM 120S, C-ID CHEM 110</i>					
CHEM-026 is the second semester of a one year course and fulfills the general chemistry requirement for students in chemistry, engineering, life science, physics, pre-dental, and pre-medical programs. Upon completion of this course, students will be prepared to enter Chemistry 028 Organic Chemistry. Students will also develop insight into the chemical workings of their lives. SC					
0272	MTWTH	10:15-12:20pm	SC1-136	Perri, A	6/12-7/20
	MTWTH	12:30-4:50pm	SC2-234		

CHILD DEVELOPMENT

CHDEV-010	Child Growth and Development - 3 Units				
<i>ADVISORY: Eligibility for ENGL-100</i>					
<i>LMC Degree: ADR: Social and Behavioral Sciences; DA</i>					
<i>Transfer: UC; CSU Gen. Ed. Area D, E; IGETC Area 4G; C-ID CDEV 100</i>					
Do you want to make a positive impact in the lives of children? This class will help you understand how children learn and develop while providing you with strategies to work effectively with children at home and at your place of employment. This class is great for parents, people who want to be parents, future and current teachers, nurses, doctors, police officers, social workers and counselors. Required for Child Development Major. Satisfies Department of Social Services Category I and the Child Development Permit Matrix Requirement. SC					
0042	MW	3:00-6:20pm	SC1-102	O'Malley, M	6/12-8/2
0038	MW	6:30-9:50pm	SC1-102	O'Malley, M	6/12-8/2
Online Course			ONLINE	Jones, E	6/12-8/3
0040					
<i>This is an ONLINE section for 6.75 hours each week.</i>					
<i>Email ejones@losmedanos.edu if you have questions.</i>					

CHDEV-020	Child, Family and Community - 3 Units				
<i>ADVISORY: Eligibility for ENGL-100</i>					
<i>LMC Degree: ADR: Social and Behavioral Sciences; DA</i>					
<i>Transfer: UC; CSU Gen. Ed. Area D; C-ID CDEV 110</i>					
Are you interested in exploring the impacts of the changing American family on children, families, caregivers, the community and the childcare profession? This class examines the psychological and social impacts of the family and community on the lives of children. SC					
0041	TTH	6:30-9:50pm	CS1-110	Rowe, D	6/13-8/3

CHDEV-083	Field Experience in an Early Childhood Program - 1-3 Units				
<i>ADVISORY: CHDEV-001 and 010 strongly recommended; eligibility for ENGL-100</i>					
<i>LMC Degree: DA</i>					
<i>Transfer: CSU</i>					
This class provides a great opportunity to work in a high quality early childhood program under the guidance of a trained mentor teacher! Gain valuable and fun hands-on experience with young children in college-certified infant, toddler, pre-school, or school age programs as you meet the experience requirements for the Child Development Permit and for licensing. This class is required for the Certificate of Achievement and the AS-T degree in Early Childhood Education. TB clearance REQUIRED by class start. TB skin test expires after 5 years. Proof of measles and pertussis (whooping cough) immunization within the last 10 years also required. SC					
0043				Fantuzzi, A	6/12-7/20
<i>9 hours by arrangement each week.</i>					

SEC	DAYS	HOURS	ROOM	INSTRUCTOR	DATES
CHDEV-170	Occupational Work Experience Education in Child Development - 1-4 Units				
<i>PREREQUISITE: Approved online application</i>					
<i>ADVISORY: Eligibility for ENGL-100</i>					
<i>LMC Degree: DA</i>					
<i>Transfer: CSU</i>					
Earn college credit while you learn on-the-job! For students whose current employment is related to their major. Students must be employed or formally volunteer, complete learning objectives, and work 75 paid hours or 60 volunteer hours for each unit of credit. SC					
0019				Fantuzzi, A	6/12-7/20
<i>Note: Students must submit an online Work Experience application and attend a mandatory Orientation. Go to www.losmedanos.edu/cwec for information.</i>					

COMPUTER SCIENCE

COMSC-040	Introduction to Computer and Business Information Systems - 4 Units				
<i>ADVISORY: Eligibility for ENGL-100</i>					
<i>LMC Degree: DA</i>					
<i>Transfer: UC, CSU</i>					
An introductory course in computer information systems including database management systems, networking, e-commerce, ethics and security, computer systems hardware and software components. Practical experience with common business computer applications is also included. LR					
4266	MTWTH	8:00-10:05am	CO-103	Jones, S	6/12-7/20
<i>+6 hours ONLINE lab each week.</i>					
Brentwood Center					
9522	MTWTH	12:30-2:35pm	BRT-10	Staff, L	6/12-7/20
<i>+ 6 hours ONLINE lab each week.</i>					
Online Course					
0050			ONLINE	Stanton, K	6/12-7/20
<i>This is an ONLINE section for 15 hours a week.</i>					
<i>Email questions to kstanton@losmedanos.edu</i>					
0078			ONLINE	Stanton, K	6/12-7/20
<i>This is an ONLINE section for 15 hours a week.</i>					
<i>Email questions to kstanton@losmedanos.edu.</i>					
0079			ONLINE	Staff, L	6/12-7/20
<i>This is an ONLINE section for 15 hours a week.</i>					

COMSC-121	Computer Forensics Investigations and Analysis - 3 Units				
<i>ADVISORY: COMSC-120; COMSC-040; eligibility for ENGL-100</i>					
<i>LMC Degree: DA</i>					
<i>Transfer: CSU</i>					
Interested in pursuing a career in Computer Forensics Investigations & Analysis? Learn concepts to conduct a forensics investigation using cutting edge technology, specialized software and acquire skills to become a Computer Forensics Specialist. This course will prepare you for the EnCase certification recognized worldwide. SC					
Online Course					
0023			ONLINE	Jones, S	6/12-8/3
<i>This is an ONLINE section for 13.5 hours each week.</i>					
<i>Email instructor at sajones@losmedanos.edu for further information.</i>					

COUNSELING

SEC	DAYS	HOURS	ROOM	INSTRUCTOR	DATES
-----	------	-------	------	------------	-------

COUNSELING**COUNS-030 Orientation to College - 1 Unit**

ADVISORY: Completion of the LMC Assessment Test for English and Math or equivalent

LMC Degree: DA

Transfer: CSU

New to college? Need an educational plan or a roadmap to your goal? Do you want more information how to succeed at LMC and what kind of degree you can complete? Then, this class is for you! This course will introduce you to valuable resources, academic programs and services to help you successfully start college. You'll learn about all the transfer and training options available to you in California. You'll also develop a personalized comprehensive educational plan designed to help you meet your goals. SC

0051	MTWTH	9:00-10:15am	SS4-412	Staff, L	6/19-7/6
------	-------	--------------	---------	----------	----------

This section is designed for EOPS Summer Prep Academy

0054	MTWTH	9:00-10:15am	CC2-229	Staff, L	6/19-7/6
------	-------	--------------	---------	----------	----------

This section is designed for EOPS Summer Prep Academy

Online Course

0072	ONLINE			Ramirez, S	6/12-7/6
------	--------	--	--	------------	----------

This is an ONLINE section for 4.5 hours each week. Email the instructor at sramirez@losmedanos.edu If you have questions.

COUNS-032 Career Development - 1.5 Units

LMC Degree: DA

Transfer: CSU

Would you like help identifying an academic major or career goal? Then this course is for you! It includes a variety of career assessments, a composite personality profile and resources to help you make a connection between your academic major and the world of work. P/NP

0030	MTWTH	10:30-12:35pm	CC2-229	Mack, M	6/19-7/6
------	-------	---------------	---------	---------	----------

This section is designed for EOPS Summer Prep Academy

0047	MTWTH	10:30-12:35pm	SS4-412	Staff, L	6/19-7/6
------	-------	---------------	---------	----------	----------

This section is designed for EOPS Summer Prep Academy

COUNS-034 College Success - 1.5 Units

LMC Degree: DA

Transfer: CSU

What are some of the characteristics and skills that can help you achieve success in college? In this course you will learn how to take notes, take exams, overcome procrastination, manage time, and cope with stress and test anxiety. You will learn about the many LMC student support services available. You will gain the self-confidence necessary to become a successful, actively engaged student in your educational process. P/NP

0061	MTW	12:30-3:20pm	CO-101	Staff, L	6/19-7/12
------	-----	--------------	--------	----------	-----------

This section is designed for students in the SUMMER BRIDGE PROGRAM.

SEC	DAYS	HOURS	ROOM	INSTRUCTOR	DATES
-----	------	-------	------	------------	-------

DRAMATIC ARTS**DRAMA-015 Multicultural Perspectives within Theatre - 3 Units**

ADVISORY: Eligibility for ENGL-100

LMC Degree: ADR: Ethnic/Multicultural Studies; Arts and Humanities; DA

Transfer: UC; CSU Gen. Ed. Area C1; IGETC Area 3A

Come explore theatre of many cultures. Students will read plays, discuss, and view theatre productions from African American, Asian American, European American, and Latino American and other cultures to discover the world around us that can only be explored in a dramatic setting. SC

0245	MTW	11:30-2:20pm	CC2-214	Ivory, T	6/12-7/19
------	-----	--------------	---------	----------	-----------

Brentwood Center

9533	MTW	8:30-11:20am	BRT-16	Norris, B	6/12-7/19
------	-----	--------------	--------	-----------	-----------

9525	MTW	3:30-6:20pm	BRT-6	Norris, B	6/12-7/19
------	-----	-------------	-------	-----------	-----------

Online Course

0246	ONLINE			Perry, J	6/12-7/20
------	--------	--	--	----------	-----------

This is an ONLINE section for 9 hours each week.

DRAMA-016 Theatre Appreciation - 3 Units

ADVISORY: Eligibility for ENGL-100

LMC Degree: ADR: Arts and Humanities; DA

Transfer: UC; CSU Gen. Ed. Area C1; IGETC Area 3A; C-ID THTR 111

Theatre is alive with humanity's joy, humor and tragedy. Learn the various aspects of theatre, how it came into being and why it continues to thrive and fascinate.

Through hands-on experience, lectures, live theatre production(s) and DVD/Videos specifically geared to the course, become a part of a community of theatre lovers.

SC

0248	MTW	3:30-6:20pm	CO-103	Ivory, T	6/12-7/19
------	-----	-------------	--------	----------	-----------

DRAMA-030 Chicano/a Mexican American Cinema: A Critical Analysis - 3 Units

ADVISORY: ENGL-100

LMC Degree: ADR: Ethnic/Multicultural Studies; DA

Transfer: UC; CSU Gen. Ed. Area C2; IGETC Area 3B.

Explore the Chicano Mexican American experience through films created about Mexican Americans as well as films created by Mexican Americans in the 20th and 21st centuries. You will journey on an epic adventure through a variety of subjects and genres such as dramas, comedies and documentaries. These films help you to understand and experience the journey that various Mexican American individuals and groups have taken to arrive at the 21st century in the United States. You will come to appreciate and acknowledge the far reaching effects of Mexican Americans on both the broader culture and the socio/political landscape throughout the United States and the world. SC

0247	MTW	8:30-11:20am	CC3-322	Garcia, N	6/12-7/19
------	-----	--------------	---------	-----------	-----------

0032	MTW	11:30-2:20pm	CC3-322	Garcia, N	6/12-7/19
------	-----	--------------	---------	-----------	-----------

Online Course

0008	ONLINE			Perry, J	6/12-7/20
------	--------	--	--	----------	-----------

This is an ONLINE section for 9 hours each week.

EMERGENCY MEDICAL SERVICES

SEC	DAYS	HOURS	ROOM	INSTRUCTOR	DATES
-----	------	-------	------	------------	-------

DRAMA-070 Film as an International Art Form - 3 Units

ADVISORY: Eligibility for ENGL-100

LMC Degree: ADR: Arts and Humanities; DA

Transfer: UC; CSU Gen. Ed. Area C1; IGETC Area 3A

Film is a universal language that can unite us as human beings and help us to better understand and appreciate our similarities and our differences. Take an enlightening journey through film by studying various genres of film (i.e. suspense, science fiction/ fantasy, survival and adventure, romance and comedies, Westerns and other genres) from the early 20th century up to the present time. Learn the various aesthetic elements of filmmaking as well as studying thematic sociological, political and historical links to the films we view. You will never look at films the same way again after taking this course. SC

0003	MTWTH	2:30-4:20pm	CC3-322	Garcia, N	6/12-7/20
------	-------	-------------	---------	-----------	-----------

This is a partially online section.

Online Course

0004		ONLINE		Perry, J	6/12-7/20
------	--	--------	--	----------	-----------

This is an ONLINE section for 15 hours a week.

DRAMA-914 Creating Theatre for Social Justice - 2 Units

ADVISORY: Eligibility for ENGL-095

LMC Degree: DA

Transfer: CSU

We live in a tumultuous time where lines are drawn and people refuse to see each other's side. In this class we will be researching and exploring social issues and conflicts and create art as a means of addressing these concerns. This class is an intensive collaborative project where we will be researching and interviewing members of the Black Lives Matter Movement as well as members of the Police force and their families and use that information to create and write a play. The play written in the summer will be performed in the fall semester for our community. LR

0009	MTWTH	5:00-9:20pm	CC3-322	Staff, L	6/12-7/20
------	-------	-------------	---------	----------	-----------

ECONOMICS**ECON-005 Economic History of the United States - 3 Units**

ADVISORY: Eligibility for ENGL-100

LMC Degree: ADR: Social and Behavioral Sciences; DA

Transfer: UC; CSU Gen. Ed. Area D; IGETC Area 4F

Have you ever wondered how the U.S. became a leading economic power in the world? To be a well rounded citizen, enroll now to gain an understanding of the historical origin, growth and development of the American economy. Engage in lively discussions on a variety of interdisciplinary topics such as immigration, race, big business, government policies and institutions. Meets one-half of the CSU American Institutions and Ideals transfer requirement. SC

Brentwood Center

9535	MTWTH	12:30-2:35pm	BRT-4	Mortimer, C	6/12-7/20
------	-------	--------------	-------	-------------	-----------

ECON-011 Principles of Macroeconomics - 3 Units

PREREQUISITE: MATH-029, MATH-030 or equivalent

ADVISORY: ECON-010

LMC Degree: ADR: Social and Behavioral Sciences; DA

Transfer: UC; CSU Gen. Ed. Area D; IGETC Area 4B

Macroeconomics gives you the "big picture" of the economy. Enroll now, to learn about inflation, unemployment, business cycles, monetary and fiscal policy. Become a well rounded citizen as you gain a deeper understanding of all of the above as well as the trade offs & ambiguities facing policy makers in the world around us. SC

0068	MTWTH	8:00-10:05am	CC3-361	Reyes-Juman, E	6/12-7/20
------	-------	--------------	---------	----------------	-----------

SEC	DAYS	HOURS	ROOM	INSTRUCTOR	DATES
-----	------	-------	------	------------	-------

ELECTRICAL/INSTRUMENTATION TECHNOLOGY**EETEC-004 Introduction to Electrical Technology - 3 Units**

ADVISORY: Eligibility for ENGL-100 and MATH-025

LMC Degree: DA

Transfer: CSU

Are you looking for a basic understanding of everyday electrical devices? This course investigates the workings of everyday electrical devices such as toasters, thermostats, fluorescent lights, electric motors, transformers and much more. It allows the student to look at the electrical concepts on the working level and explore the opportunities in the electrical field. SC

0026	TWTH	4:30-9:20pm	CC2-228	Staff, L	6/13-7/20
------	------	-------------	---------	----------	-----------

EETEC-180 Internship in Electrical / Instrumentation Technology - 5-4 Units

PREREQUISITE: Approved online application and employer placement

ADVISORY: Eligibility for ENGL-095

LMC Degree: DA

Transfer: CSU

****Earn College Elective Credits While You Learn On-The-Job**!!** An Occupational Work Experience Internship is for students who have declared a major, have taken classes in the major, and are ready for on-the-job experience in a paid or unpaid position. An internship involves working in a skilled or professional level assignment in the area of a student's vocational or academic major or field of interest. Students may earn up to 4 units per semester for a maximum of 16 units during community college attendance which may be applied as electives toward graduation. 12 units are transferable to CSU. A 30-hour/ .5 unit option is available for those participating in a college-approved job shadow and/or internship. SC

0283				Nasworthy, C	6/12-7/20
------	--	--	--	--------------	-----------

Note: Students must submit an online Work Experience application and attend a mandatory Work Experience Orientation. Go to www.losmedanos.edu/cwee for information.

EMERGENCY MEDICAL SERVICES**EMS-010 Emergency Medical Technician - 8 Units**

PREREQUISITE: Students must be 18 years of age by the date the course begins.

Students must have Valid CPR card BLS for Healthcare providers by the American Heart Association, and it must remain valid for the duration of the EMS-010 class.

Special note: Successful completion of EMS 14 meets the above prerequisite

ADVISORY: Eligibility for ENGL-095; Background checks, toxicology screenings and immunization for those students placed in Hospitals clinical internships. Medical clearance form and proof of inoculations, see below.

LMC Degree: DA

Transfer: CSU

Come join us in the fast-paced, exciting field of Emergency Medical Services by becoming an EMT. Learn the life-saving skills that allow you to assess patients in an emergency setting, use your knowledge and skills to treat them, stabilize and transport them for further care. This course requires extensive study and preparation time, including reading, completing online homework and online testing, and practicing skills, typically 10 to 12 hours per week out of the classroom. Clinical time is also required to obtain State-mandated patient contacts, typically an additional 24 hours minimum and 10 patient contacts. Successful completion of this course allows the student to take the national registry exam administered by the National Registry of Emergency Medical Technicians. Students are required to be fully inoculated with documentation of TB, Hepatitis B, MMR, tetanus, and proof of varicella(chicken pox) or any other form or type of vaccination required by our industry partners such as Hospitals, Fire Departments and Ambulance Providers. Also students must have a medical exam using DMV form 51 or LMC physical clearance form. Lastly, lab fees are \$65.00 and payment of these fees provides a stethoscope, uniform shirt, blood pressure cuff, a box of gloves, penlight and a safety glasses/goggles. LR

0251	MTWTH	10:00-4:20pm	CC3-365	Sierra, G	6/12-8/3
------	-------	--------------	---------	-----------	----------

ENGLISH

SEC	DAYS	HOURS	ROOM	INSTRUCTOR	DATES
-----	------	-------	------	------------	-------

ENGLISH

ENGL-083 Sentence Skills for College Writing - 3 Units

LMC Degree: DA

Do you stress out over your sentence structure or become confused when you hear terms like clause, conjunction, comma, or colon? Fear no more! This course reviews sentence structure and mechanics, while improving your proofreading and usage skills. You'll complete several fun and creative writing projects, while learning techniques for crafting clear and professional-sounding sentences, suitable for writing in college or the business world. You'll leave this course with the knowledge, skills, and confidence necessary to compose correct and sophisticated sentences in your writing tasks. SC

0473	MTWTH	8:00-10:05am	CC2-226	Handy, J	6/12-7/20
------	-------	--------------	---------	----------	-----------

ENGL-085 Introduction to College Reading - 3 Units

LMC Degree: NDA

Do you want to improve your critical reading and writing skills? Do you want to increase your vocabulary and learn how to analyze and examine a text critically? Do you want to be introduced to a world of similes, metaphors and poetic images? If so, Introduction to College Reading is for you as this course will help prepare you to read and comprehend pre-collegiate and college level reading. The course will also help you focus on the ability to apply, monitor, and adjust reading strategies for increased understanding. The course will cover comprehension, critical reading skills, vocabulary development and build and strengthen college success skills and strategies. SC

0470	MTWTH	11:30-1:35pm	SC1-131	Tapiarene, M	6/12-6/20
------	-------	--------------	---------	--------------	-----------

ENGL-100 College Composition - 3 Units

PREREQUISITE: ENGL-090; ENGL-095; ENGL-100S; ESL-044 or assessment process

CO-REQUISITE: ENGL-100S

LMC Degree: ADR: Language and Rationality: English Composition; DA

Transfer: UC; CSU Gen. Ed. Area A2; IGETC Area 1A

This college-level course will help you to improve your critical reading, thinking and writing skills—skills that are essential for future success! Students will analyze course readings and write organized and well-developed essays based on the assigned texts and their own research. Students will also read, analyze and write about one book-length work. This course is required for AA degree and transfer to CSU or UC. LR

0071	MTW	8:30-11:20am	SC1-131	Scarpa, D	6/12-7/19
0076	MTW	11:30-2:20pm	CC2-296	Warfe, S	6/12-7/19
0097	MTW	6:30-9:20pm	CC2-212	Scarpa, D	6/12-7/19

Brentwood Center

9530	MTW	11:30-2:20pm	BRT-14	Duran, L	6/12-7/19
------	-----	--------------	--------	----------	-----------

9505	MTW	6:30-9:20pm	BRT-14	Mayo, C	6/12-7/19
------	-----	-------------	--------	---------	-----------

Online Course

0073			ONLINE	Hiltbrand, J	6/12-7/20
------	--	--	--------	--------------	-----------

This section is completely ONLINE.

0074			ONLINE	Noel, J	6/12-7/20
------	--	--	--------	---------	-----------

This section is completely ONLINE.

0075			ONLINE	Zhu, Y	6/12-7/20
------	--	--	--------	--------	-----------

This section is completely ONLINE.

SEC	DAYS	HOURS	ROOM	INSTRUCTOR	DATES
-----	------	-------	------	------------	-------

ENGL-220 Critical Analysis and Inquiry - 3 Units

PREREQUISITE: ENGL-100

LMC Degree: DA

Transfer: UC; CSU Gen. Ed. Area A3; IGETC Area 1B

Have you ever wondered how you are influenced by the messages in popular culture? Should you believe what you read, hear or see in the media? We are surrounded by arguments every day, and it can be difficult to discern which arguments are valid. In this media-rich course, you will develop critical thinking skills as you interpret, evaluate, analyze, and criticize ideas encountered in academic readings, popular culture, and current events. SC

0237	MTWTH	8:00-10:05am	SC1-102	Yeong, M	6/12-7/20
------	-------	--------------	---------	----------	-----------

Brentwood Center

9520	MTW	12:30-3:20pm	BRT-12	Yeong, M	6/12-7/19
------	-----	--------------	--------	----------	-----------

ENGL-221 Advanced Composition and Critical Thinking - 3 Units

PREREQUISITE: ENGL-100

LMC Degree: DA

Transfer: UC; CSU Gen. Ed. Area A3; IGETC Area 1B

What do a laundry detergent ad, a presidential campaign speech, a case made by a lawyer in a courtroom, a sales pitch made by an advertising agency to a potential client, a protest in favor of raising the minimum wage, a column in the Experience, a sexual advance, the heated words of a TV pundit, and some article you had to read in English 100 all have in common? They are all arguments: someone is trying to persuade you, using some sort of reasoning, evidence, appeal to your emotions, or some other rhetorical device. English 221 is an advanced composition class (meaning you work on your writing skills) that focuses on arguments: reading and analyzing them, evaluating them, and writing your own. This course teaches you to write strong and effective arguments, an important skill for most academic majors and career paths, and fulfills two requirements for transfer: critical thinking and advanced composition. LR

0239	MTW	8:30-11:20am	CC2-222	Mitchell, C	6/12-7/19
------	-----	--------------	---------	-------------	-----------

0238	MTW	6:30-9:20pm	SC2-227	Harper, J	6/12-7/19
------	-----	-------------	---------	-----------	-----------

Brentwood Center

9534	MTW	11:30-2:20pm	BRT-16	Ashmore, J	6/12-7/19
------	-----	--------------	--------	------------	-----------

Online Course

0240			ONLINE	Hiltbrand, J	6/12-7/20
------	--	--	--------	--------------	-----------

This section is completely ONLINE.

ENGL-230 Thinking and Writing Critically about Literature - 3 Units

PREREQUISITE: ENGL-100

LMC Degree: ADR: Arts and Humanities; DA

Transfer: UC; CSU Gen. Ed. Area C2

Is there truth in fiction? Every well-rounded, educated person needs to be familiar with some of the great works of literature – short stories, poems, plays, novels – and this course gives you that opportunity, while continuing to develop your skills in critical reading, thinking, writing and research. Enjoy the pleasures of literature while satisfying your G.E. and transfer requirements too! LR

0049	MTW	8:30-11:20am	CC2-296	Brown, G	6/12-7/19
------	-----	--------------	---------	----------	-----------

Online Course

0048			ONLINE	Hiltbrand, J	6/12-7/19
------	--	--	--------	--------------	-----------

This section is completely ONLINE.

SEC DAYS HOURS ROOM INSTRUCTOR DATES

SEC DAYS HOURS ROOM INSTRUCTOR DATES

ENGLISH 100/100S LINKED SECTIONS

FIRE TECHNOLOGY

The following two courses are linked classes and must be taken together.
 See also the English 100 section in the English section

FIRE-101 Fire Protection Organization - 3 Units
 ADVISORY: Eligibility for ENGL-095

ENGL-100 College Composition - 3 Units
 PREREQUISITE: ENGL-090; ENGL-095; ENGL-100S; ESL-044 or assessment process
 CO-REQUISITE: ENGL-100S
 LMC Degree: ADR: Language and Rationality: English Composition; DA
 Transfer: UC; CSU Gen. Ed. Area A2; IGETC Area 1A
 This college-level course will help you to improve your critical reading, thinking and writing skills—skills that are essential for future success! Students will analyze course readings and write organized and well-developed essays based on the assigned texts and their own research. Students will also read, analyze and write about one book-length work. This course is required for AA degree and transfer to CSU or UC. LR
 4019 MTWTH 11:30-12:55pm CC2-221 Lyons, D 6/12-8/3
 This section requires enrollment in ENGL-100S-4020.

LMC Degree: DA
 Transfer: CSU
 This class is one of the fire courses required for an Associate Degree in Fire Technology. It provides the foundation and basic information necessary to succeed in the fire technology program. Fire-101 can be considered your introduction to the fire service. This class is designed to provide information regarding fire service history, fire safety, fire terminology, fire loss and fire facts. One of the most important aspects of this class is the information provided that is pertinent to the hiring process. SC
 0107 MTW 11:30-2:20pm SC2-225 Grillo, A 6/12-7/19

ENGL-100S Support for College Composition - 1 Unit
 PREREQUISITE: ENGL-090; ENGL-095 or assessment process
 CO-REQUISITE: ENGL-100
 LMC Degree: NDA
 Want extra help with English 100? This course will help you to improve your reading, writing, and study skills in the pursuit of completing English 100. An intensive support course, English 100S is a space for you to work alongside your instructor and classmates in producing college-level essays that engage diverse non-fiction texts. You will become familiar with the steps of the writing process (drafting, revising, editing, and proofreading) with particular focus on revision using instructor feedback while also developing your reading skills and academic success strategies. P/NP
 4020 MTWTH 1:00-2:05pm CC2-221 Lyons, D 6/12-8/3
 This section requires enrollment in ENGL-100-4019.

FIRE-102 Fire Behavior and Combustion - 3 Units
 ADVISORY: FIRE-101; eligibility for ENGL-095

LMC Degree: DA
 Transfer: CSU
 This is one of the five courses required for an Associate Degree in Fire Technology. It is probably the most important of all the courses because it provides you with critical information concerning the chemistry of fire and its behavior. It goes into detail about the fire starts, continues and is extinguished. In order to handle fire emergencies, you must know the fundamentals of its makeup. There are all types of fires and each has its own particular danger. This course teaches you on how to suppress the structure, vehicle, rubbish/trash or wildland fire. This course is accredited by the International Fire Service Training Association (IFSTA), National Fire Protection Association (NFPA), California State Firefighters Association (CSFA), and the Firefighter's Handbook: Essentials of Firefighting and Emergency Response. SC
 0106 MTW 2:30-5:20pm SC2-225 Staff, L 6/12-7/19

ENGLISH AS A SECOND LANGUAGE (ESL)

FIRE-106 Physical Fitness for Public Safety Personnel - 1 Unit

ESL-011 Vocabulary Development I - 3 Units
 ADVISORY: One year of formal English as a Second Language instruction, or a level one placement on the ESL placement test. Concurrent enrollment in ESL-021, ESL-031 and/or ESL-041
 LMC Degree: NDA
 Do you want to learn new words in English and improve your reading skills? In this class, you will learn and practice strategies to add more words to your vocabulary. Learn how to effectively use the dictionary, to read more effectively using context clues and use English words appropriately. SC
 0465 MTWTH 3:00-5:50pm SC1-131 Tapiarene, M 6/12-7/20

LMC Degree: DA
 Transfer: CSU
 This is a physically active class designed to point out and explore current trends in Public Safety Physical Fitness Hiring requirements. You will be physically evaluated and then given a fitness program to assist you in accomplishing your fitness goals. SC
 0103 MTWTH 6:30-8:35pm PEW-1 Muhammad, S 6/12-7/20

HISTORY

HIST-029 United States History until 1865 - 3 Units

ADVISORY: Eligibility for ENGL-100
 LMC Degree: ADR: Social and Behavioral Sciences; DA
 Transfer: UC; CSU Gen. Ed. Area D; IGETC Area 4F
 An introduction to the early history of America as a developmental, trans-hemispheric emergence of diverse peoples and cultures globally situated. Students will consider the gradually evolving "First New Nation" status of the U.S., attending to patterns, periods and topical themes prominent in its "nationalizing" experience as conditioned by regional and international realities. Partially fulfills the CSU American Institutional/Ideals requirement. SC
 0081 MTWTH 8:00-10:05am SC1-132 Tripp, R 6/12-7/20
Brentwood Center
 9502 MTWTH 10:15-12:20pm BRT-12 Staff, L 6/12-7/20
Online Course
 0087 ONLINE Bearden, J 6/12-7/20
 This is an ONLINE section for 9 hours each week.
 Email jbearden@losmedanos.edu if you have questions.

HUMANITIES

SEC	DAYS	HOURS	ROOM	INSTRUCTOR	DATES
HIST-030	United States History from 1865 - 3 Units				
<i>ADVISORY: Eligibility for ENGL-100</i>					
<i>LMC Degree: ADR: Social and Behavioral Sciences; DA</i>					
<i>Transfer: UC; CSU Gen. Ed. Area D; IGETC Area 4F</i>					
Are you curious how the United States has become a world "super-power" of the 21st century? Would you like to examine how "free market" capitalism and its ever-expanding urban-industrial order contributed to the United States being both the most envied and feared "super-power" of the 21st century? These questions and others will be covered in this course. Partially fulfills the CSU American Institutional/Ideals requirement. SC					
0088	MTWTH	12:30-2:35pm	CC2-222	Tripp, R	6/12-7/20
Online Course					
0091			ONLINE	Bearden, J	6/12-7/20
<i>This is an ONLINE section for 9 hours each week.</i>					
<i>Please email jbearden@losmedanos.edu if you have any questions.</i>					

HUMANITIES

HUMAN-020	Medieval and Renaissance Humanities - 3 Units				
<i>ADVISORY: Eligibility for ENGL-100</i>					
<i>LMC Degree: ADR: Arts and Humanities; DA</i>					
<i>Transfer: UC; CSU Gen. Ed. Area C2; IGETC Area 3B</i>					
The Western world in which we live today is a product of the past we share. The Medieval and Renaissance periods bring to mind images of kings, knights, popes, monks, castles, cathedrals and great art, but they are so much more than these. They mark the process by which people like ourselves struggled with the same issues that confront us today, but with demon-haunted imaginations and hearts that yearned for God. Join us, as we seek to understand their struggles to integrate faith with reason, power with honor and leadership with loyalty, based in the voices of the great writers of the era. LR					
0021	MTWTH	8:00-11:20am	CC2-221	Alexander, K	7/10-8/3

MATHEMATICS

MATH-012	Prealgebra - 4 Units				
<i>LMC Degree: NDA</i>					
MATH-012 a four-unit lecture/lab prealgebra course designed to provide students with the background skills and knowledge in preparation for the study of elementary algebra. Prealgebra skills include arithmetic involving integers, signed fractions, and signed decimals, with basic proportions and percents, as well as the order of operations, exponents, estimation and solving linear equations. Applications will include introductory topics from algebra, geometry, and descriptive statistics. In addition to prealgebra skills, students will learn effective learner skills such as self-assessment, goal-setting, and using campus resources. SC					
0225	MTWTH	8:30-11:20am	MA2-204	Poku, K	6/12-7/20
<i>+ 6 hours by arrangement each week.</i>					
0146	MTWTH	11:30-2:20pm	MA2-204	Von Bergen, J	6/12-7/20
<i>+ 6 hours by arrangement each week.</i>					
Brentwood Center					
9539	MTWTH	7:00-9:50pm	BRT-8	Bennett, E	6/12-7/20
<i>+ 6 hours by arrangement each week.</i>					
<i>Students enrolled in this section will be expected to use computers for a portion of their coursework.</i>					

SEC	DAYS	HOURS	ROOM	INSTRUCTOR	DATES
MATH-025	Elementary Algebra - 5 Units				
<i>PREREQUISITE: One year high school algebra, MATH-012 with a grade of "C" or better, or completion of coursework at another college that is comparable to Math 12 with a grade of "C" or better, or demonstration of equivalent algebra skills based on our LMC assessment process, or equivalent assessment recommendation from another college.</i>					
<i>LMC Degree: DA</i>					
How do scientists model the real world and make predictions using math? Math 25 is an elementary algebra course that introduces students to applications of math through linear equations, systems of linear equations, and quadratic equations. This course covers Algebra I in one semester. This course is for students whose majors require Intermediate Algebra (Math 30) such as math, science, or business. SC					
0145	MTWTH	8:00-12:20pm	MA2-205	Newball, W	6/12-7/20
<i>+ 3 hours by arrangement each week.</i>					

Brentwood Center					
9515	MTWTH	8:00-11:30am	BRT-7	Khalilieh, J	6/12-7/20
<i>+ 6 hours by arrangement each week.</i>					
<i>Students enrolled in this section will be expected to use computers for a portion of their coursework.</i>					

MATH-026	Plane Geometry - 3 Units				
<i>PREREQUISITE: One year high school algebra, or MATH-025 with a grade of "C" or better, or MATH-029 with a grade of "C" or better, or completion of coursework at another college that is comparable to Math 25 with a grade of "C" or better, or demonstration of equivalent algebra skills based on our LMC assessment process, or equivalent assessment recommendation from another college.</i>					
<i>LMC Degree: ADR: Language and Rationality: Communication and Analytical Thinking; DA</i>					
Geometry surrounds us! From ancient war machines to modern GPS tracking systems, cultures old and new recognize the importance of formally studying the spatial relationships that we see everywhere. This course will teach you not only what these relationships are, but how to use logical and mathematical reasoning to discover and explain them. Topics include lines, planes, angles, triangles, polygons, circles, transformations, similar figures, perimeter, area, volume, logical proof, constructions, the use of drawing tools, and the Pythagorean Theorem. This course satisfies the math requirement for an associate degree, and is a required pre-requisite for pre-calculus. SC					
0160	MTWTH	8:00-10:05am	CC2-213	Lavender, S	6/12-7/20
<i>+ 6 hours by arrangement each week.</i>					
Brentwood Center					
9516	MTW	3:30-6:20pm	BRT-8	Staff, L	6/12-7/19
<i>+ 6 hours by arrangement each week.</i>					

MATH-027	Pre-Statistics - 4 Units				
<i>LMC Degree: DA</i>					
Math 27 prepares you for college-level Statistics (Math 34). In Math 27 you will work on projects and collaborative activities that develop your math skills, as well as your reading, writing, and critical thinking skills. (If you have successfully completed intermediate algebra (Algebra II) with a C or better, you are eligible to take Math 34 now. If you have successfully completed Algebra I with a C or better but not Algebra II, consider taking Math 34 and Math 28 together, instead of Math 27. But if you feel that you need more than a quick review, Math 27 provides a more intensive preparation for Math 34.) This course is for students who plan to major in all the wonderful fields that are NOT math, science, computer science, business, technology, engineering, and calculus intense fields in the social sciences. SC					
0161	MTWTH	11:30-3:50pm	MA2-208	Crain, M	6/12-7/20

SEC	DAYS	HOURS	ROOM	INSTRUCTOR	DATES
-----	------	-------	------	------------	-------

MATH-030 Intermediate Algebra - 4 Units

PREREQUISITE: MATH-025 with a grade of "C" or better, or completion of coursework at another college that is comparable to MATH-025 with a grade of "C" or better, or demonstration of equivalent elementary algebra skills based on our LMC assessment process, or equivalent assessment recommendation from another college, or successful completion of high school Algebra II.

LMC Degree: ADR: Language and Rationality: Communication and Analytical Thinking; DA

Math 30 is an intermediate algebra course with focus on linear, quadratic, exponential, and logarithmic functions. Students will investigate algebra concepts from multiple perspectives including tables, graphs, symbolic forms with variables, and written descriptions. Students will develop proficient skills in communication of mathematics, problem-solving, use of multiple representations, effective learning skills and learning to apply algebra to analyze and solve real-life problems takes time and effort. A graphing calculator or graphing software is required. SC

4017 MTWTH 8:30-11:20am MA2-208 Matthews, S 6/12-7/20
+ 6 hours by arrangement each week.

4018 MTWTH 11:30-2:20pm MA2-207 Magante, M 6/12-7/20
+ 6 hours by arrangement each week.

6044 MTWTH 6:30-9:20pm MA2-207 Ghannadan, S 6/12-7/20
+ 6 hours by arrangement each week.

Brentwood Center

9517 MTWTH 8:30-11:20am BRT-11 Chu, Y 6/12-7/20
+ 6 hours by arrangement each week.

Students enrolled in this section will be expected to use computers for a portion of their coursework.

Online Course

9518 ONLINE Stricker, M 6/12-7/20
This is an ONLINE section for 18 hours each week.

MATH-034 Introduction to Statistics - 4 Units

PREREQUISITE: MATH-027, MATH-028, MATH-029, MATH-030 or equivalent CO-REQUISITE: MATH-028 (if none of the above prerequisites have been met)

LMC Degree: ADR: Language and Rationality: Communication and Analytical Thinking; DA

Transfer: UC; CSU Gen. Ed. Area B4

Is Barry Bonds the best homerun hitter? Can card tricks be used to determine if someone has ESP? How do statistics and probability help us answer these questions? This course will introduce you to the world of statistics and its connection to probability. You will learn to produce, interpret, present and draw conclusions from data. Technology, either a graphing calculator or software, will be required. Details given on the first day of class. SC

0012 MTWTH 8:30-11:20am MA2-203 Liang, W 6/12-7/20
+ 6 hours by arrangement each week.

0007 MTWTH 11:30-2:20pm MA2-203 Rust, T 6/12-7/20
+ 6 hours by arrangement each week.

0013 MTWTH 3:30-6:20pm MA2-207 Blundell, S 6/12-7/20
+ 6 hours by arrangement each week.

0014 M 6:30-9:20pm MA2-203 Von Bergen, J 6/12-7/20
This is a 'partially online' class. This class meets Mondays 6:30-9:20pm in MA2-203 and 15 hours online every week. Final Exam 6:30-9:20 on Thursday 7/20.

0011 T 6:30-9:20pm MA2-203 Von Bergen, J 6/12-7/20
This is a 'partially online' class. This class meets Tuesday 6:30-9:20pm in MA2-203 and 15 hours online every week. Final Exam 6:30-9:20 on Thursday 7/20.

Brentwood Center

9519 MTWTH 8:30-11:20am BRT-10 Wolf, V 6/12-7/20
+ 6 hours by arrangement each week.

Students enrolled in this section will be expected to use computers for a portion of their coursework.

SEC	DAYS	HOURS	ROOM	INSTRUCTOR	DATES
-----	------	-------	------	------------	-------

9528 MTWTH 3:30-6:20pm BRT-14 Staff, L 6/12-7/20
+ 6 hours by arrangement each week.

Students enrolled in this section will be expected to use computers for a portion of their coursework.

9529 MTWTH 7:00-9:50pm BRT-6 Gangar, J 6/12-7/20
+ 6 hours by arrangement each week.

Students enrolled in this section will be expected to use computers for a portion of their coursework.

MATH-040 Precalculus - 4 Units

PREREQUISITE: MATH-026 and MATH-030 or MATH-029 or equivalent CO-REQUISITE: MATH-026

LMC Degree: ADR: Language and Rationality: Communication and Analytical Thinking; DA

Transfer: UC; CSU Gen. Ed. Area B4; IGETC Area 2A

Students will learn how functions are used to describe real-world situations.

Students will study functions grouped into families: linear, exponential, trigonometric, power, and others. Students will investigate functions using algebra, tables, graphs, and verbal descriptions. This course is primarily intended to prepare students for calculus but may also serve as an advanced course for students not intending to continue with calculus. Graphing calculator, computer algebra system, or the equivalent required. SC

0099 MTWTH 12:30-3:20pm MA2-205 Batra, P 6/12-7/20
+ 6 hours by arrangement each week.

Brentwood Center

9521 MTWTH 8:30-11:20am BRT-8 Frates, C 6/12-7/20
+ 6 hours by arrangement each week.

Students enrolled in this section will be expected to use computers for a portion of their coursework.

9524 TH 6:30-9:00pm BRT-14 Hubbard, S 6/12-7/20
This is a partially online section. This class meets Thursday 6:30-9pm in BRT-14, with remaining hours online. Final Exam on Thursday 7/20.

Online Course

0098 ONLINE Cohen, J 6/12-7/20
This is an ONLINE section. Class meets on Monday 6/12 3:00-7:00pm for Orientation, 6/26 & 7/10 3:00-7:00pm for Mid-term and on 7/20 3:00-7:00pm for Final Exam.

MATH-050 Calculus and Analytic Geometry I - 4 Units

PREREQUISITE: MATH-026 and 040 or equivalent

LMC Degree: ADR: Language and Rationality: Communication and Analytical Thinking; DA

Transfer: UC; CSU Gen. Ed. Area B4; IGETC Area 2; C-ID MATH 210

Do you want to know how scientists, engineers and economists use mathematics in research? Math 50 is an introduction to calculus and the geometry of functions, including the use of calculus in scientific fields. We will introduce, explore, and apply the derivative and introduce the integral in the context of rates of change. This course is the first of the three-semester calculus sequence. Applications are made to various fields including physics, engineering, biology, and social science. This course is required for math, science and engineering majors. Use of a mathematical software package or graphing calculator required. SC

0022 MTWTH 8:30-11:20am MA2-207 Briones, R 6/12-7/20
+ 6 hours by arrangement each week.

0089 MTWTH 3:30-6:20pm MA2-203 Magante, M 6/12-7/20
+ 6 hours by arrangement each week.

MUSIC

SEC	DAYS	HOURS	ROOM	INSTRUCTOR	DATES
-----	------	-------	------	------------	-------

MUSIC

MUSIC-010 **Music Literature - 3 Units**

ADVISORY: Eligibility for ENGL-095

LMC Degree: ADR: Arts and Humanities; DA

Transfer: UC; CSU Gen. Ed. Area C1; IGETC Area 3A

Discover music from its inception to contemporary times, especially in regards to music of the Western world. This course investigates music as an interdisciplinary course. Class activities include listening to many styles of music ranging from classical to rock. Find out who was important, how music was and how it affects music today. SC

Brentwood Center

9536 MTW 8:30-11:20am BRT-1 Zuniga, L 6/12-7/19

Online Course

0006 ONLINE Chuah, C 6/12-7/20

This is an ONLINE section for 9 hours each week. Please email instructor KChuah@losmedanos.edu if you have questions.

MUSIC-012 **Popular Music in American Culture - 3 Units**

ADVISORY: Eligibility for ENGL-100

LMC Degree: ADR: Arts and Humanities; DA

Transfer: UC; CSU Gen. Ed. Area C1; IGETC Area 3B. Also satisfies American Cultures Requirement at UC B

A multicultural study of the evolution of American musical styles, including blues, salsa, samba, rock, jazz, pop, rhythm and blues and country and folk, with emphasis on the African American, Euro American, Latin American origins of these contemporary styles and their historical contexts. Class activities will include field trips to Jazz, Blues or Salsa nightclubs and in-class performances by guest artists. LR

Online Course

0010 ONLINE Zilber, M 6/12-7/20

This is an ONLINE section for 9 hours each week. Please email instructor mzilber@losmedanos.edu if you have questions.

MUSIC-015 **Basic Music - 3 Units**

ADVISORY: Eligibility for ENGL-100; prior or concurrent enrollment in MUSIC-030

LMC Degree: ADR: Arts and Humanities; DA

Transfer: UC (UC transferable, but may not be combined with MUSIC-013) CSU Gen. Ed. Area C1; IGETC Area 3A

Do you want to be able to read and write music? This course will teach you the fundamentals of music theory and harmony across various styles of music and cultures. You will learn to write a simple original composition. SC

0015 MTWTH 3:00-6:20pm MU3-710 Henderson, S 6/12-7/7

Brentwood Center

9540 MTW 11:30-2:20pm BRT-11 Zuniga, L 6/12-7/19

MUSIC-030 **Basic Keyboard Skills - 1.5 Units**

LMC Degree: DA

Transfer: UC, CSU

Designed for anyone wanting to learn how to play the piano. No music background needed. Does not fulfill piano requirement for music majors. LR

0018 MTWTH 8:00-11:20am MU3-750 Henderson, S 6/12-7/6

MUSIC-065 **Class Voice - 1 Unit**

ADVISORY: Eligibility for ENGL-095

LMC Degree: DA

Transfer: UC, CSU

This course is for everyone who desires to work on fundamentals techniques in singing, tone production, musicianship and interpretation. Designed for varied ability levels. Possible public recitals will be included. LR

0005 MTWTH 11:30-12:50pm MU3-710 Henderson, S 6/12-7/6

+ 8 hours by arrangement each week.

SEC	DAYS	HOURS	ROOM	INSTRUCTOR	DATES
-----	------	-------	------	------------	-------

MUSIC-067 **Jazz and Vocal Popular Techniques - 1 Unit**

ADVISORY: Eligibility for ENGL-095

LMC Degree: DA

Transfer: UC, CSU

Learn to sing popular forms of music such as blues, jazz, gospel and musical theatre selections. This course will analyze individual vocal styles and approaches and offer corrective vocal warm ups. Breath control, tone production, vocal placement, phonetics in group and individual practice and performing emphasizing the special needs of self-presentation will be explored. LR

0034 MTWTH 11:30-12:50pm MU3-710 Henderson, S 6/12-7/6

+ 8 hours by arrangement each week

NURSING - REGISTERED

RNURS-020 **Transition to the RN Program - .3 Unit**

PREREQUISITE: Accepted to the Registered Nursing Transition Program

LMC Degree: DA

Transfer: CSU

This course assists the Licensed Vocational Nurses (LVN) and the transfer student to transition into the second year of the Registered Nursing program. Emphasis is on Nursing Process, the RN scope of practice, the Registered Nursing program curriculum and expectations, competency in drug dosage calculations, and use of campus resources. P/NP

0431 M 9:00-2:50pm CC3-361 Hawkes, D 8/7-8/7

NURSING - VOCATIONAL

VONUR-008 **Medical Terminology for Healthcare Occupations - 1 Unit**

ADVISORY: Eligibility for ENGL-100

LMC Degree: DA

Are you working or interested in working in the healthcare field? This course provides an integrated approach to learning medical terminology. Learn the basic rules for using word parts to form medical terms, how to pronounce medical terms using phonetic pronunciation, and how to relate medical terminology to anatomy and physiology. LR

0432 MTWTH 2:00-6:20pm CO-101 Reno, S 7/10-7/13

VONUR-030 **IV Therapy/Blood Withdrawal - 1.5 Units**

PREREQUISITE: RN, LVN, Graduate RN/ VN Program, Senior VN/RN program

LMC Degree: NDA

This course will instruct students on the purpose of IV and blood withdrawal therapy, legal implications, management of IV's, and possible complications of venipuncture.

Upon attending all class sessions, passing a posttest with 75% and successfully completing three IV venipuncture's and three blood withdrawals the participant will receive a state certificate for IV Therapy/Blood Withdrawal Certification. The IV therapy and Blood Withdrawal class is a 36 contact hour course with 27 hours spent in theory and 9 hours spent in practical demonstration. BVNPT Instructor provider # 1B-2763. The class may be taken for CEU's only (this course is not approved for RN license renewal). A \$20.00 lab fee is required LR

0430 MTWTH 8:00-4:50pm CC3-340 O'Rourke, J 7/10-7/13

SEC	DAYS	HOURS	ROOM	INSTRUCTOR	DATES
-----	------	-------	------	------------	-------

SEC	DAYS	HOURS	ROOM	INSTRUCTOR	DATES
-----	------	-------	------	------------	-------

NUTRITION

NUTRI-055 Introduction to Nutrition - 3 Units

ADVISORY: Eligibility for ENGL-100

LMC Degree: DA

Transfer: UC, CSU

Do you want to learn accurate information about nutrition? What about all those diets? Do they work? Do I have to exercise to lose weight? You will learn about the basics of nutrition, covering nutrition throughout the life cycle, diet for health maintenance and disease prevention. A course designed for students in nursing as well as for the general consumer seeking information for personal and family needs. LR

0115	MTW	6:30-9:20pm	SC1-132	McConnell, D	6/12-7/19
------	-----	-------------	---------	--------------	-----------

Brentwood Center

9507	MTWTH	3:30-5:35pm	BRT-16	Staff, L	6/12-7/20
------	-------	-------------	--------	----------	-----------

PE - ACTIVITIES

PE-026A Beginning Soccer - 1 Unit

LMC Degree: DA

Transfer: UC, CSU

Have you always wanted to learn the game of soccer or improve the game you already have? This course will teach you the rules of soccer and the skills to participate in a soccer game. You will learn how to pass, trap, dribble, and shoot the ball, all while getting in a great cardiovascular workout. If you already know how to play, you will still benefit from sharpening up your soccer skills and participating in short sided scrimmages. Designed for the beginning player. SC

5087	MTWTH	12:30-2:35pm	FB-FIELD	Sullivan, Z	6/12-7/20
------	-------	--------------	----------	-------------	-----------

PE-030 Tennis - 1 Unit

LMC Degree: DA

Transfer: UC, CSU

Have you always wanted to learn the game of tennis or improve the game you already have? This course will teach you the skills for the serve, forehand, backhand, strokes, so you can effectively play the game. Designed for the beginning, intermediate and advanced player. Student must supply own racquet and 3 new balls. SC

5086	MTWTH	8:00-10:05am	COURTS	Villegas, R	6/12-7/20
------	-------	--------------	--------	-------------	-----------

PE - EDUCATION

PE-105 CPR/First Aid - 3 Units

LMC Degree: DA

Transfer: UC, CSU

As a Kinesiology major you may be required to respond to emergency situations including physical injury and illness. In this class, you will learn how to identify and treat common first aid and potential life threatening medical situations. These situations can occur on a daily basis when working with the physically active in Athletics and Kinesiology. Topics of discussion will include those pertinent to the professions within the Kinesiology major. This course will cover first aid and cardiopulmonary resuscitation (CPR) for the infant, child and adult. Certification card will be issued upon successful completion of testing given in this course. A mandatory material fee of \$30.00 (CPR mask and certification card) is required. LR

0136	MTW	6:30-9:20pm	CC3-365	Hess, T	6/12-7/19
------	-----	-------------	---------	---------	-----------

PE - FITNESS

PE-006 Physical Fitness - 1 Unit

LMC Degree: DA

Transfer: UC, CSU

Would you like to improve your flexibility, strength and cardiovascular fitness levels? Physical Fitness a class that will have you walking, running, cycling and using a variety of strength training principles to improve your overall level of fitness. SC

5055	MTWTH	12:30-2:35pm	PER-1	Ringer, B	6/12-7/20
5054	MTWTH	3:30-5:35pm	PER-1	Ringer, B	6/12-7/20

PE-008A Beginning Weight Training - 1 Unit

LMC Degree: DA

Transfer: UC, CSU

(formerly PE-008) This course includes instruction in all elements of weight training. It will involve techniques, safety procedures, knowledge of muscle groups, equipment use, warm-up, strength and endurance training, exercise progression and improved fitness. SC

5061	MTWTH	10:15-12:20pm	PEW-1	Villegas, R	6/12-7/20
------	-------	---------------	-------	-------------	-----------

PE-010A Beginning Circuit Training - 1 Unit

LMC Degree: DA

Transfer: UC, CSU

(formerly PE-010) Beginning Circuit Training is a self-paced activity class that will include a variety of exercises to help you improve your cardiovascular strength/endurance, as well as your muscular strength/endurance. You will learn the major muscle groups and proper body mechanics necessary to perform safe and effective exercises and improve your overall fitness level. Come prepared to walk, jog, ride, jump, lift, sweat and smile! SC

5069	MTWTH	6:30-8:35pm	PER-1	McDermott, J	6/12-7/20
------	-------	-------------	-------	--------------	-----------

PE-049 Total Body Sculpting - 1 Unit

LMC Degree: DA

Transfer: UC, CSU

A fun, energetic fitness class for those who want to work out! Tone your entire body through the use of conditioning exercises, hand weights, Pilates exercise for core strength, cardio activities for cardiovascular fitness, and flexibility for lifelong fitness. SC

5085	MTWTH	8:00-10:05am	PED-1	Ralston, C	6/12-7/20
------	-------	--------------	-------	------------	-----------

PHILOSOPHY

SEC	DAYS	HOURS	ROOM	INSTRUCTOR	DATES
-----	------	-------	------	------------	-------

PHILOSOPHY

PHIL-100 Introduction to Philosophy - 3 Units

ADVISORY: Eligibility for ENGL-100

LMC Degree: ADR: Arts and Humanities; DA

Transfer: UC; CSU Gen. Ed. Area C2; IGETC Area 3B

(formerly PHIL-040) This course explores the fundamental human questions that have been addressed in philosophy. Some of these questions include: Does God exist? How do we know what we know? What is real? What is right and wrong? How do we live a good life? This course will survey different historical and contemporary answers, while challenging students to critically engage with these questions to better understand themselves, their community and the world around them. SC

Brentwood Center

9531	MTWTH	8:00-10:05am	BRT-14	Smith, J	6/12-7/20
------	-------	--------------	--------	----------	-----------

PHIL-110 Critical Thinking and Composition - 3 Units

PREREQUISITE: ENGL-100

LMC Degree: DA

Transfer: UC; CSU Gen. Ed. Area A3

(formerly PHIL-041) Some people believe that former president George Bush masterminded the 9-11 bombing, that global warming is a hoax and that plastic water bottles cause cancer. Perhaps you are one of these people. Would you be willing to test your beliefs? Introduction to Critical Thinking and Composition will challenge students to analyze arguments to determine what makes for a good argument, learning the skills necessary to sort out the truth and present well structured written arguments. SC

0085	MTWTH	12:30-2:35pm	CO-103	Sherick, B	6/12-7/20
------	-------	--------------	--------	------------	-----------

PHYSICS

PHYS-015 Introduction to Physics - 4 Units

PREREQUISITE: MATH-029, MATH-025 or equivalent; or one year high school algebra

ADVISORY: Eligibility for ENGL-100

LMC Degree: ADR: Natural Sciences; DA

Transfer: UC; CSU Gen. Ed. Area B1, B3; IGETC Area 5A, 5C

Have you ever wondered why airplanes can fly, how heat engines and refrigerators work, how an electric motor works, or how to make your own electricity? Physics 15 provides the answers to all of these questions and more! This course explains the physics principles behind modern day technology, including motion, thermal physics, electricity and magnetism, waves, and modern physics. Learn how to solve problems and see what physical principles are behind issues facing the public today, such as the debate on global warming and sources of alternative energies. You will watch these principles at work in the laboratory and learn about the history of physics. SC

0033	MTWTH	10:15-12:20pm	SC2-227	Moore, R	6/12-7/20
------	-------	---------------	---------	----------	-----------

	MTWTH	12:30-2:35pm	SC2-226		
--	-------	--------------	---------	--	--

POLITICAL SCIENCE

POLSC-010 Introduction to American Government: Institutions and Ideals - 3 Units

ADVISORY: Eligibility for ENGL-100

LMC Degree: ADR: Social and Behavioral Sciences; DA

Transfer: UC; CSU Gen. Ed. Area D; IGETC Area 4H; C-ID POLS 110

An introduction to the institutions and historical development of American government, with special emphasis on the constitutional systems of the U.S. and the State of California. Partially fulfills the American Institutions graduation requirement at LMC and the CSU system. SC

0135	MTWTH	11:30-2:50pm	CO-102	Mubarak, R	6/12-7/6
------	-------	--------------	--------	------------	----------

Brentwood Center

9537	MTWTH	10:15-12:20pm	BRT-6	Archuleta, I	6/12-7/20
------	-------	---------------	-------	--------------	-----------

Online Course

0133		ONLINE		Duwe, M	6/12-7/20
------	--	--------	--	---------	-----------

This is an ONLINE section for 9 hours each week.

SEC	DAYS	HOURS	ROOM	INSTRUCTOR	DATES
-----	------	-------	------	------------	-------

PROCESS TECHNOLOGY

PTEC-180 Internship in Process Technology - .5-4 Units

PREREQUISITE: Approved online application and employer placement

ADVISORY: Eligibility for ENGL-095

LMC Degree: DA

Transfer: CSU

****Earn College Elective Credits While You Learn On-The-Job**!** An Occupational Work Experience Internship is for students who have declared a major, have taken classes in the major, and are ready for on-the-job experience in a paid or unpaid position. An internship involves working in a skilled or professional level assignment in the area of a student's vocational or academic major or field of interest. Students may earn up to 4 units per semester for a maximum of 16 units during community college attendance which may be applied as electives toward graduation. 12 units are transferable to CSU. A 30-hour/ .5 unit option is available for those participating in a college-approved job shadow and/or internship. SC

0302				Martin, J	6/12-7/20
------	--	--	--	-----------	-----------

NOTE: Students must submit an online Work Experience application and attend a mandatory Work Experience Orientation.

Go to www.losmedanos.edu/cwee for information.

PSYCHOLOGY

PSYCH-010 Individual and Social Processes - 3 Units

ADVISORY: Eligibility for ENGL-100

LMC Degree: ADR: Social and Behavioral Sciences; DA

Transfer: UC; CSU Gen. Ed. Area D; IGETC Area 4I

Learn about living in today's world. Topics in this course include stress, attraction, love and marriage, and how to cope more effectively with life events. This course is designed to explore the role that psychological factors play in behavior. Required for psychology majors. SC

0129	MTW	6:30-9:20pm	MA2-205	Gayton, L	6/12-7/19
------	-----	-------------	---------	-----------	-----------

Brentwood Center

9513	MTWTH	8:00-10:05am	BRT-3	De Anda, N	6/12-7/20
------	-------	--------------	-------	------------	-----------

PSYCH-011 General Psychology - 3 Units

ADVISORY: Eligibility for ENGL-100

LMC Degree: ADR: Social and Behavioral Sciences; DA

Transfer: UC; CSU Gen. Ed. Area D; IGETC Area 4I

Study the fascinating facts that describe, explain, and predict your behavior. Learn techniques to change behavior. This class explores the extensive role that psychological factors play in your life from a scientific perspective. Required for psychology majors. SC

0037	MTWTH	8:00-10:05am	MA2-206	Davi, E	6/12-7/20
------	-------	--------------	---------	---------	-----------

0036	MTWTH	10:15-12:20pm	MA2-206	Davi, E	6/12-7/20
------	-------	---------------	---------	---------	-----------

Brentwood Center

9523	MTW	3:30-6:20pm	BRT-12	Davi, E	6/12-7/19
------	-----	-------------	--------	---------	-----------

SEC	DAYS	HOURS	ROOM	INSTRUCTOR	DATES
-----	------	-------	------	------------	-------

RECORDING ARTS

RA-020 Recording Arts II - 3 Units

PREREQUISITE: RA-010

LMC Degree: DA

Transfer: CSU

Have you ever wondered what it would be like to record in a professionally designed studio? This course is designed to introduce you to the professional recording environment. You will learn about the design features of high-end recording systems. By the end of the course you will be getting hands-on experience operating an automated mixing console. This course is offered in the spring and summer. LR

0113 MW 5:30-9:50pm MU3-730 Shiner, R 6/12-7/19
+ 9 hours by arrangement each week.

RA-033 Summer Recording Workshop - 2.5 Units

PREREQUISITE: Prior or concurrent enrollment in RA-020

LMC Degree: DA

Transfer: CSU

LMC has two of the most impressive, professionally designed, and fully equipped studios in the Bay Area. Would you like hands-on training, in a professional environment? If so, then this course is for you. You will work as a member of recording teams and gain experience operating equipment in a variety of recording sessions. This is an advanced course, so make sure you've taken the prerequisites. SC

0114 TTH 5:30-9:50pm MU3-730 Shiner, R 6/13-7/20
+ 3 hours by arrangement each week.

SIGN LANGUAGE

SIGN-050 Elementary American Sign Language I - 5 Units

ADVISORY: Eligibility for ENGL-100

LMC Degree: DA

Transfer: UC, CSU GE Area C2

Do you want to begin or improve your American Sign Language skills, converse in American Sign Language with your friends and coworkers or transfer to a four-year university? American Sign Language 50 is a visual/finger/hand manipulative approach to comprehending and communicating in American Sign Language as it is used in the United States and understood in other English speaking communities and regions worldwide. The content used in learning the language is drawn from the rich deaf and hearing cultures in the United States. This is part one of a two part elementary American Sign Language program. It is highly recommended that upon successful completion of this course, SIGN-066 be taken the following semester. This course is equivalent to two years of high school American Sign Language. SC

Brentwood Center

9544 MTWTH 3:00-5:50pm BRT-10 Finnigan, J 6/12-8/3

SIGN-070 Fingerspelling I - .5 Unit

PREREQUISITE: SIGN-065 or equivalent

ADVISORY: Eligibility for ENGL-100

LMC Degree: DA

Transfer: CSU

Do you want to be able to sign using fingerspelling? This course will help you to both read fingerspelling and use fingerspelling to communicate. SC

0256 MTW 4:30-6:20pm CC3-336 Germany, J 6/19-7/5

SEC	DAYS	HOURS	ROOM	INSTRUCTOR	DATES
-----	------	-------	------	------------	-------

SIGN-071 Fingerspelling II - .5 Unit

PREREQUISITE: SIGN-070

ADVISORY: Eligibility for ENGL-100

LMC Degree: DA

Transfer: CSU

Do you want to improve your use of fingerspelling? This course will provide you with a continuation of learning how to read fingerspelling and communicate using fingerspelling. SC

0257 MTW 4:30-6:20pm CC3-336 Germany, J 7/10-7/26

SIGN-072 Deaf Culture - 3 Units

PREREQUISITE: SIGN-066 or equivalent

ADVISORY: Eligibility for ENGL-100

LMC Degree: DA

Transfer: UC, CSU

Would you like to learn about Deaf Culture and communicate better with Deaf individuals? This course will help you understand Deaf Culture and provide you with an introduction to the Deaf Culture as it applies to the historical, cultural and social experiences within our Deaf community. You will learn about and discuss current issues directly related to the Deaf including education and assimilation in bilingual/bicultural settings. You will gain a new perspective on how Deaf people interact with one another and the hearing community. Course Taught in American Sign Language. SC

0255 MTW 6:30-9:20pm CC3-336 Germany, J 6/19-7/26

SOCIOLOGY

SOCIO-015 Introduction to Sociology - 3 Units

ADVISORY: Eligibility for ENGL-100

LMC Degree: ADR: Social and Behavioral Sciences; DA

Transfer: UC; CSU Gen. Ed. Area D; IGETC Area 4J; C-ID SOCI 110

Join your fellow students in a journey through the land of sociology. See and hear the excitement of discovering culture, socialization, stratification, urbanization, race, and gender inequality. You can become a team member of an educational adventure that you will never forget. Required for Sociology majors. SC

4335 MTWTH 10:15-12:20pm CC2-213 Sample, A 6/12-7/20

Brentwood Center

9514 MTW 3:30-6:20pm BRT-5 Sample, A 6/12-7/19

SOCIO-016 Introduction to Social Problems - 3 Units

ADVISORY: Eligibility for ENGL-100

LMC Degree: ADR: Social and Behavioral Sciences; DA

Transfer: UC; CSU Gen. Ed. Area D; IGETC Area 4J; C-ID SOCI 115

I am inviting you to examine some of the most complex social problems in American society. Discussions will include wealth and poverty, the sex industry, drugs, crime, race and gender inequality. Social change starts with understanding the causes and the solutions to American social problems. Required for Sociology majors. SC

4336 MTWTH 12:30-2:35pm CC2-213 Sample, A 6/12-7/20

SPANISH

SEC	DAYS	HOURS	ROOM	INSTRUCTOR	DATES
-----	------	-------	------	------------	-------

SPANISH

SPAN-044 **Conversational Spanish I - 3 Units**

ADVISORY: Eligibility for ENGL-100

LMC Degree: DA

Transfer: CSU

Have you ever wanted to speak Spanish? This is the class for you! This introductory course will prepare you for the practical, daily use of Spanish at work, home and in your community. In addition to basic vocabulary, this course will cover oral language proficiency, grammar, idiomatic expressions and culture. Vocational Spanish language instruction will be the focus for some off-campus course offerings. Emphasis will be placed on practical Spanish for everyday use. SC

Brentwood Center

9546	MTW	11:30-2:20pm	BRT-3	Coronado Barraza, V	6/12-7/19
------	-----	--------------	-------	---------------------	-----------

SPAN-050 **Elementary Spanish I - 5 Units**

ADVISORY: Eligibility for ENGL-100

LMC Degree: DA

Transfer: UC; CSU Gen. Ed. Area C2; IGETC Area 6

Do you want to improve your Spanish skills, converse in Spanish with your friends and coworkers to transfer to a four-year university? Spanish 50 is a visual/oral/aural approach to comprehending, speaking, reading, and writing Spanish as it is used in Mexico, Central/South America, Spain, the Caribbean and the Southwestern United States. The content used in learning the language is drawn from the rich Mexican, Chicano, and Latino Afro-Caribbean cultures. This is part one of a two part elementary Spanish program. It is highly recommended that upon successful completion of this course, SPAN-051 be taken the following semester. This course is equivalent to two years of high school Spanish. SC

0269	MTWTH	11:30-2:20pm	SC1-132	Kline, F	6/12-8/3
------	-------	--------------	---------	----------	----------

5934	MT	6:30-9:20pm	CC2-296	Huffman, L	6/12-8/3
------	----	-------------	---------	------------	----------

This course is partially online. Students will have an additional 42 hours online.

SPAN-051 **Elementary Spanish II - 5 Units**

PREREQUISITE: SPAN-050 or 2 years of high school Spanish

ADVISORY: Eligibility for ENGL-100

LMC Degree: DA

Transfer: UC; CSU Gen. Ed. Area C2; IGETC Area 3B, 6

Continuation of the visual/oral/aural approach to understanding, speaking, reading, and writing Spanish. This is the second course of a four semester sequence. Course material emphasizes the cultures of Mexico, Central/South America, the Caribbean, Spain and the Chicano of the Southwestern United States. This course is equivalent to two years of high school Spanish. SC

Online Course

0270	ONLINE			Huffman, L	6/12-8/3
------	--------	--	--	------------	----------

This course is ONLINE except for the final proctored exam. Students must have computer capacity/capability for video web conferencing. Please note that class meets Wed. Aug. 2nd face to face for final exam or Thurs. Aug. 3rd for make up finals at the Los Medanos College Brentwood center. Email lhuffman@losmedanos.edu for syllabus prior to June 12th. Credit by exam is available for this course.

SPEECH/COMMUNICATIONS

SPCH-110 **Speech Communication - 3 Units**

ADVISORY: Eligibility for ENGL-100

LMC Degree: ADR: Arts and Humanities; DA

Transfer: UC; CSU Gen. Ed. Area A1; IGETC Area 1C; C-ID COMM 110

Develop skills toward being a more effective public speaker and a critical listener. Learn to be clear, focused, direct, and interesting in a variety of context. This is an introduction to basic concepts and principles of public speaking, including methods

SEC	DAYS	HOURS	ROOM	INSTRUCTOR	DATES
-----	------	-------	------	------------	-------

of obtaining and organizing material for clarity of thought and development of both imaginative and discursive modes of verbal and nonverbal expression. SC

0132	MTWTH	8:00-10:05am	CO-101	Rodolfo, S	6/12-7/20
------	-------	--------------	--------	------------	-----------

0131	MTWTH	10:15-12:20pm	CO-101	Rodolfo, S	6/12-7/20
------	-------	---------------	--------	------------	-----------

0130	MTW	6:30-9:20pm	CO-101	Feere, Z	6/12-7/20
------	-----	-------------	--------	----------	-----------

4471	MTWTH	8:00-11:20am	CO-102	Gardner, K	7/10-8/3
------	-------	--------------	--------	------------	----------

0125	MTWTH	11:30-2:50pm	CO-102	Gardner, K	7/10-8/3
------	-------	--------------	--------	------------	----------

Brentwood Center

9532	MTWTH	8:00-10:05am	BRT-2	Petersen, N	6/12-7/20
------	-------	--------------	-------	-------------	-----------

9509	MTWTH	10:15-12:20pm	BRT-2	Petersen, N	6/12-7/20
------	-------	---------------	-------	-------------	-----------

9541	MTWTH	12:30-2:35pm	BRT-2	Cross, E	6/12-7/20
------	-------	--------------	-------	----------	-----------

9511	MTWTH	3:00-5:05pm	BRT-2	Cross, E	6/12-7/20
------	-------	-------------	-------	----------	-----------

SUPERVISED TUTORING

SPTUT-020 **Supervised Tutoring - 0 Unit**

ADVISORY: Student must be referred by a counselor or instructor per Title 5, 58170(e)

LMC Degree: Non-Credit

Do you need a little help with your studies? Whether you are writing a term paper, studying for a math test or need to brush up on your child development skills you can get individualized tutoring from trained tutors in any one of the many labs at both the Pittsburg and Brentwood campuses. Ask your instructor or counselor for a referral to receive tutoring in basic skills, academic and vocational subject matter by enrolling in this free, non-credit course. P/NP

0208				Staff, L	5/27-8/3
------	--	--	--	----------	----------

Hours by arrangement: Center for Academic Support

0209				Staff, L	6/12-8/3
------	--	--	--	----------	----------

Hours by arrangement: Math Lab

9526				Staff, L	6/12-8/3
------	--	--	--	----------	----------

Hours by arrangement: Brentwood Center Math Lab

WELDING

WELD-015 **Basic Oxyacetylene Welding - 2 Units**

ADVISORY: WELD-010; eligibility for ENGL-095

LMC Degree: DA

Transfer: CSU

This course provides you with theoretical hands-on experience in learning how to use an oxyacetylene torch to weld and braze. You will learn how to manipulate a weld puddle and how to weld different metal joints in different positions. This process enhances your ability to learn and perform Gas Tungsten Arc Welding, which is another common form of welding. This is a required course for both a Certificate of Achievement and a Degree in Welding Technology. SC

5184	MTW	6:00-9:50pm	CC3-517	Meyer, J	6/5-7/12
------	-----	-------------	---------	----------	----------

WELD-016 **Advanced Oxyacetylene Welding - 1 Unit**

PREREQUISITE: WELD-015

ADVISORY: WELD-010; eligibility for ENGL-095

LMC Degree: DA

Transfer: CSU

Do you want to develop advanced welding skills? This course, a continuation of WELD 15, provides you with additional practical experience to weld & braze both ferrous and non-ferrous metals, plates, sheet metal, tubes and pipes. You will also learn how to use machine torches and cutting units. SC

5185	MTW	6:00-9:50pm	CC3-517	Meyer, J	6/5-7/12
------	-----	-------------	---------	----------	----------

Academic Scholarship Standards

Attendance

Students are expected to be punctual and attend all courses in which they are enrolled. Students may be dropped by the instructor for failure to attend class in the following circumstances:

1. Failure to attend first class meeting.
2. Absence from three consecutive weeks of instruction.
3. At any point when it is concluded that absences have irretrievably affected the student's progress in his/her course-work.

Grades should not be used as punishment for absences. However, academic grades may be lowered to the degree that instructors can estimate the loss of cognitive, affective, or skills learning due to student absences.

Grading

The evaluation in college-level courses is a prime responsibility of the instructor. Such evaluation involves the measurements of achievement against the objectives of the course and the assignment of a letter grade to denote the student's degree of success.

The grade, as submitted by the instructor, shall be considered final and permanent. Grades cannot be changed by submitting additional course work or taking examinations after the semester (or term) is completed. Under state law, the instructor's determination is final unless the grade given was the result of 1) mistake, 2) fraud, 3) bad faith, or 4) incompetency. (Ed. Code Section 76224.)

No grade may be challenged more than one year after the end of the session in which the grade was assigned. For information on the policy regarding grade challenges, contact the Office of Student Life.

Final Grades

Final grades can be accessed at the end of instruction, following instructor grade entry on-line.

Students can view their final grades by logging into WebAdvisor or Ellucian Go mobile app.

Evaluative Symbols Grading Scale

Symbol & Definition	Grade Points
A Excellent	4
B Good	3
C Satisfactory	2
D Passing, less than satisfactory	1
F Failing	0
P Pass (at least satisfactory — C or better — units awarded not counted in GPA)	
NP No Pass (less than satisfactory or failing — units not counted in GPA)	
W Indicates withdrawal from a course within the allowed time	
MW Military Withdrawal occurs when a student who is a member of an active or reserve US Military service receives orders compelling a withdrawal from courses	
I Incomplete — Academic work that is incomplete for unforeseeable emergency and justifiable reasons at the end of a term; student must be passing course to be eligible for incomplete. Student will not re-enroll in the course to complete pending assignments, projects or exams. A final grade is assigned when the work has been completed or after one year.	

Pass/No Pass Grade Option:

The purpose of the Pass/No Pass (P/NP) option is to allow students to take challenging courses while avoiding undue concern for their grade point averages. Students who select this option are, however, expected to complete the course, comply with attendance requirements, and comply with all other requirements of the course.

Selected courses have been labeled with "SC" to indicate student choice for the P/NP option. If students do not choose the P/NP option before the deadline, they will be issued a letter grade for the course. It is often best to discuss this choice with a counselor.

In order to exercise this option, a petition must be filed with the Admissions and Records Office at the time of registration or no later than the deadline listed for a full-semester class. Petitions for summer session and short-term courses must be filed within the first thirty percent of the course. **After the deadline has passed, the grading choice may not be reversed.**

Important information related to the P/NP option:

- A P grade represents a letter grade of A, B, or C
- A NP grade represents a letter grade of D or F
- Units earned on a P/NP basis will not be used to calculate grade point averages
- Units attempted for which NP is recorded will be considered in factoring probation and dismissal status
- Units earned on a P/NP basis will apply to the 60 units required for an associate degree
- Students should be aware that other colleges and universities may or may not limit the number of P units that will be accepted from transfer students.

Probation & Dismissal

Probation and dismissal status is based on coursework that is attempted and/or completed within the Contra Costa Community College District. Students should be aware that their academic standing is not based solely on units completed at Los Medanos College.

Categories of Probation & Dismissal

- **Probation 1 Status:** One (1) semester with cumulative GPA under 2.0 with 12 or more cumulative units attempted, and/or more than 50 percent of attempted courses resulting in a W, I, and/or NP.
- **Probation 2 Status:** Two (2) consecutive semesters with cumulative GPA under 2.0 with 12 or more cumulative units attempted, and/or more than 50 percent of attempted courses resulting in a W, I, and/or NP.
- **Dismissal Status:** Three (3) consecutive semesters with cumulative GPA under 2.0 with 12 or more cumulative units attempted, and/or more than 50 percent of attempted courses resulting in a W, I, and/or NP.

EFFECTIVE FALL 2016

Students will lose their Board of Governors Fee Waiver (BOGFW) upon two (2) consecutive semesters on probation and will need to appeal.

Notification of Probation and Dismissal

Students on Probation or Dismissal status are notified by the department of Student Success & Retention Programs as soon as possible, but not later than the end of the following term.

Students on Probation II and/or Academic Dismissal status are required to meet with a Student Success & Retention counselor.

Reinstatement for Academic Probation and Dismissal

A student on Probation I, II, or dismissal status will be required to complete the steps below prior to enrolling in courses. Requirements are based on students' respective status.

Probation I Status:

Step 1: Review notice of Probation I status emailed to InSite.4cd.edu address

Step 2: Complete online Probation I Workshop

Probation II Status:

Step 1: Review notice of Probation II status emailed to InSite.4cd.edu address

Step 2: Register and attend LMC Probation II Workshop (go to www.losmedanos.edu/counseling/workshops.asp)

Step 3: Earn a minimum term GPA 2.0 or better with no grade below C, including NP, I or W

Step 4: Submit Academic Progress Report (APR) by date specified to LMC Student Success & Retention Programs (SSRP). APR submission due dates—Spring: March 10, 2017 Summer 2017: June 29, 2017

NOTE: Students on Probation II will lose their registration priority but may appeal their registration date with Admissions & Records. Students will also lose their eligibility for the Board of Governors (BOG) Fee Waiver. For more information on how to complete an appeal please check in with the Financial Aid Office.

Based on student cumulative GPA, one or more semesters may be required to remove a student from Probation II status.

Dismissal Status:

Step 1: Review notice of dismissal status emailed to Insite.4cd.edu address

Step 2: Register online to meet with a Student Success & Retention Coordinator (SSRP) to begin the process for reinstatement (go to www.losmedanos.edu/counseling/workshops.asp).

Step 3: Complete additional requirements and submit supporting documents.

Step 4: Receive notification of Petition for Reinstatement Status (i.e. approved, denied, or pending) at Insite.4cd.edu address within 10 business days after submission of supporting documents.

Step 5: If reinstatement petition is granted, student may register for classes and must adhere to the following guidelines:

- Earn a minimum term GPA 2.0 or better with no grade below C, including no NP, I or W.
- Submit Academic Progress Report (APR) by date specified to LMC Student Retention and Support Services to maintain admissibility. APR submission due dates— Spring: March 10, 2017 Summer 2017: June 29, 2017

Students who fail to earn a term GPA 2.0 or better with no grade below a C, including an NP, I or W and/or fail to submit an APR will be dismissed for a period of one semester. Based on student cumulative GPA, one or more semesters may be required to remove student from dismissal status.

NOTE: Students on Dismissal will lose their registration priority but may appeal their registration date with Admission and Records, if their Hold Release petition is approved. Students will also lose their eligibility for the Board of Governors (BOG) Fee Waiver. For more information on how to complete an appeal please check in with the Financial Aid Office.

Course Repetition

Courses are not repeatable unless noted within the course descriptions listed in the catalog. Students may repeat a non-repeatable course only to alleviate a substandard grade of D, F or NC/NP.

Students are limited to enrolling in credit classes a maximum of three times. This includes students earning substandard grades or dropping with a "W." Students enrolling for a third time will be blocked from registration and required to submit a petition to repeat. Students are urged to manage course load and be aware of the number of enrollments for a specific course. Carefully consider dropping courses and understand all deadlines. Take advantage of tutoring and other support services to achieve successful completion of all courses.

When a course is repeated to alleviate a substandard grade, the previous grade will be disregarded in computing the student's grade point average. The substandard grade will remain on the student's transcript with a notation that the course has been repeated.

Courses that are repeatable are noted in the college catalog with the number of repeats allowed. Students may not repeat a course beyond the maximum repeats, even to alleviate substandard grades.

Course repetition cannot be used to make up an incomplete 'I' grade.

Withdrawals

- Students who have documented extenuating circumstances such as accidents, illness or other circumstances beyond the control of the student, may apply for a withdrawal after the 75 percent of the term (petition required).
- A "W" shall not be assigned if the student withdraws due to the impact of fire, flood or other extraordinary conditions (petition required).
- In the case of discriminatory treatment or retaliation for discriminatory treatment a "W" shall not be assigned.
- Active or reserve military students who receive orders compelling a withdrawal from courses will receive a military withdrawal which shall not be counted in the limit of withdrawals or progress probation.

Repeat of Biology Courses

Students who have received two substandard grades or 'W's or any combination in the same Biology 40, 45 or 50 course will be blocked from future enrollment in that course. Students may appeal the policy using the *Petition for Course Repetition* form.

Academic Renewal Policy

Based on the Academic Renewal Policy, substandard grades may be disregarded if they are not reflective of a student's demonstrated academic ability. If Academic Renewal is approved, the student's permanent record will be notated with appropriate comments and the substandard (D, F, NC/NP) unit values will not be computed in the cumulative grade point average. The "renewed" courses and the related grades will not be removed from the record, as the district is required to show a complete and accurate academic record for every student (Title 5, Section 55046). Students **MUST** meet with a counselor to review options for Academic Renewal, as this procedure is irreversible.

1. You may only utilize Academic Renewal one time within the District.
2. Only substandard grades will be renewed.
3. You must have completed 20 units of satisfactory work that has been completed within the Contra Costa Community College District or any other accredited college or university, since receiving the last substandard grade (the unit count begins the semester after the last substandard grade is received.) In-Progress semesters cannot be included.
4. If you have coursework from another college, you must provide an official transcript.
5. You must not have received any D's, F's or NC/NP since the substandard work (minimum 2.0 since substandard work).
6. Courses that have already been removed from GPA by course repetition cannot be reversed.
7. Academic Renewal cannot be reversed.
8. There is no minimum or maximum time limit (no waiting period since the substandard work).
9. A maximum of 24 units within the district may be renewed, however each college will make their own adjustments.
10. The processing time is 2 weeks.

Student Conduct and Discipline

Student conduct is governed by rules designed to preserve both individual and community freedoms. The individual student, in order to learn and grow, must enjoy freedom of expression and action. The academic community, if it is to properly serve the student, must enjoy freedom from disruption. Students enrolling in the

College assume an obligation to conduct themselves in a manner compatible with the College's function as an educational institution, and in accordance with the Student Code of Conduct.

Students shall conduct themselves consistent with the Student Code of Conduct while on campus or participating off campus in online or hybrid courses, or at college sponsored events or programs, including but not limited to field trips, student conferences, debate competitions, athletic contests, club-sponsored events, and international study programs, regardless of location. Students shall also conduct themselves consistent with the Student Code of Conduct in any matter related to school activity or attendance.

Misconduct that constitutes grounds for disciplinary action includes, but is not limited to:

1. Acts of academic dishonesty, including, but not limited to, cheating, tampering, fabrication, plagiarism, or assisting others in an act of academic dishonesty
2. Continued disruptive behavior, continued willful disobedience, habitual profanity, or vulgarity, or the open and persistent defiance of the authority of, or persistent abuse of, college personnel.
3. Assault, battery, or any threat of force or violence upon a student or college personnel.
4. Willful misconduct which results in injury or death to a student or college personnel or which results in cutting, defacing, or other injury to any real or personal property owned by the District.
5. The use, sale, or possession on campus of, or presence on campus under the influence of, alcohol, narcotics, other hallucinogenic drugs or substances, or any poison classified as such by Schedule D in Section 4160 of the Business and Professions Code.
6. Willful or persistent smoking in any area where smoking has been prohibited by law or by regulation of the Governing Board.
7. Persistent, serious misconduct where other means of correction have failed to bring about proper conduct.
8. Dishonesty, such as lying, or knowingly furnishing false information to the College.

9. Forgery, alteration, or misuse of College documents, records, or identification.
10. Theft or damage to property of the College, of members of the college community or of college visitors.
11. Unauthorized entry to or use of college facilities.
12. Violation of College policies or regulations, including regulations concerning the formation and registration of student organizations; the use of college facilities; or the time, place and manner of public expression.
13. Gambling on College property.
14. Conduct off campus inimical to the welfare and well-being of the College community.

For a complete copy of the Student Code of Conduct, which includes additional information, call 925-473-7424, or visit the college website at: www.losmedanos.edu/studentcodeofconduct/

Student Right-To-Know Reports

In compliance with the Student Right-to-Know and Campus Security Act of 1990 (Public Law 101-542), it is the policy of the Contra Costa Community College District and Los Medanos College to make the following information available:

- The completion or graduation rates of certificate or degree-seeking, first-time, full-time students beginning Fall 2012 and annually thereafter. Based on a cohort of first-time, full-time freshman with a declared program of study, 31.21% attained a certificate or degree or became 'transfer prepared' during a three-year period, from Fall 2012 to Spring 2015. Based on the cohort of first-time freshmen with a declared program of study, 8.55% transferred to another public institution in California (UC, CSU, or other California Community College) prior to attaining a degree or certificate or becoming "transfer-prepared" during a three-year period, from Spring 2013 to Spring 2015.
- Annual reports of criminal activity on campus and procedures for prevention of campus crime, as required by the Crime Awareness and Campus Security Act of 1991. This information is available, on request, from the campus Police Services Office or the LMC website under Campus Police.

Enrollment and Degree Verifications

Enrollment and Degree Verifications can now be done online through the National Student Clearinghouse. To obtain a free copy of your official verification of enrollment (24 hours a day, 7 days a week), go to (www.losmedanos.edu). Log onto inSite/WebAdvisor and click on “Enrollment Verification” where you can obtain this free service.

If an organization needs to verify your enrollment or degree and will not accept your printed copy, refer them to: National Student Clearinghouse, 13353 Sunrise Valley Drive, Suite 300, Herndon, VA 20171, Web: (www.studentclearinghouse.org), E-mail: service@studentclearinghouse.org, Phone: (703) 742-4200, Fax: (703) 742-4239. Your enrollment information is sent to the Clearinghouse three times each semester. Rush requests from the Admissions and Records office will be processed in 24 hours for \$5. Standard service is \$2 and will be processed in 3-4 business days.

Los Medanos College Campus Policies

Non-Discrimination Policy

It is the policy of the Contra Costa Community College District and Los Medanos College to provide an educational and employment environment in which no person shall be unlawfully subject to discrimination on the basis of ethnic group identification, national origin, religion, age, sex, sexual orientation, gender, race, color, medical condition, ancestry, marital status, physical or mental disability, or based on association with a person or group with one or more of these actual or perceived characteristics. This holds true for all students who are interested in participating in educational programs and/or extracurricular activities. Unlawful harassment, discrimination or denial of access of any employee/student with regard to ethnic group identification, national origin, religion, age, sex, race, color, ancestry, sexual orientation, or physical or mental disability is strictly prohibited. The lack of English language skills will not be a barrier to admission and participation in the college's education programs.

Inquiries regarding compliance and/or grievance procedures may be directed to the Los Medanos College Title IX Officer and Section 504/ADA Coordinator:

Contact: Gail Newman,
Senior Dean, Student Services

Email: gnewman@losmedanos.edu

Phone: (925) 473-7421

Requests for the elevation and addition of sports may also be directed to Gail Newman.

Inquiries/Complaint Procedures

Informal Procedure

Students who have questions about the procedures to file a complaint of unlawful discrimination or feel they have been discriminated against, may contact the local Title IX coordinator, the Senior Dean of Student Services, Gail Newman, by calling (925) 473-7421. The Senior Dean may work with the student-complainant, respondent, and other appropriate college personnel to attempt an informal resolution. The President, or designee, will monitor the informal complainant process and any proposed resolution. The process will be completed within 30 calendar days of receiving the complaint. A record of the complaint and resolution will be kept.

Formal Procedure

Students also have the right to submit an unlawful discrimination complaint through a formal procedure. The Senior Dean will provide students with the District complaint form and forward the completed form to the District Vice Chancellor Human Resources.

Upon receipt of a formal complaint, the District will immediately notify the State Chancellor's Office. Within 10 calendar days of receipt, the District shall commence an investigation of the complaint and notify the complainant. The District has 90 calendar days in which to investigate the complaint and report the administrative findings to the complainant and the State Chancellor's Office. The complainant may appeal the administrative determination to the District Governing Board within 15 calendar days of notice of such determination. The District Governing Board has 45

calendar days in which to act on the appeal. Failure of the Board to act within the 45 days denotes approval of the administrative determination. The complainant has the right to file a written appeal with the State Chancellor's Office within 30 calendar days after the Governing Board issues the final District decision or permits the administrative decision to become final pursuant to the above. The Chancellor has discretion to accept or reject any such petition for review in employment discrimination cases.

Students may also contact the Office for Civil Rights at the following address: Office for Civil Rights, San Francisco Office U.S. Department of Education Old Federal Building 50 United Nations Plaza, Room 239 San Francisco, CA 94102-4102 Telephone: (415) 556-4275; Fax: (415) 437-7783 TDD: (415) 437-7786; Email: OCR.SanFrancisco@ed.gov

Inquiries/Complaints on Basis of Disability

Inquiries regarding access, treatment, or employment on the basis of disability, should be directed to the Senior Dean of Student Services/ADA Coordinator, Los Medanos College, 2700 East Leland Rd., Pittsburg, CA 94565, (925) 473-7421, or TDD (925) 439-5709.

Reglamento de no Discriminación

El Distrito de Colegios Comunitarios del Condado de Contra Costa y el Los Medanos College están comprometidos a ofrecer igualdad de oportunidad en sus programas educacionales y vida estudiantil. El colegio no discrimina ni apoya la discriminación por cuestiones de origen étnico, edad, sexo, discapacidad física o mental, color, nacionalidad de origen, religión, orientación sexual, estatus de veterano, o condición médica, para el acceso a y trato de cualquiera de sus programas o actividades colegiales. La falta de conocimiento del idioma inglés no serán una barrera para la admisión y participación en los programas educativos vocacionales de la institución.

Este reglamento cumple con lo estipulado en el Título VI del Acta de 1964 de la Ley de Derecho Civil, con referencia a la discriminación por raza, color, o nacionalidad de origen; el Título IX de las Enmiendas a la Educación de 1972, referente a la discriminación por sexo; la Sección 504 del Acta de Rehabilitación de 1973, referente a la discriminación por discapacidad; el Acta de Discriminación de Edad de 1975 referente a la discriminación por edad; y el Reglamento del Distrito que aplica.

Contacte: Gail Newman,
Decano de Servicios
Estudiantiles

Correo electrónico:
gnewman@losmedanos.edu

Teléfono: (925) 473-7421

Procedimientos de Quejas

Procedimiento Informal

Los estudiantes que tengan preguntas sobre el procedimiento para someter una queja de conducta discriminatoria o creen haber sido víctimas de una acción discriminatoria pueden notificar a la Coordinadora Local del Título IX, o a el Decano de Servicios Estudiantiles. Contacte: Gail Newman, Decano de Servicios Estudiantiles, teléfono: (925) 439-2181, extensión 3372. El estudiante tiene la opción de seguir el procedimiento informal con el Decano de Servicios Estudiantiles quien pudiera facilitar una solución informal a la queja

con el personal apropiado del colegio y el alumno demandante. El Presidente del colegio, o persona asignada, vigilarán el proceso de resolución de la queja informal y propondrán una solución a la queja. El proceso de resolución no deberá durar más de 30 días después de haberse recibido la queja. Se mantendrá un expediente de la queja y la resolución en los archivos correspondientes.

Procedimiento Formal

Estudiantes tienen el derecho de someter una queja de conducta discriminatoria por un procedimiento formal. La Administración Superior proporcionará al alumno con el formulario de quejas del Distrito y enviará el documento al Vice Canciller de Relaciones Humanas del Distrito una vez que este haya sido llenado. Una vez que se haya recibido la queja de manera formal, el Distrito notificará inmediatamente a la Oficina del Canciller del Estado. Dentro de los 10 días siguientes de haberse recibido la queja, el Distrito deberá comenzar una investigación formal y notificar de ello al alumno demandante. El Distrito contará con 90 días para investigar la queja y reportar los resultados administrativos al demandante y a la Oficina del Canciller del Estado. El demandante tendrá derecho a

apelar la decisión administrativa al Consejo Gubernamental del Distrito dentro de los 15 días siguientes a la fecha de notificación de la decisión. El Consejo Gubernamental del Distrito contará con 45 días para actuar sobre la apelación. La falta de actuación del Consejo dentro de los siguientes 45 días otorgados indicará la aprobación de la decisión administrativa tomada. El demandante tendrá derecho a someter una apelación por escrito a la Oficina del Canciller dentro de los 30 días siguientes de que el Consejo Gubernamental haya emitido la decisión final del Distrito, o, permitirá que la decisión administrativa sea final conforme a lo anterior. El Canciller tendrá la autoridad de aceptar o rechazar cualquier petición semejante en la revisión de casos de discriminación laboral.

Preguntas, Quejas a Base de Incapacidad

Las preguntas sobre el acceso, trato, o empleo de personas discapacitadas deberán ser dirigidas al Decano de Servicios para los Estudiantes/Coordinador de ADA de Los Medanos College; 2700 East Leland Rd., Pittsburg, CA 94565, (925) 473-7421, o, al TDD (925) 439-5709.

FEDERAL WORK STUDY STUDENTS

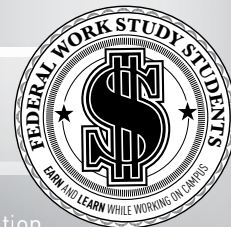
EARN and LEARN while working on campus



Benefits of the federal work study program:

- ✧ Flexible schedules available that work around your class schedule
- ✧ Marketable skills/added work experience
- ✧ Ongoing professional development and support
- ✧ Competitive pay range

See your **Financial Aid Coordinator** or **Federal Work Study Coordinator** for more information



HIGH SCHOOL SENIOR SATURDAY

Get off to the right start at LMC.

Learn how to navigate your way through the many services, procedures, programs and facilities designed to support

YOUR SUCCESS.

Whether you
plan to:



**LMC is your
pathway to
success.**

The days activities include:

- Tours
- Lunch
- Entertainment
- Give aways
- Opportunity to meet new classmates

Saturday, April 22, or Saturday, April 29

9:00 a.m. - 1:30 p.m.

(Check-in time begins at 8:30 a.m.)

————— Sign up @ —————
www.losmedanos.edu/highschool

Take advantage of Senior Saturdays and
qualify for early registration dates.

▶ If you miss these dates,
visit www.losmedanos.edu/highschool
to sign up for an Ed Planning workshop.

▶ If you have not completed an assessment,
go to www.losmedanos.edu/assessment.

MESA HONORS LMCAS



MESA Program

Math, Engineering and Science Achievement Program

www.losmedanos.edu/mesa

Especially for students headed to transfer as majors in math-based fields



Honors Transfer Program

www.losmedanos.edu/honors

Provides its high-achieving members an enhanced academic experience



LMCAS

LMC Associated Students

www.losmedanos.edu/lmcas

LMC's official student government provides programs and services designed to meet the varied needs of the college's students including events, activities, club supports and representation

SUCCESS STARTS AT LMC!

Exemplary programs provide the key to success for many of our students.

Transfer Academy

www.losmedanos.edu/transferacademy

Supporting students as they prepare their foundation for transferring to a 4-year school



Puente Program

www.losmedanos.edu/puente

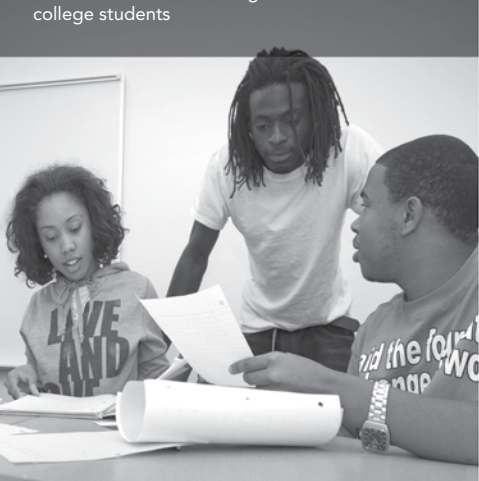
Focused on success for underrepresented students with English and counseling support



Umoja Program

www.losmedanos.edu/umoja

Committed to fostering and enriching the education experience of all students, especially African American and 1st generation college students



TRANSFER ACADEMY PUENTE UMOJA

College Parking Information

Parking All vehicles parked on the campus, whether in a parking lot, dirt lot, or perimeter road (Miwok Way and Los Medanos Drive) must have a valid parking permit. Be aware that there are specified student parking areas and faculty/staff parking areas. Students who park in faculty/staff spaces will be ticketed.

Fees Students may purchase a parking permit, valid for one semester. The cost is \$48.00 for automobiles and \$30.00 for motorcycles or mopeds. Full-term permits can now be purchased online through WebAdvisor. Students may now purchase a mid-term parking permit beginning April 3, 2017. The cost for automobiles is \$25.00 and \$15.00 for motorcycles or mopeds. Permits are no longer available for purchase on campus. If you prefer to pay cash for your permit, you can order it on the computer kiosk outside of the Cashier's Office and then pay at the Cashier's window. EOPS students can order their permits at the kiosk located in the EOPS Office.

Upon payment, you will be emailed a 15-day temporary parking permit than can be printed out and used until the permanent parking permit arrives at your home in two to three business days. Your permit is valid at any campus parking lot in the district. Daily parking permits may be purchased from the yellow ticket vending machines for \$3.00. These machines are located in Lot A, Lot 1A, Lot B, Lot C and the perimeter road adjacent to the softball fields.

BOGFW recipients may qualify for discounted parking if BOGFW is applied before purchasing parking.

Disabled Parking Special parking spaces are designated for disabled persons who have a DMV placard. Disabled persons with permits may park in any legal space on campus. The van accessible spaces are for wheelchair persons only.

Enforcement Parking regulations are enforced 7:00 a.m. Monday through 5:00 p.m. on Friday. After 5:00 p.m. daily, students may park in the staff parking spaces in lot A and C. Parking regulations are not enforced on weekends or holidays. Meters are enforced at all times.

Payment of fines Citations for parking violations are issued by the Campus Police. Payment of fines must be made to:

Citation Processing Center

IPARQ

P.O. Box 60309

San Diego, CA 92166

For questions, call (510) 423-7275

REMEMBER: TO AVOID A CITATION YOUR PERMIT MUST BE VISIBLE AT ALL TIMES WHILE PARKED ON CAMPUS.

For more information, please visit our website:

www.losmedanos.thepermitstore.com

Transportation to get you here.

Buses LMC is served by frequent Tri Delta Transit buses to Pittsburg/Bay Point BART and local communities. The general public cash fare is currently \$2.00 or \$3.75 for a local day pass. Bus routes 380, 387, 388 & 391 serve LMC weekdays and routes 392, 393 & 394 serve LMC on weekends and holidays.* Bus service to the Brentwood Center can be accessed by route 391 and 393 from Pittsburg, Antioch, and Oakley.

The Tri Delta Transit web site also offers a "Trip Planner" link where you can enter origin and destination and the web site will provide you with transit options and times.

For more information, please visit: www.trideltatransit.com. Or call Tri Delta Transit at: (925) 754-6622.

*In addition, Tri Delta Transit offers discounts monthly and value passes.

www.trideltatransit.com

BART Tri Delta Transit Buses connect LMC to BART, which services Pittsburg, Concord, Pleasant Hill, Walnut Creek and other cities throughout the Bay Area. For specific Tri Delta Transit buses that service Los Medanos College, please see "Buses", or call BART at: (925) 676-2278 (BART)

Carpooling A healthier and faster commute option with 9 miles of High Occupancy Vehicle lanes on Highway 4, between Port Chicago Highway and Railroad Avenue.

Bicycle Secure bike racks are available at various locations on campus. Bikes can be transported by BART or bus as well. See the above numbers for more information.

The De Anza bike trail intersects the south end of the Los Medanos College campus. The bike trail can be accessed from the west of LMC at Leland, Crestview Drive Railroad Avenue, Harbor Street, Loveridge Road. The bike trail can be accessed from the east of LMC at Somersville Road, Delta Fair Blvd, Gentry Town Drive and James Donlon Boulevard.

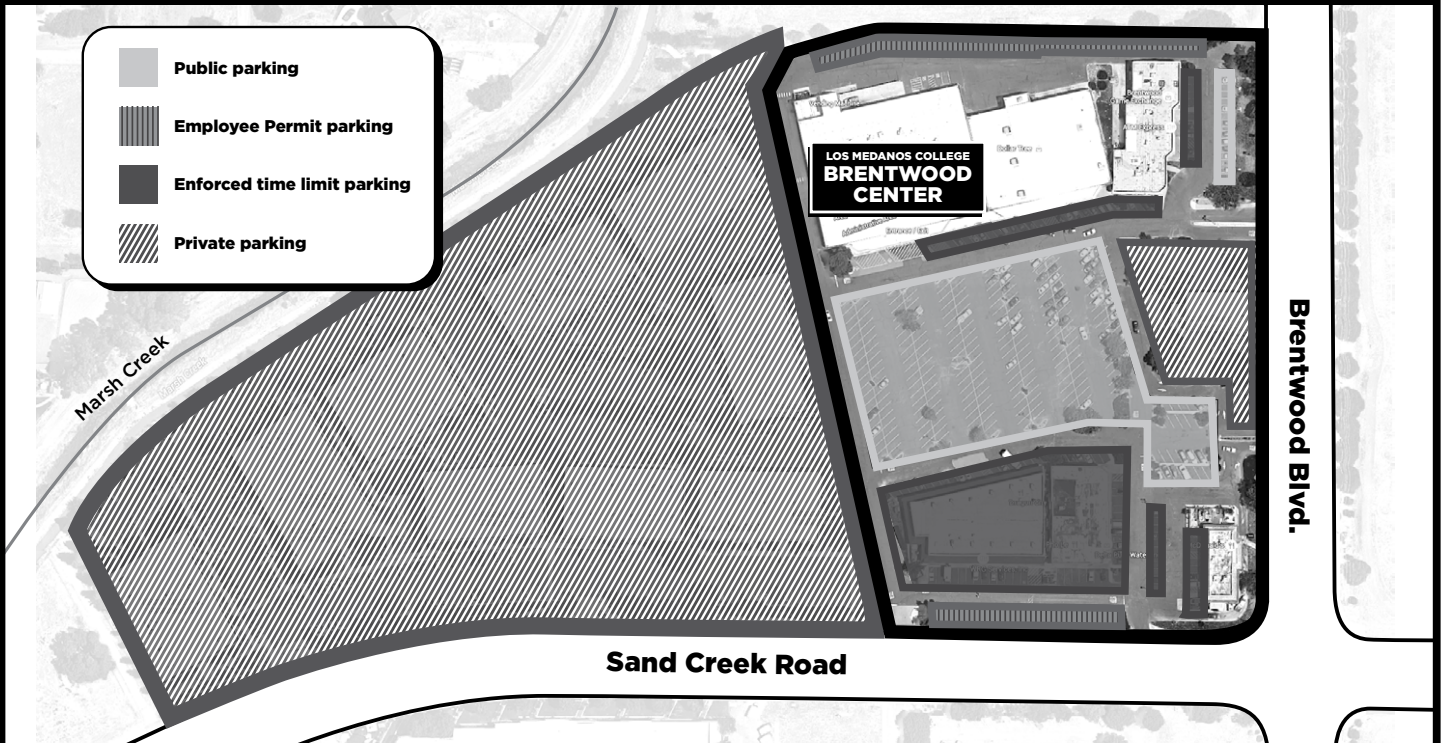
The Marsh Creek bike trail borders the northwest side of the Brentwood Center. The bike trail can be accessed by following the parking lot behind the campus and from Sand Creek Road. Free trail maps: www.511contracosta.org or (925) 969-0841.

511 Contra Costa 511 Contra Costa provides commuter services and programs to eligible college students traveling to, through, or from Contra Costa County. Programs are available to students who are willing to carpool, ride transit, bike, and walk instead of driving alone to campus.

511 Contra Costa commute programs are provided free of charge to residents, college commuters, and employers in Contra Costa County on a first-come, first-serve basis while funding is available. Funds for these programs are provided by the Bay Area Air Quality Management District's Transportation Fund for Clean Air and the Contra Costa Transportation Authority.

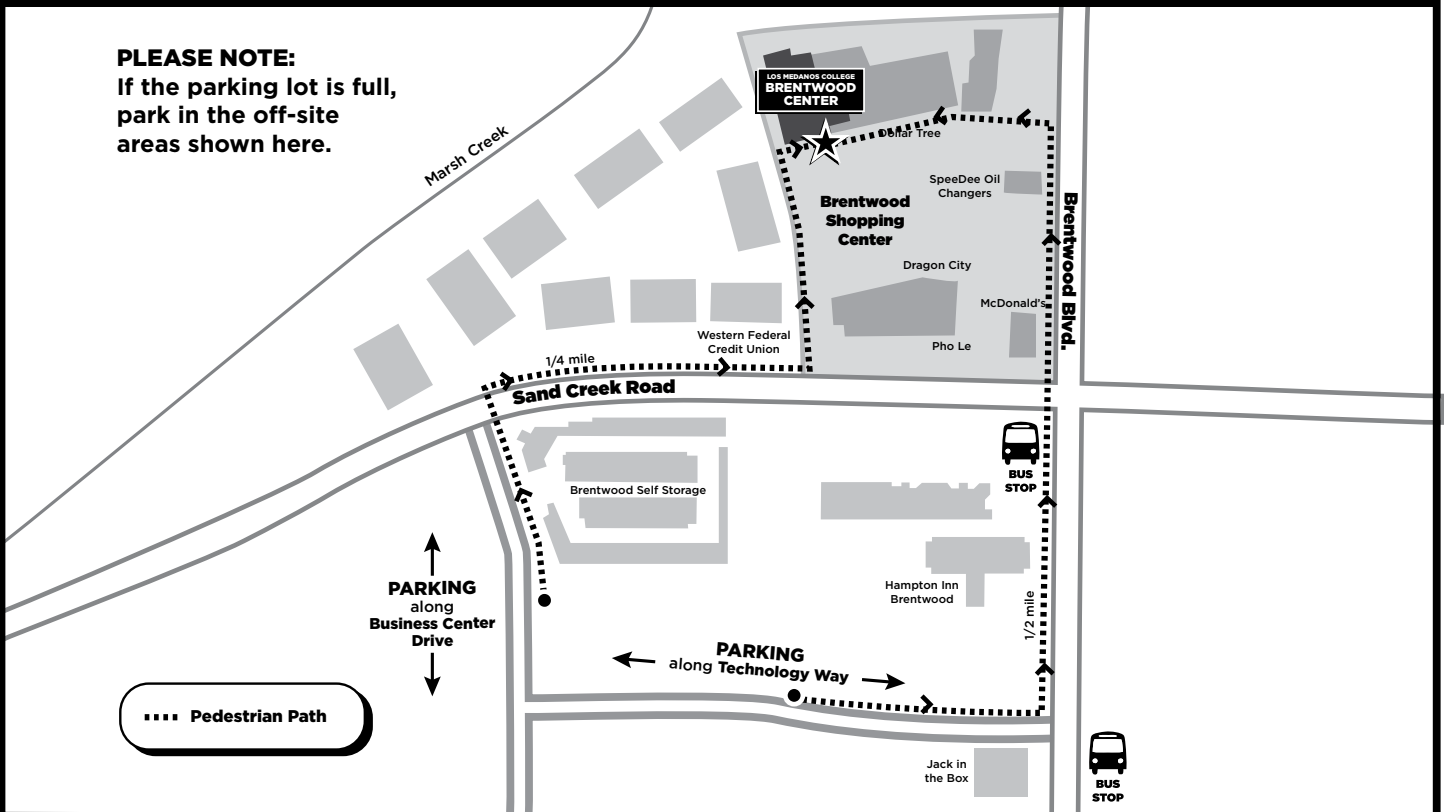
Visit www.511contracosta.org for more information or by calling (925) 969-0841.

PARKING AND THE BRENTWOOD CENTER



ALTERNATE PARKING AND BUS STOPS

PLEASE NOTE:
If the parking lot is full, park in the off-site areas shown here.



Crime Awareness

Criminal activity can be greatly reduced by preventative efforts. Take steps to protect your possessions and discourage theft.

Federal law requires that crime prevention techniques and statistics be reported annually to the campus community. This report meets all requirements as set forth in the Crime Awareness and Campus Security Act of 1991. This data was prepared not only to comply with the law, but to help keep our students, faculty and staff safe and secure and to provide an environment supportive of teaching and learning.

You are encouraged, as a member of the campus community, to report suspicious circumstances or any criminal acts committed on district properties.

The District, through its Police Services Department is committed to fully investigate reports of criminal acts occurring on district properties.

At Los Medanos College, crimes may be reported by calling Police Services at **(925) 473-7333** or by visiting the Police Services Department on the ground floor of the College Complex.

In addition to police services, the College District provides:

Escort service upon request:

Call Police Services at **(925) 473-7332** for an escort between offices or to a parking lot.

First aid-CPR service

Police officers and some police aides are trained in CPR and First Aid. Call **(925) 473-7332** or, in an emergency, **(925) 473-7333**.

Safety and crime prevention pamphlets

Available at the Police Services offices.

Parking permits

A parking permit is required when parked on campus (except holidays and weekends). To avoid a ticket, the parking permit must be visible at all times.

Police services office hours:

Monday – Thursday
7:30 a.m. – 10:30 p.m.

Friday
7:30 a.m. – 4:30 p.m.

Saturday
7:30 a.m. – 3:30 p.m.

To contact an officer after business hours, call the Sheriff's Department at (925) 646-2441.

LOS MEDANOS CAMPUS CRIME STATISTICS

Crime Reported	2012		2013		2014	
	AO*	HO**	AO*	HO**	AO*	HO**
Murder & Non-negligent Manslaughter	0	0	0	0	0	0
Negligent Manslaughter	0	0	0	0	0	0
Forcible Sex Offenses	0	0	0	0	0	0
Robbery	2	0	1	0	2	0
Aggravated Assault	0	0	0	0	0	0
Burglary	5	0	22	0	13	0
Theft	57	0	39	0	45	0
Motor Vehicle Theft	8	0	6	0	7	0
Arson	0	0	0	0	0	0
Domestic Violence	-	-	2	-	0	0
Stalking	-	-	0	-	0	0
TOTALS	72	0	70	0	67	0

BRENTWOOD CENTER CRIME STATISTICS

Crime Reported	2012		2013		2014	
	AO*	HO**	AO*	HO**	AO*	HO**
Murder & Non-negligent Manslaughter	0	0	0	0	0	0
Negligent Manslaughter	0	0	0	0	0	0
Forcible Sex Offenses	0	0	0	0	0	0
Robbery	1	0	0	0	0	0
Aggravated Assault	0	0	0	0	0	0
Burglary	2	0	0	0	1	0
Theft	0	0	0	0	0	0
Motor Vehicle Theft	0	0	0	0	1	0
Arson	0	0	0	0	0	0
Domestic Violence	-	-	-	-	0	0
Stalking	-	-	-	-	0	0
TOTALS	3	0	0	0	2	0

*AO - Actual Offenses

**HO - Hate Offenses - Number of crimes (homicide, rape, assault) that manifest evidence of prejudice based on race, religion, sexual orientation or ethnicity.

NOTE - Domestic violence and stalking - STATS were mandated after 2012

FOR EMERGENCIES ONLY

Call ext. 3-7333 or 9-911 from campus phones.

Note: to secure an outside line, necessary for dialing 911, you must first dial 9 on a campus phone.

DIAL 911 FROM OTHER PHONES

(Pay phones DO NOT charge for 911 calls)

DISTRICT WIDE MISCELLANEOUS ARRESTS

Crime	2012	2013	2014
Liquor Laws	0	0	7
Drugs	10	11	23
Weapons	4	5	5

Los Medanos Campus Directory

PITTSBURG CAMPUS (925) 439-2181
 TDD (Hearing impaired phone)..... (925) 439-5709
BRENTWOOD CENTER..... (925) 513-1625



DEPARTMENT	LOCATION	PHONE	DEPARTMENT	PHONE
Admissions & Records Office	SS3-301	473-7500	INSTRUCTIONAL LABS	
Assessment Center	SS3-314	473-7431	Appliance	473-7737
Athletic Programs		473-7605	Art	473-7819
Bookstore	CC3-810	473-7543 or 439-2056	Automotive	473-7741
Brentwood Center		513-1625	Biology	473-7695
CalWORKs/CARE office	SS4-417	473-7482	Business	473-7787
Cashier's and Payment Office	SS3-308	473-7502	Computer	473-7788
Center for Academic Support	CO-300	473-7590	English	473-7870
Child Study Center		473-7640	ETEC	473-7726
Cooperative Work Experience Education & Workforce Development Programs	CO-400	473-7415/ 473-7417	Journalism	473-7827/473-7830
Counseling Appointments	SS4-400	473-7449	Math Tutorial/Math Lab	Voicemail 473-7665
Disabled Support Services • Learning/Physical (TDD Phone Hearing impaired)	SS3-321	473-7471 439-5709	MIDI (Music)	473-7813
EOPS: Extended Opportunity Programs & Services	SS4-414	473-7480/ 473-7483	INSTRUCTIONAL DEANS' OFFICES	
Financial Aid	SS3-309	473-7525	Liberal Arts	473-7408/473-7409
Foundation Office	CO-404	473-7315	Math & Sciences	473-7408/473-7409
Library Services	L-117	473-7570/ 473-7575	Career Technical Education and Social Sciences	473-7408/473-7409
Lost and Found/Police Services	CC1-132	473-7332	Individual instructors may be contacted at their campus phone extensions.	
New Student Workshops	SS3-320	473-7434	STUDENT SERVICES DEANS' OFFICES	
Police Services/Lost & Found Emergency Line	CC1-132	473-7332 473-3333	Dean of Counseling & Student Support	473-7426
Scholarship Information	SS3-309	473-7518	Dean of Student Success	473-7424
Student Government/Activities	GA Building	473-7554	Senior Dean, Student Services	473-7421
Student Outreach	SS3-320	473-7430		
Student Retention & Support	SS3-419	473-7483		
Transfer & Career Services	SS4-435	473-7444 or 473-7443		
• Employment Center On Campus Job Placement		473-7515		
Veterans Benefits	SS3-301	473-7496		
Veterans Resource Center	CC-821	473-7511		
Welcome Center	SS3-331	473-7439		
Welcome Desk	SS3-320	473-7434		



LMC BOOKSTORE
 (925) 439-2056

BEST PRICES, QUALITY SERVICE

FOR ALL YOUR CAMPUS NEEDS

New, used and rental textbook, college catalog & schedule, calculators, recorders, electronics & batteries, gifts, cards, snacks, school supplies and LMC clothing

Summer Store Hours

Monday-Thursday 7:45am - 5:00pm
 Friday Closed

We accept cash, Visa and Mastercard.
 Personal checks are not accepted.
 ATM located in bookstore.

Bookstore profits support students!

www.losmedanos.edu/bookstore



NOTE: These are NEW phone numbers
 Visit www.losmedanos.edu/directory for entire directory.

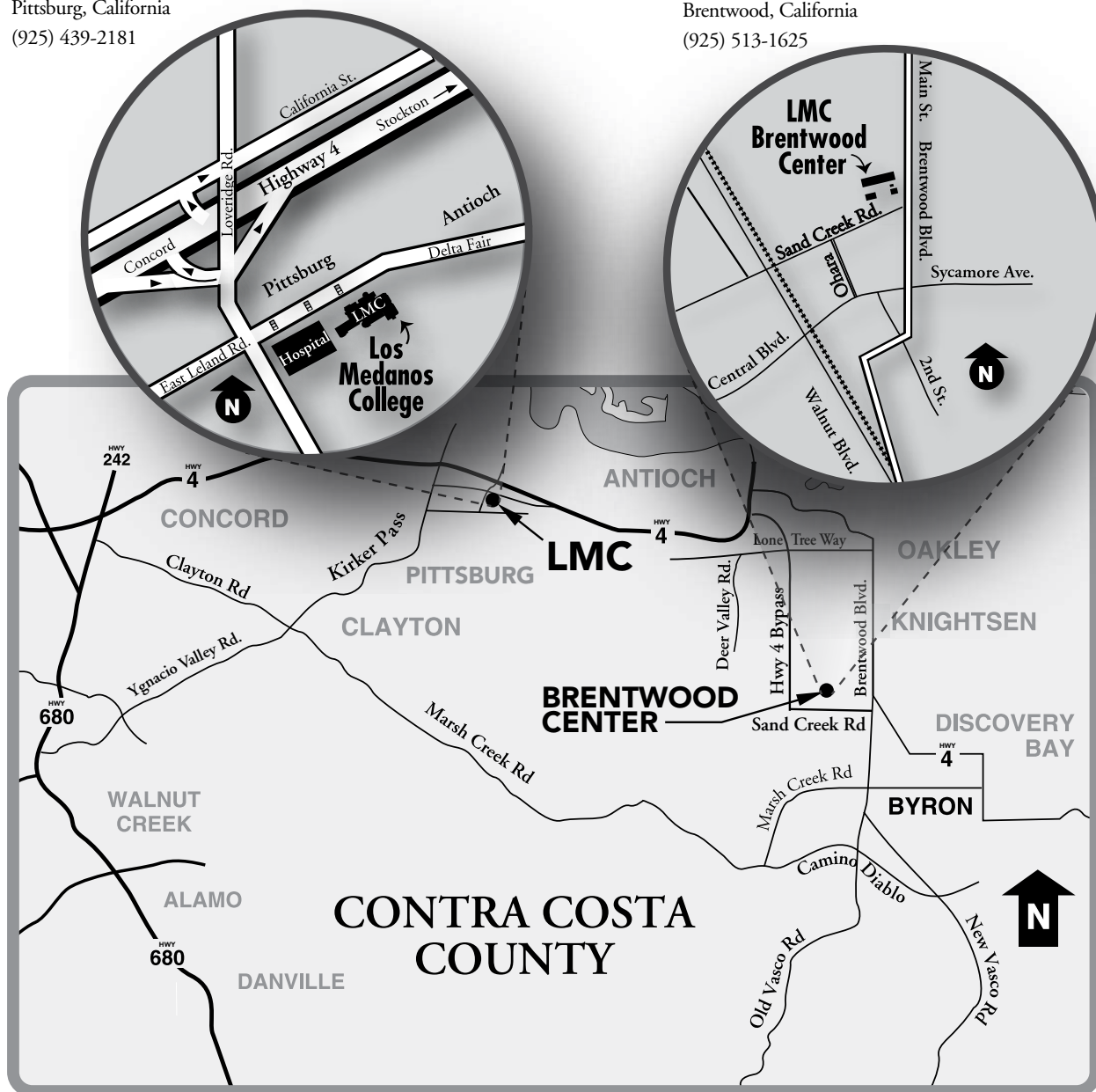
Directions to Los Medanos College

LOS MEDANOS COLLEGE

2700 East Leland Road
Pittsburg, California
(925) 439-2181

BRENTWOOD CENTER

101A Sand Creek Road
Brentwood, California
(925) 513-1625



VISIT US
www.losmedanos.edu



Use this QR code to access
the maps link using your
smart phone.

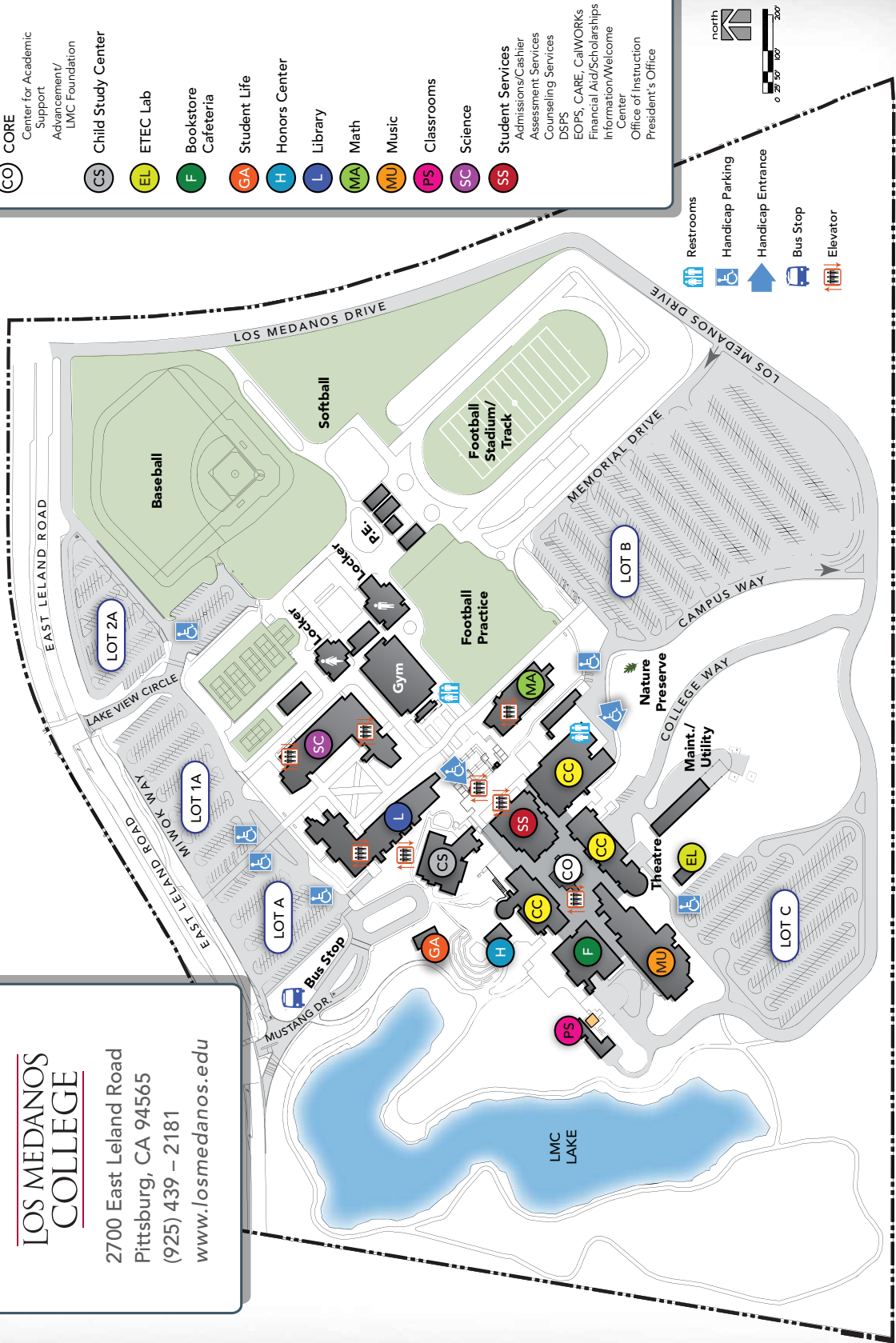
Campus Overview

LOS MEDANOS COLLEGE

2700 East Leland Road
 Pittsburg, CA 94565
 (925) 439 - 2181
www.losmedanos.edu

Building Legend

- CC College Complex
- CO CORE
- CS Center for Academic Support Advancement/ LMC Foundation
- CS Child Study Center
- EL ETEC Lab
- F Bookstore Cafeteria
- GA Student Life
- H Honors Center
- L Library
- MA Math
- MU Music
- PS Classrooms
- SC Science
- SS Student Services
 Admissions/Cashier
 Assessment Services
 Counseling Services
 DSPS
 EOPS, CARE, CalWORKS
 Financial Aid/Scholarships
 Information/Welcome
 Center
 Office of Instruction
 President's Office



Smoking restricted to parking lot areas.

Summer

LOS MEDANOS COLLEGE

PITTSBURG CAMPUS

2700 East Leland Road, Pittsburg, CA 94565 (925) 439-2181

BRENTWOOD CENTER

101A Sand Creek Road, Brentwood, CA 94513 (925) 513-1625

www.losmedanos.edu

