

**“Can You See Yourself  
Doing Research This Summer?”**

**A Selected listing of Summer Research and Enrichment Programs  
for Undergraduates in STEM Majors**

Summer 2012



Dear MESA Student,

Congratulations on your desire to pursue a degree in a STEM Discipline. STEM or Science, Technology, Engineering, and Math degrees are considered by many to be the most difficult to pursue yet most will agree that they are among the most satisfying and can be the most lucrative. As you are probably already aware, your major will require more critical thinking skills, study time, more units, and more time in college. Summer Research and/or Summer Enrichment Programs are an excellent way to gain hands on research experience to prepare for graduate school and the world of academia in the scientific community. Therefore, I encourage you to peruse the programs listed and apply to more than one in case your top pick is not available. Also please encourage your fellow MESA Students to also apply because today's classmates will be tomorrow's colleagues. Good Luck!

Tiffany S. Reardon  
Assistant Director of Programs  
MESA Statewide Office

Want more information about Scholarships and Internship Opportunities?

Add "MESA Statewide" as a friend on

facebook

<http://www.facebook.com/#!/mesa.statewide>

### **Important Tips for Successful Applications:**

- 1) Apply only to programs that you are eligible for.
- 2) If you have any uncertainties about applying for the program e-mail the contact person before you apply to the program.
- 3) Once you've submitted your application you may want to e-mail the program coordinate to let him/her know that you've applied.
- 4) Meet all the Deadlines posted.
- 5) Make sure to give your recommender(s) adequate time to write a polished letter of recommendation for you. Give them as much information as possible about you, the program you are applying to and how you see this program as beneficial to your academic and career goals.
- 6) If possible, send your recommender a copy of your resume and personal statement or essay questions.
- 7) Allow yourself enough time to gather required documentation such as official transcripts, medical insurance coverage forms, if needed. Some residential programs require that you have medical insurance in order to participate. If this is the case make sure you have this complete well before you begin the program.
- 8) Apply to more than one program.
- 9) Decide whether or not you can commit time to this program. If you are taking a summer course, decide how much time you will need to study and commute to class. Will this take time away from your research? In the past many of our MESA students have successfully participated in research programs while working and/or going to school. However, most students who have done this wish they had focused more on their internship by postponing the summer class for the fall semester.
- 10) Familiarize yourself with the program. Avoid blanket statements such as, "I want to be accepted to a summer research program at MIT because it's a good school." Instead talk about specific research being done at that institution and in this program.
- 11) Last but definitely not least, bring your applications to MESA so your Director or Counselor can give it the once over.

Good luck!!!



**NSF CREATE-REU:**  
**RESEARCH EXPERIENCES FOR UNDERGRADUATES IN**  
**AGRICULTURAL TECHNOLOGY & ENGINEERING**

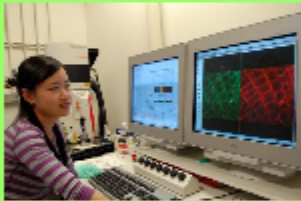


DIRECTOR— PROF. JEAN VANDERGHEYNST (AWARD# EEC-0852090)  
 COLLEGE OF ENGINEERING, UC DAVIS

**BIOTECHNOLOGY RESEARCH  
 EXPERIENCES FOR PRODUCTION OF  
 TRANSGENIC PLANTS**



**EXPRESSION OF THERAPEUTIC  
 PROTEINS OR INDUSTRIAL  
 PRECURSORS IN PLANT TISSUES**



**BIOMASS CONVERSION AND  
 FERMENTATION PROCESSES FOR  
 ALTERNATIVE FUELS**



**CONTACT:**  
 Dr. Denneal Jamison-McClung  
 Program Coordinator  
 301 Life Sciences, 1 Shields Ave.  
 Davis, CA 95616  
 Phone: (530) 752-5090  
 Fax: (530) 752-4125  
 dsjamison@ucdavis.edu

*The Collaborative Research and Education in Agricultural Technology and Engineering program at UC Davis is excited to welcome undergraduates to CREATE the future with us!*

**The Program**

A Faculty-mentored Summer Residential Undergraduate Research Experience designed to prepare aspiring engineers and scientists for careers or graduate study in plant biotechnology and interdisciplinary team-based innovation with a focus on some of the most pressing global challenges of our time:

- Rapid production technologies for plant-derived vaccine manufacturing
- Effective, affordable and accessible plant-derived therapeutics and biopharmaceuticals
- Renewable biofuels and bioproducts from plant biomass
- Improving global food security via genetically enhanced crops and improved post-harvest processing technologies

**Participant Support**

Participant housing and meals will be provided, along with a weekly stipend of \$450. Additional funds to offset travel costs may be available upon request.

**Important Dates**

January 6 <sup>th</sup>	Applications Available Online
February 10 <sup>th</sup>	Applications Due (postmark Feb 10th)
March 1 <sup>st</sup>	Program Participation Offers Made to Applicants
March 15 <sup>th</sup>	Participant Acceptances Due
June 20 <sup>th</sup> -Aug 21 <sup>st</sup>	Summer Residential Program
Aug 17 <sup>th</sup>	CREATE-REU Symposium & Poster Session

**Eligibility**

Applicants for the UC Davis CREATE-REU Summer Residential Training Program must be:

- US Citizens or Permanent Residents
- Undergraduate students pursuing a course of study in a science, technology, engineering or mathematics (STEM) discipline
- Committed to a continuous nine week residential training program to be conducted on the UC Davis campus

**\*\*\*Due to the recruitment and outreach goals of the REU program, currently enrolled UC Davis undergraduates are ineligible to apply\*\*\***

<http://create-reu.ucdavis.edu>

<http://create-reu.ucdavis.edu>



## Center of Integrated Nanomechanical Systems (COINS) at UC Berkeley

### Summer 2012 Summer Research Program

*Colleges of Engineering, Chemistry & Department of Physics*

Join our exciting nanoscience research teams on the cutting edge of advanced technologies in the areas of energy scavenging, sensing, electronics & wireless, mobility & toxicology!

#### Program Description:

- 9 week research experience: June 11, 2012-August 10, 2012
- Placement in nanoscience research lab
- Weekly research and academic seminars
- Graduate school advising and preparation
- Field trips to diverse science & engineering sites
- Students receive \$4,000 stipend, room & board at the International House, travel allowance (up to \$600).

#### Application Process:

On-line application (available October 1):

<http://nano.berkeley.edu/coins>

Deadline: January 31, 2012

Minimum GPA: 3.25

Students from underrepresented communities are encouraged to apply.

*Applicants MUST be a US citizen or Permanent Resident*



For more information, contact:  
Meltem Erol  
Director of Education & Outreach

510-643-7380  
[merol@berkeley.edu](mailto:merol@berkeley.edu)

<http://nano.berkeley.edu/coins>



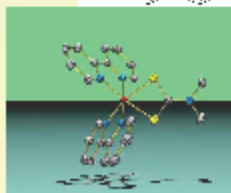


## Chemistry Summer Undergraduate Research Fellowship (Chem-SURF)

<http://www.chem.uci.edu/reu>

**Summer 2012**  
**Program Dates:**  
June 21–August 24, 2012

**Application Deadline:**  
March 15, 2012



Funded by the  
National Science  
Foundation

The Chem-SURF Program at the University of California, Irvine, provides a unique 10-week summer research opportunity for undergraduates to become fully immersed in cutting-edge research in the fields of chemical biology, chemical physics, and analytical, atmospheric, bioinorganic, bioorganic, computational, inorganic, materials, organic, physical, polymer, surface, and theoretical chemistry.

### Benefits Include:

- \$4,000 Stipend
- On-campus housing
- Travel reimbursement
- Chemistry seminars
- Professional development workshops
- Faculty mentoring
- Local industry field trips
- Library privileges
- Weekend trips and social activities to experience Southern California
- Post-program support



### Who Should Apply?

Applicants should be highly motivated and high-achieving science majors with sophomore, junior, or senior standing by the start of the REU Chem-SURF program. They must be U.S. citizens or permanent residents, and have health insurance coverage.

This program is committed to promoting diversity within the field of science. Women, underrepresented minorities, individuals from economically and socially disadvantaged backgrounds, and persons with disabilities are especially encouraged to apply.

### Contact Information:

Professor Fillmore Freeman, Ph.D.  
NSF REU Chem-SURF Program  
Department of Chemistry  
1102 Natural Sciences II  
University of California, Irvine  
Irvine, CA 92697-2025

<http://www.chem.uci.edu/reu>

# REU in MONTANA

The Solar Physics research group of the Montana State University Department of Physics will offer 10 - 12 REU positions during summer 2012

**Research** - Most projects in this program involve analysis of data from solar space missions such as SDO, RHESSI, Hinode, and STEREO, which are suitable for most math, physics, and astronomy students at the sophomore or junior level. Additionally, a few projects are available in the solar-stellar connection, dynamo theory, solar magnetohydrodynamics, and space hardware.

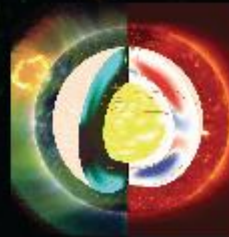
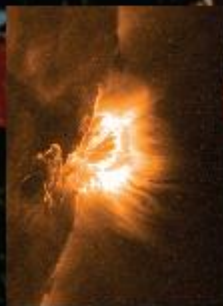
**Education** - Participants can expect to learn practical strategies and skills in research, including programming, data analysis, instrumentation, theory, and presentation. The program includes lectures on a variety of topics that are relevant to physics, astrophysics, and space weather, presented in the framework of research focused on understanding the Sun.

**Montana State University, Bozeman** - The summer months in Montana offer outstanding opportunities for outdoor recreation and other activities associated with the university and the Bozeman community. Surrounded by spectacular mountains and rivers, Bozeman is within easy driving distance of Yellowstone and Glacier National Parks.

**Practical Details** - The summer 2012 program will run from June 4 - August 10. Stipends will be \$5100 plus a \$375 food allowance for the ten week program. Travel costs to and from Bozeman are covered and university residence hall lodging is provided. For non-US participants, support for travel costs is limited to the economy roundtrip airfare from JFK/New York.

**Eligibility** - Participants must be full-time undergraduates, typically finishing their sophomore or junior years. Applications from underrepresented groups are particularly welcomed. There are no restrictions with regard to citizenship. Foreign participants are supported from non-NSF sources.

**Web Site** - Our REU web site includes participant research reports, lectures, and social activities from past years, as well as on-line application forms: <http://solar.physics.montana.edu/reu>.



<http://solar.physics.montana.edu/reu>





## Interdisciplinary REU - Research Experiences for Undergraduates in the Structure and Function of Proteins

**Application Deadline:**  
**February 15, 2012**

**Program Dates:**  
June 3 - August 10, 2012

**Program Pending Funding**

**Participant benefits:**  
\$4500 stipend  
On-campus housing  
\$1000 meal allowance  
\$300 travel allowance

Must be a U.S. Citizen  
or Permanent Resident  
to apply



Student participants will be engaged in an intensive ten-week period of hands-on experimental training and independent investigation in the areas of biochemistry, biophysics, cheminformatics, computational chemistry, enzymology, marine biology, molecular biology and plant biology. The research projects featured in this program all involve studies of the structure and function of proteins.

In addition to the research experience, students will participate in a series of weekly enrichment seminars focusing on scientific communication, graduate school admissions and scientific career options.

Rising juniors or seniors majoring in biochemistry, biology, biophysics, chemistry, computer science, engineering (chemical/biomedical), mathematics or a related discipline will be eligible for participation in the program.

Applications are available online at:  
<http://pharmacy.umich.edu/reu>.

For further information, please contact:

Dr. Cherie R. Dotson [crdotson@umich.edu](mailto:crdotson@umich.edu) / 734-615-6562 or  
Dr. Ronald W. Woodard [rww@umich.edu](mailto:rww@umich.edu) / 734-647-8429





COMPUTER-INTEGRATED SURGICAL SYSTEMS AND TECHNOLOGY ERC/  
LABORATORY FOR COMPUTATIONAL SENSING AND ROBOTICS

## 2012 RESEARCH EXPERIENCE FOR UNDERGRADUATES in *COMPUTATIONAL SENSING AND MEDICAL ROBOTICS*

May 28-Aug 3, 2012

Stipend: \$4,500

Housing is provided.

### Some of the Research Topics Include:

- ColorGlove for Visually Impaired
- Analysis of Cerebellar Shapes
- Image Segmentation
- Analysis of Diffusion Weighted Images
- Brain Machine Interface
- Smart Dexterous Hand Prosthesis
- Algorithms for Synergistic Object Recognition and Segmentation
- Image Processing Pipeline for Analysis of the Retina
- Shoe-Mounted Monitor for Cyclists
- Robotic System and Smart Instruments in Microsurgery

And many more.....

APPLICATIONS DUE BY: February 1, 2012

To submit application visit: <http://education.lcsr.jhu.edu/REU>

Phone: (410) 516-6841/ E-mail: [lakshima@jhu.edu](mailto:lakshima@jhu.edu)



JOHNS HOPKINS  
ENGINEERING

<http://education.lcsr.jhu.edu/REU>





**A Research Experience for Undergraduates in Multi-Scale Biomolecular Networks**

**May 30 - August 3, 2012**



**Welcome to the Institute of Biosciences and Bioengineering at Rice University!**

This institute hosts the nationwide National Science Foundation Research Experience for Undergraduates (NSF REU) in BioNetworks.

The goal of this program is to provide students first-hand experience with cutting-edge interdisciplinary research that is needed to predict biological functions sufficiently to reprogram cells to avoid diseases or to perform new tasks. Program dates are 5/30/12 - 8/3/12.

Students will work on research projects under faculty mentors that draw from a range

of approaches (classical biochemical and genetic to non-trivial theoretical models that require computation) to study naturally-occurring genetic networks, artificial genetic and metabolic networks, and biomolecular structure, function and evolution.

This program provides: a creative opportunity for students to develop innovative biotechnological ideas; leadership, mentorship and social retreats; special seminars and career development workshops; a \$4,300 stipend and up to \$500 in travel support; on-campus housing; a capstone research poster symposium; and an ethics and responsible conduct of research discussion seminar.

This program is open to undergraduates from all disciplines of science and engineering. Applicants may be students at any institution, but must be U.S. citizens or

permanent residents. Applicants may be freshmen, sophomores or juniors, and prior research is not required.

**Apply online by 2/10/12 at [ibb.rice.edu](http://ibb.rice.edu)**

Rice University  
Institute of Biosciences & Bioengineering  
MS 144, PO Box 1892  
Houston, TX 77251-1892  
ph 713-348-6034

The focus of this NSF REU program is biological networks, complex interactions among biomolecules that give rise to the diverse biological phenotypes observed in nature.





# TRUST-REU 2012



## An Eight-Week Summer Research Experience for Undergraduates in Cybersecurity and Trustworthy Systems

### RESEARCH ACTIVITIES

- Define a research problem
- Conduct a scientific research
- Summarize your results in a scientific paper
- Present your finding in oral and poster presentations

### PROGRAM BENEFITS

- 8-week research experience: June 4 – July 27, 2012
- Program dates may vary depending on location
- Research guided by faculty mentors and graduate students
- Guest speakers, lab tours and industry field trips
- Graduate school advising and subsidized GRE prep course
- \$4,000 Stipend
- Travel allowance up to \$600
- Room and board provided

### Contact Information

REU Coordinator  
TRUST REU Program Office  
University of California  
337 Cory Hall  
Berkeley, CA 94720

510-642-5883  
reu-info@truststc.org  
URL: www.truststc.org



*"This program helped me realize not only that I definitely want to pursue graduate school, but also where I'd like to apply and what I'd like to study!" – REU Participant*

### WHO SHOULD APPLY?

- Must be a US Citizen or US Permanent Resident
- Completed Sophomore year of study in Computer Science, Computer Engineering or related field
- Good programming knowledge in an Object-oriented language (C++ or Java)
- GPA of 3.0 or above with an upward trend
- Underrepresented students are encouraged to apply

### HOW DO I APPLY?

On-line application with additional information and instructions is available at: [www.truststc.org/reu](http://www.truststc.org/reu)  
Application deadline is **February 17, 2012**

The Team for Research in Ubiquitous Secure Technology (TRUST) is a National Science Foundation sponsored Science and Technology Center, Cooperative Agreement No. 0424422 with headquarters at the University of California, Berkeley.



[www.truststc.org/reu](http://www.truststc.org/reu)

The Marine Environmental Sciences Consortium announces....

## The 2012 Research Experience For Undergraduates

(May 14, 2012 – August 3, 2012)



### Marine Science Fellowships

Seven fellowships for undergraduate students in their junior and senior years interested in pursuing careers or graduate studies in Marine Sciences - biology, chemistry, geology and environmental sciences.

- **Sponsored by the Dauphin Island Sea Lab and the National Science Foundation.**
- **12 weeks of basic field and laboratory research.**
- **\$5,400 stipend, room & board, limited travel assistance.**

Apply on-line: <http://univ-prog.disl.org/nsf/nsfapplication.cfm>

Application Deadline: February 10, 2012

Visit our website for program requirements:

[www.disl.org](http://www.disl.org)

# DIMACS/DIMATIA/Rutgers Math/CCICADA Research Experiences for Undergraduates



U.S. Program: May 29 – July 21, 2012  
Czech Program: July 17 – August 2, 2012

**Application Deadline: January 31, 2012**

DIMACS: Center for Discrete Mathematics and Theoretical Computer Science  
DIMATIA: Center for Discrete Mathematics, Theoretical Computer Science, and Applications  
RU Math: Rutgers Department of Mathematics  
CCICADA: Command, Control, and Interoperability Center for Advanced Data Analysis



Research topics include:

- Pure Mathematics
- Applied Mathematics
- Computer Science
- Computational Sciences
- Mathematical Physics
- Biomathematics
- Homeland Security
- and more!



Students work at Rutgers University for 8 weeks, under the direct supervision of faculty mentors. A small number of REU participants are selected to participate in an extension of the research experience. These students will travel to DIMATIA, at Charles University in Prague, Czech Republic, and will participate in the Midsummer Combinatorial Workshop as well as additional REU program activities.



**To apply and to find more details, please visit:**

**<http://dimacs.rutgers.edu/REU/>**

*The DIMACS REU is an NSF REU. Only U.S. citizens and permanent residents are eligible to receive stipends and support for housing and travel costs. Students from under-represented groups and from institutions with limited opportunity for undergraduate research are especially urged to apply.*

<http://dimacs.rutgers.edu/REU/>





# Research Experience for Undergraduates

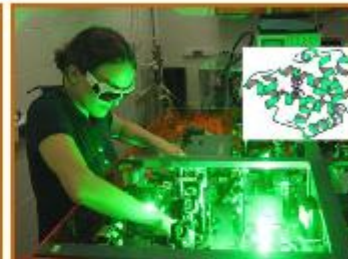
REU  
Summer 2012



### The program:

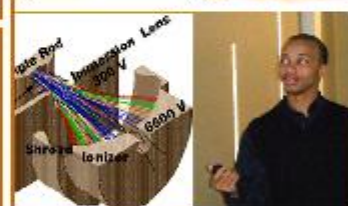
provides the opportunity for undergraduate students to engage in forefront science working on individual projects in areas:

- High energy physics
- Nuclear physics
- Astrophysics
- Condensed matter physics
- Geophysics
- Biophysics
- ...



### Program details:

- Duration: 10 weeks (05/29/12 – 08/03/12)
- Stipend: \$450/weekly
- Housing, meals and travel provided
- Weekly pizza seminar series
- Midterm and final mini-conferences
- Tour Argonne and Fermi Labs
- Social events



### Where:

Purdue University, W. Lafayette, Indiana

### Apply online at



<http://physics.purdue.edu/reu>  
(deadline: March 1, 2012)

### Info:

<http://physics.purdue.edu/reu>



<http://physics.purdue.edu/reu>





# REU Program in Physics & Astronomy



## Would you like to...

- ✓ See ripples in space-time?
- ✓ Deduce astronomical knowledge from ancient writings?
- ✓ Create clean renewable energy sources?
- ✓ Observe the oscillation of neutrinos?
- ✓ Collect cosmic rays with a balloon?

Then come be an **REU program** student in the Department of Physics & Astronomy at Louisiana State University! You can be in any undergraduate academic year and need not have a declared major, but must have completed the introductory physics sequence at your school.

Participants are lodged in apartment-style University housing and paid a stipend for food and personal expenses. Further information is available on our web page.



## Research Areas

- ✓ Astronomy, astrophysics, astro-history
- ✓ Gravitation and relativity
- ✓ Atomic/molecular/optical physics
- ✓ Quantum optics and computing
- ✓ Condensed matter physics
- ✓ Materials synthesis & characterization
- ✓ Energy and materials research
- ✓ Computational physics
- ✓ Neutrinos and cosmic rays
- ✓ Nuclear physics
- ✓ Medical and health physics

## LSU & Local Facilities

- ✓ LIGO-Livingston
- ✓ CAMD 1.3 GeV synchrotron
- ✓ Landolt Observatory
- ✓ Machine and electronics shops
- ✓ Highland Road Park Observatory
- ✓ Center for Computation & Technology

[www.phys.lsu.edu/reu](http://www.phys.lsu.edu/reu)

For questions, please contact the REU program coordinator, Dr. Matthews, at (225) 578-2740 or [kipmatth@lsu.edu](mailto:kipmatth@lsu.edu).

[www.phy.lsu.edu/reu](http://www.phy.lsu.edu/reu)



National Science Foundation Research Experience for Undergraduates  
(REU) Program  
Dept. of Defense ASSURE Program



**ARIM: AUTOMOTIVE RESEARCH AND INDUSTRIAL MENTORSHIP  
REU PROGRAM AT OAKLAND UNIVERSITY**

**May 18 – July 27, 2011**

**Website: <http://me-reu.secs.oakland.edu>**

**BENEFITS:**

Participants in this 10-week summer program receive:

- \$5,000 stipend and a small meal allowance.
- On-campus housing
- Up to \$400 to offset the costs of travel to Oakland University

**ELIGIBILITY:**

- Undergraduate engineering, science or math students graduating after December 2011
- Minimum GPA: 3.0
- Must be a US citizen or permanent resident
- **Women, minorities and undergraduate students not yet enrolled in an engineering program are strongly encouraged to apply. No prior automotive or research experience required!**

**APPLICATION DEADLINE:**  
March 7, 2011.

For application materials and more information, please visit:  
<http://me-reu.secs.oakland.edu>

**CONTACT:**

Dr. Laila Guessous  
Program director  
Dept. of Mechanical Engineering  
Oakland University  
Rochester, MI 48309  
Phone: 248-370-2183  
Fax: 248-370-4416  
[guessous@oakland.edu](mailto:guessous@oakland.edu)



The dept of Mechanical Engineering at Oakland University (OU) will once again be hosting the Automotive and Energy Research and Industrial Mentorship (AERIM) Research Experience for Undergraduates (REU) program in the spring/summer of 2011. We are searching for ten talented and motivated undergraduate students to come to OU for **10 weeks** to work on **automotive and energy-related research** projects in mechanical engineering with a special emphasis on technologies that aim to improve efficiencies of internal combustion engines, automotive manufacturing processes, automotive materials, alternative propulsion systems and lubrication and wear. No prior automotive or research experience required!

**Program highlights include:**

- Paid summer research experience
- One-on-one interactions with faculty & industry mentors
- Industrial and research lab tours
- Seminars on automotive and energy topics by experts in the field
- Interactions with automotive and energy engineers
- Information about graduate school, engineering and research careers
- Opportunity to improve communication skills
- Friendships and mentoring relationships
- A great learning experience and a lot of fun!!

**About OU:** Oakland University is located in Rochester, MI, near the world headquarters and engineering centers of Chrysler, LLC., Ford Motor Co., General Motors Corp. as well as over one hundred automotive suppliers in southeast Michigan. <http://www.oakland.edu>



**Gerstner Sloan-Kettering**  
Graduate School of Biomedical Sciences

**Program Description:**

This ten-week research program is designed for approximately 20 outstanding undergraduate students who are interested in pursuing a career in biomedically related sciences. Students in the program have the opportunity to:

- obtain hands-on research experience in cutting edge laboratories;
- interact with faculty, postdoctoral fellows, and graduate students;
- attend a weekly luncheon/seminar series of presentations by faculty;
- attend skills/development workshops to hone presentation skills, interview skills, etc.;
- attend and present at works-in-progress sessions with the cohort of SURP students;
- present their research at a special poster session at the end of the ten-week program.

GPA of 3.0 and should have completed at least college-level general biology and/or introductory chemistry.

LINK : <http://www.sloankettering.edu/gerstner/html/54517.cfm>

Application Deadline : February 1<sup>st</sup>

~~~~~  
~~~

**Summer Research Program in Ecology**

**Program Description:**

The Harvard Forest Summer Research Program in Ecology is an opportunity for students to participate in 11 weeks of mentored, paid, independent research focusing on the effects of natural and human disturbances on forest ecosystems, including global climate change, hurricanes, forest harvesting, wildlife dynamics, biodiversity and invasive organisms. The Harvard Forest is located in the town of [Petersham](#), in Western Massachusetts.

**Dates:** May 21st - August 3rd, 2012



**Stipend and Lodging:**

- Stipend of \$5500 for the 11-week session
- Free furnished housing at [Fisher House](#) or [Raup House](#)
- Free full meal plan
- Travel reimbursement for one round trip to the Forest (federal grant restrictions apply)

<http://harvardforest.fas.harvard.edu/education/reu/reu.html>

**Citizenship:** *Participation in the program is open only to those are legally authorized to be employed by Harvard University in the United States.*

Application Deadline is Friday, February 3rd, 2012.

~~~~~  
~~~

**NSF Summer Research Experience for Undergraduates (REU) Program in Cell, Developmental and Evolutionary Biology, UC Berkeley**

**Program Description:** This program is designed to expose participating students to core concepts of Cell, Developmental and Evolutionary Biology. The thirty participating faculty provide a broad range of research options in these areas. They also share a strong commitment to working with undergraduates and promoting diversity in the biosciences community at Berkeley.

Under the direct guidance of a UCB faculty mentor, usually with a graduate student or postdoctoral co-mentor, students will gain first-hand research experience and training in state-of-the-art research facilities, working on individual projects. During the first week of the program, group tutorials will survey the interconnecting fields of cell, developmental and evolutionary biology and bioinformatics. Through the remainder of the program, weekly seminars will further expose participants to the wealth of ongoing research in these areas. Professional development workshops and interactions with faculty, postdoctoral fellows, graduate students and UCB undergrads will familiarize participants with the graduate school experience, including the application process, what to expect in graduate school and the career possibilities it opens u

**Dates:** June 2 to August 11, 2012

**Stipend and Lodging:**

\$4,500 stipend

- Paid on-campus housing in International House, includes 19 meals/week
- Travel costs reimbursed up to \$500
- Excursions and social programs highlighting attractions of the Bay Area

Link: <http://mcb.berkeley.edu/nsfreu/application.php>

**Citizenship:** Limited to US Citizens and Permanent Residents

**Eligibility:** Undergraduates who will be attending a 4 year college or university in fall 2012 to work toward the Bachelor's degree. (Preference is given to students who will have completed their sophomore year by June 2012.)

**Application Deadline:** January 31, 2012

**Misc:** Targeted to students interested in PhD. Programs rather than MD. Applicants are not required to have previous research experience.

~~~~~  
~

Rockefeller University Summer Undergraduate Research Fellowship (SURF)

**Program Description:**

The Rockefeller University's Summer Undergraduate Research Fellowship (SURF) program is designed to provide qualified, highly motivated college students majoring in the life or physical sciences, an opportunity to experience laboratory research. Each year, outstanding college sophomores and juniors are chosen from a large pool of applicants. SURF students are matched according to their stated field of interest with faculty, postdoctoral researchers or graduate students. These mentors volunteer to help design and supervise individualized summer projects for their students. The fifteen students accepted into the SURF program will receive a stipend of \$3,000.00 for the 10-week period of June 6 through August 12, 2011. Free housing will be provided for students who cannot commute.

**Dates: June 4- August 10, 2012**

**Stipend and Lodging:  
\$3,000  
Free housing**

Link to apply <http://www.rockefeller.edu/surf/application/>

Citizenship: Limited to US Citizens and Permanent Residents

Application Deadline: February 1, 2012

~~~~~

Pepperdine University Summer Undergraduate Research in Biology

**Program Description:**

In the summer of 2012, the biology faculty at Pepperdine University will conduct a summer research program from May 14 – July 28, 2012, geared specifically to undergraduate students who are interested in pursuing a career in biological research, science education, environmental science, or biotechnology. The program will begin with a 14-day research orientation workshop, May 14 - May 27. During the workshop, students will be introduced to the uses and limitations of specific research tools and techniques. The workshop will culminate with a visit to the James San Jacinto Mountains Reserve near Idyllwild, California, where students will present their summer project proposals. Over the remainder of the summer, students will pursue individual research projects under the direction of faculty, and visiting scientists will hold special research seminars in each research area. The research program will conclude with a student research symposium in late July.

**Dates: May 14-July 28, 2012**

**Stipend and Lodging: Housing is provided**

Link: <http://seaver.pepperdine.edu/surb/>

Citizenship: Limited to US Citizens and permanent residents.

Application Deadline: February 15, 2012

~~~~~

## UC DAVIS

### **Program Description:**

The CBST hosts a Summer Internship Program for Undergraduate students. For a period of 8 to 12 weeks students get involved in on-going research projects in the following areas: Bioimaging, Molecular & Cellular Biophotonics and Medical Biophotonics.

Majors: Chemical, Biochemical or Biomedical Engineering, Biology, Chemistry, Physics, Biophysics, Biochemistry, Molecular Biology or related.

**Stipend and Lodging:** Students are awarded **\$500/wk** for the duration of their summer internship. This stipend is intended to cover the cost of living, including housing, food and local transportation during the internship (CBST is NOT responsible for your housing arrangements)

Link <http://cbst.ucdavis.edu/education/undergraduate/research/program-details>

Citizenship: US Citizens and Permanent Residents

Application Deadline: March 10<sup>th</sup>

Application online available January 10<sup>th</sup>

~~~~~

## JOHNS HOPKINS SIP

**Program Description:** The Summer Internship Program (SIP) provides experience in research laboratories to students of diverse backgrounds, including underrepresented minority students and students from economically disadvantaged and underserved backgrounds that have completed one - two or more years of college. The purpose of this exposure



to biomedical and/or public health research is to encourage students to consider careers in science, medicine and public health. The program runs nine to ten weeks and a stipend of \$3,000 is provided. Housing is provided near our undergraduate campus; the University has a shuttle service that provides convenient transportation between the Johns Hopkins Medicine Institutions (JHMI) and the undergraduate campus.

<http://www.hopkinsmedicine.org/graduateprograms/sip.cfm>

**Dates: May 27- August 4, 2012**

**Stipend and Lodging: \$3000 Stipend with Lodging**

~~~~~

**PRINCETON UNIVERSITY  
SUMMER UNDERGRADUATE RESEARCH PROGRAM  
IN MOLECULAR AND QUANTITATIVE & COMPUTATIONAL BIOLOGY**

**Program Description:** Each summer, the [Howard Hughes Medical Institute](#), the [Department of Molecular Biology](#), [Lewis-Sigler Institute for Integrative Genomics](#), the [Genentech Foundation](#) and the [New Jersey Commission on Cancer Research](#) provide intensive laboratory research experiences to a select group of undergraduates chosen from a nationwide pool. Each student joins a world-class research group – headed by a [Faculty member](#) – and carries out an original research project. Participants are immersed in a culture of close collaboration with other undergraduates, graduate students, postdoctoral fellows, and faculty, and thereby experience first-hand what it is like to be a scientist. Other highlights of the program include:

- research discussion groups (learn to analyze and present data)
- faculty forum (attend weekly seminars given by Princeton Faculty)
- poster session (present your research to respected scientists)
- career forums (interact with former program participants)

Over 70% of former participants have since pursued degrees in PhD, MD, or combined MD/PhD programs

**Dates: June 11 – August 10, 2012**

**Stipend and Lodging:** \$4000 stipend, students are provided with housing in Princeton dormitories and are reimbursed for [traveling](#) expenses within budgetary limits

Link

[http://www.molbio2.princeton.edu/index.php?option=com\\_content&task=view&id=321&Itemid=272](http://www.molbio2.princeton.edu/index.php?option=com_content&task=view&id=321&Itemid=272)

Application Deadline: February 1<sup>st</sup>

~~~~~

University of Washington

Program Description: The 2012 Center for Sensorimotor Neural Engineering Research Experience for Undergraduate program will be held June 18 - August 24, 2012. This 10-week program on the University of Washington's Seattle campus will provide undergraduate students with opportunities to work on research projects with investigators and to take part in workshop training sessions in ethics, communication skills, and scientific presentation skills designed to provide the undergraduate scientist with a solid foundation for graduate study.

Dates: June 18- August 24, 2012

Stipend and Lodging: \$5,000 and Housing on campus

Link: <http://www.csne-erc.org/content/research-experience-undergraduates-reu>

Deadline to Apply: February 1, 2012

~~~~~

INSET

### **Internships in Nanosystems Science, Engineering and Technology**

**Program Description: The Internships in Nanosystems Science, Engineering and Technology (INSET) program** brings science and engineering community college undergraduates to the UC Santa Barbara campus for a summer research experience. Interns gain first-hand experience in scientific investigation in a dynamic, collaborative research environment. They are matched individually with UCSB faculty and graduate student lab mentors who provide training and support. Interns attend weekly

meetings, special seminars, and have the opportunity to develop their presentation skills throughout the summer

**Dates: June 18- August 10, 2012**

**Stipend and Lodging:**

Link <http://csep.cnsi.ucsb.edu/cc/inset/howtoapply>

Application Deadline: February 28, 2011

~~~~~



**Program Description:** The Princeton Institute for the Science and Technology of Materials (PRISM) and the Princeton Center for Complex Materials (PCCM) are sponsoring research opportunities for undergraduates in disciplines related to Materials Science **summer of 2012**. Potential projects span a broad range of topics under the guidance of faculty from the departments of Physics, Chemistry, Molecular Biology, Chemical Engineering, Electrical Engineering, Mechanical and Aerospace Engineering, and Civil and Environmental Engineering. The research topics are chosen each year to complement the research of faculty associated with the Princeton Center for Complex Materials.

Application Deadline: March 1, 2012

<http://www.princeton.edu/~pccm/outreach/reu.htm>



**Program Description:** The **Plant Genome Research Projects REU** are seeking students early in their academic careers, hoping that an early research experience might ultimately lead them to pursue science degrees and careers. Last year nearly 20% of their interns were from community colleges across the US. The program provides travel, housing, some meals

and a generous stipend to limit the financial barriers that many our students face.

Since 2003, undergraduate students from across the country have been coming to the Boyce Thompson Institute and Cornell University to participate in their 10-week summer internship program, By participating in PGRP summer internships, students gain a broader knowledge of plant genetics, take away a better understanding of genuine scientific research and connect with others that are interested in careers in science and research.

<http://bti.cornell.edu/index.php?page=Education&section=Internships#page=PGRPSummerInternships>

**Dates: June 4 - August 10, 2012**

Application Deadline: February 17, 2012

~~~~~

The University of Oregon (UO) Research Experiences for Undergraduates Summer Program in Molecular Biosciences (UO-REU) offers fellowship opportunities for undergraduate students from other Universities and Colleges to participate in ongoing research in Life Sciences laboratories at UO during the Summer months.

UO-REU Interns receive: Summer Stipend for average of 12 weeks, round-trip travel (from home), room and board while participating in the program, and a summer Pass to the UO Student Recreation Center. In order to be eligible a student must:

- Have completed at least one year of undergraduate coursework by summer
- Be undergraduates in good standing
- Be strongly motivated to participate in ongoing research projects
- Be US citizens or permanent residents

*PLEASE NOTE: Special consideration is given to qualified students who are also members of a group under-represented in the sciences (e.g., low income and first generation, Native American, African American, Latino, or Pacific Islander) and students with limited access to research opportunities.*

<http://biology.uoregon.edu/UOREU/applying.html>



Application Deadline: February 27, 2012



## National Nanotechnology Infrastructure Network NNIN

### **Program Description:**

During the summer of 2012, the National Nanotechnology Infrastructure Network will host a Research Experience for Undergraduates (NNIN REU) Program from June through August. Engineering and science students with broad interests across disciplines focusing on nanotechnology are eligible to apply (see restrictions and eligibility requirements below).

The chosen undergraduates taking part in this ten-week program will receive hands-on nanoscience and technology experience through research, with applications to bio-engineering, chemistry, electronics, materials science, optics, optoelectronics, physics, and the life sciences. We will also host a small number of projects studying the social and ethical issues (SEI) of nanotechnology. The [SEI](#) projects are well suited to communications majors, as well as science majors

### Sites Include:

ASU NanoFab, Arizona State University, Tempe, AZ

Cornell NanoScale Science & Technology Facility, Cornell University, Ithaca, NY

Nanotechnology Research Center, Georgia Institute of Technology, Atlanta, GA

Center for Nanoscale Systems, Harvard University, Cambridge, MA

Howard Nanoscale Science & Engineering Facility, Howard University, Washington, DC

Penn State Nanofabrication Facility, Penn State University, University Park, PA

Stanford Nanofabrication Facility, Stanford University, Stanford, CA

Nanotech@UCSB, University of California Santa Barbara, Santa Barbara, CA

Colorado Nanofabrication Laboratory, University of Colorado, Boulder, CO

Lurie Nanofabrication Facility, University of Michigan, Ann Arbor, MI

Nanotechnology Center, University of Minnesota-Twin Cities, Minneapolis, MN

Microelectronics Research Center, University of Texas, Austin, TX

Center for Nanotechnology, University of Washington, Seattle, WA

Nano Research Facility, Washington University, St. Louis, MO

Stipend and Lodging: \$4,000 plus housing and reasonable travel expenses to site.

Link [http://www.nnin.org/nnin\\_2012reu.html](http://www.nnin.org/nnin_2012reu.html)

Application Deadline: February 8<sup>th</sup>

~~~~~

The University of Colorado invites undergraduates to apply for a summer Research Experience for highly motivated students interested in solar and space physics. Students will work with scientists at the University of Colorado's Laboratory for Atmospheric and Space Physics (LASP) or at the National Center for Atmospheric Research's (NCAR) High Altitude Observatory (HAO), NOAA's Space Weather Prediction Center (SWPC), the Southwest Research Institute (SwRI), or North West Research Associates (NWRA) on projects spanning the field of solar and space physics, from instrument hardware to data analysis to modeling of the Sun-Earth system.

The program begins with a summer school in solar and space physics and continues with seminars and discussions while you work at one of the participating laboratories, providing peer-to-peer collaboration opportunities. At the end of the summer, you will present your research findings.

**Dates: June 10 - August 5, 2012**

**Stipend and Lodging: \$500 week plus housing and food allowance**

Link <http://lasp.colorado.edu/home/education/reu/>

Application Deadline: February 1, 2012

~~~~~

**Summer Medical and Dental Education Program (SMDEP)** is a **FREE** (full tuition, housing, and meals) six-week summer academic enrichment program that offers freshman and sophomore college students intensive and personalized medical and dental school preparation.

The program is looking for freshman and sophomore students with a minimum gpa of 2.5  
Students must be a US Citizen or permanent resident visa.

Each SMDEP site makes their admissions decisions on a "first come, first serve basis." *Please apply sooner rather than later to increase your chance of being selected.*

- **Case Western Reserve University Schools of Medicine and Dental Medicine** (Ohio)
- **Columbia University College of Physicians and Surgeons and College of Dental Medicine** (N.Y.)
- **David Geffen School of Medicine at UCLA and UCLA School of Dentistry** (Calif.)
- **Duke University School of Medicine** (N.C.)
- **Howard University Colleges of Arts and Sciences, Dentistry and Medicine** (D.C.)
- **The University of Texas School of Dentistry and Medical School at Houston** (Texas)
- **UMDNJ-New Jersey Medical and New Jersey Dental Schools** (N.J.)
- **University of Louisville Schools of Medicine and Dentistry** (Ky.)
- **University of Nebraska Medical Center, Colleges of Medicine and Dentistry** (Neb.)
- **University of Virginia School of Medicine** (Va.)
- **University of Washington Schools of Medicine and Dentistry** (Wash.)
- **Yale University School of Medicine** (Conn.)

<http://www.smdep.org/start.htm>

~~~~~

## **MIT Massachusetts Institute of Technology**

Program Description: The HST Summer Institute is part of MIT's effort to help facilitate the involvement of talented students in engineering and science research, in particular underrepresented minorities, first-generation college students, and those from disadvantaged backgrounds.

The HST and i2b2 Bioinformatics and Integrative Genomics program (BIG) introduces students to the intersection of quantitative and biomedical sciences, providing them with broad knowledge of clinical relevancy as well as specific skills in the information science of genomics. BIG brings together nationally recognized leaders from the basic biological sciences, computer science, genomics, bioinformatics and epidemiology. Undergraduate students interested in pursuing a career in bioinformatics and genomics are eligible to participate in the nine week Summer Institute in Bioinformatics and Integrative Genomics.

The Summer Institute offers unique, hands-on research opportunities to outstanding, highly motivated students who are currently sophomores, juniors, seniors, or in their first year of graduate school. Students engage in research in a scientific community internationally recognized for its leadership and commitment to excellence

<http://hst.mit.edu/servlet/ControllerServlet?handler=PublicHandler&action=browse&pageId=2044>

**Dates: June 11 – August 10, 2012**

**Stipend and Lodging: \$3500 Housing at MIT**

Application Deadline: January 31, 2012

~~~~~

**Program Description:** SRI is a nonprofit research organization located in the San Francisco Bay Area of California. The Molecular Physics Laboratory includes approximately 20 professional scientists and 8 postdoctoral associates. Their work covers a wide range of topics in the areas of atomic, molecular, and biological physics as well as many areas extending into chemical physics, physical chemistry, and solid state physics. A wide variety of experimental and theoretical projects are available for undergraduate participation, including studies of atmospheric chemistry, energy transfer in



molecular collisions, materials science, trace species detection, ion physics, laser diagnostics, biomedical optics and biophysics. Many of the projects involve the use of lasers for detecting and analyzing atoms, molecules, and surfaces.

The REU program at the SRI Molecular Physics Laboratory provides opportunities for outstanding undergraduates to participate in research at SRI and to benefit from the collegial atmosphere of collaboration and communication among all members of the laboratory. SRI is proud to host its nineteenth year of the REU program. More than 160 students have participated in this program during the previous 18 summers and have had excellent experiences in laboratory research, frequently leading to publications.

<http://www.sri.com/psd/reu/index.html>

**Dates: May 29 – August 17, 2012**

**Stipend and Lodging: \$5,000**

Application Deadline: February 13, 2012

~~~~~

**Program Description:**

National Aeronautics and Space Administration Undergraduate Student Research Program (USRP) offers undergraduates across the United States mentored internship experiences at NASA Centers and research support facilities. The NASA Undergraduate Student Research Program is NASA's largest nationwide internship program.

NASA USRP is an internship program that offers NASA research and development opportunities to undergraduate students. USRP internship opportunities give students the ultimate workforce preparatory experience for careers in Science, Technology, Engineering and Mathematics (STEM). USRP is one of most highly comprehensive internship programs for undergraduate students within the STEM majors. Students work on practical problems that will see real applications in aerospace or on future NASA missions. These immersive NASA opportunities combine scientific research with professional hands-on engineering. A USRP internship will be the first step toward a career at NASA, or within the science and engineering workforce. USRP internship opportunities are offered year round in the Fall,

Summer and Spring.

The USRP experience is a NASA internship that places qualified undergraduates with outstanding NASA mentors in a challenging working environment. Students from around the country work on a NASA project developed to meet the needs and goals of the NASA Center and Mission Directorate. Through the USRP website students apply for the internship program and NASA mentors select students for available project positions. The USRP website is also a valuable resource of information in regards to NASA internships and NASA Centers and NASA research focus areas. Research NASA's wide variety of scientific and technical research areas through the USRP website and find your career vision through a NASA USRP internship.

Apply now and join NASA for the experience of a lifetime!

**Now Accepting Applications in SOLAR**

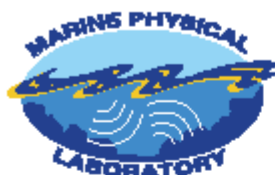
<https://solar.nasa.gov/web/public/main/>

Summer 2011 Session Deadline – February 1



# Marine Physical Laboratory

## Summer Internship Program 2012



The Marine Physical Laboratory (MPL) is an organized research unit of the University of California, San Diego (UCSD) and lab at the Scripps Institution of Oceanography.

Originally established as a Navy-orientated research laboratory in 1946, MPL has maintained a strong multidisciplinary research program consisting entirely of sponsored projects, with a large sponsorship from the Department of Defense (DOD) and the National Science Foundation (NSF).

MPL is currently seeking applications for its 2012 Summer Internship Program. Applicants should be inquisitive and motivated first, second or third year undergraduate students with a strong background in quantitative science with majors in Marine Science, Applied Mathematics, Chemistry, Physics, and Engineering. Applicants must also be U.S. citizens or permanent residents.



R/V FLIP (FLoating Instrument Platform), developed and still maintained by MPL for marine research, represents a novel approach to achieving more precise observations on board a vessel with its unique "flipping" design



### Applicants Should:

- be currently enrolled as a 1st, 2nd or 3rd year undergraduate student at a college or university with a major applicable to research done at MPL and should not be in your senior year
- be considering a career in scientific research
- be available to start at MPL in La Jolla, California on or after June 1, 2012 and work the duration of the internship, 10 consecutive weeks from the start date
- be a U.S. citizen or permanent resident and not have already been an MPL intern

### To Apply:

- Applications will be accepted December 16, 2011 - February 24, 2012
- Visit <http://www.mpl.ucsd.edu> to complete the application online



MPL ocean optics experiment underway on the beach beneath SIO's pier

Summer Intern salary will be \$14.00 per hour, not to exceed 40 hours per week. This program lasts for approximately 10 consecutive weeks.

This internship is located at Scripps in beautiful La Jolla, California.

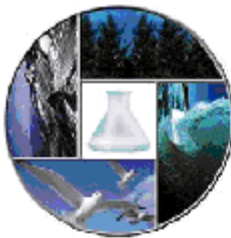
Deadline for applications will be February 24, 2012. Visit <http://www.mpl.ucsd.edu> and follow the "Summer Internship Program" link to view all of the requirements and submit your application online.

UCSD is an Equal Opportunity Employer, with a strong institutional commitment to excellence through diversity

<http://www.mpl.ucsd.edu/>







# UC DAVIS

## Short Term Educational Experience in Research

### Environmental Toxicology 2012

**Purpose:** To provide research experience for highly qualified undergraduates who are considering graduate school and careers in environmental health sciences.

**Description:** Students work full time in research labs on projects of mutual interest, participate in lab research conferences, present written and oral reports on their work, attend seminars on special topics and receive independent study credit.

**Duration:** 8-10 weeks between 6/11/12 and 9/14/12

**Eligibility:** Applicants must be U.S. citizens or permanent residents who will have completed at least one year of undergraduate education by summer. Students are selected on the basis of their academic record, recommendations from their professors and academic advisers, and future career goals. The goal of the program is to encourage and prepare highly qualified undergraduate students to attend graduate school and pursue a career in environmental health sciences.

**Financial:** Successful applicants will receive a stipend and a housing allowance.  
Summer Session fees are provided.

- Application:**
1. Fill out the application located on our website at [www.envtox.ucdavis.edu/niehs\\_summer](http://www.envtox.ucdavis.edu/niehs_summer)
  2. Submit official transcripts of undergraduate grades.
  3. Submit 2 letters of recommendation.

Return to:  
NIEHS Undergraduate Training Grant Program Manager,  
Department of Environmental Toxicology  
University of California, Davis, CA 95616-8588.

Deadline: **Friday, February 17, 2012**

Notification: On or before March 31, 2012

**Information:** Contact: NIEHS Training Grant Manager  
Department of Environmental Toxicology,  
University of California, Davis, CA 95616-858  
E-mail: [etoxniehs@ucdavis.edu](mailto:etoxniehs@ucdavis.edu)  
Fax: 752-5593

[http://www.envtox.ucdavis.edu/niehs\\_summer/](http://www.envtox.ucdavis.edu/niehs_summer/)

## UC SANTA CRUZ SURF-IT

**Program Description:** The University of California Santa Cruz (UCSC) Summer Undergraduate Research Fellowship in Information Technology (SURF-IT) offers opportunities for both UCSC students and non-UCSC students. SURF-IT provides an intensive and personalized summer program for women, minority, or disadvantaged undergraduates. SURF-IT includes a research experience supervised by a UCSC Baskin School of Engineering faculty member. Scholars also have weekly meetings focused on graduate school preparation, how to present research results, research ethics, as well as field trips to local neighboring Silicon Valley research laboratories, and of course a number of social activities. SURF-IT is sponsored by the [Department of Computer Engineering](#) and the [National Science Foundation](#)

<http://surf-it.soe.ucsc.edu/>

**Dates: June 24- August 23**

**Stipend and Lodging: \$4,000 meals and housing at UCSC**

Application Deadline: February 15, 2012

~~~~~

## UCSF

**Program Description:** UCSF is proud to offer summer research opportunities for undergraduate and master's students in the health sciences. College students planning to earn a PhD in the field spend up to 10 weeks working with UCSF faculty members on research projects. Students selected for summer research at UCSF will participate in seminars, lectures, and social events, creating a cohesive community of student researchers. At the end of the program, students will submit abstracts and give presentations of their research. Although the funding sources for these programs vary, students in the following programs will participate primarily as a single group.

Application Deadline: February 1

<http://graduate.ucsf.edu/content/summer-research-opportunities>



## **APS/IBM Research Internship for Undergraduate Women**

The American Physical Society and IBM co-sponsor a research internship program for undergraduate women. The goal is to encourage women students to pursue graduate studies in science and engineering.

### **Award**

The internships are salaried positions typically 10 weeks long at one of three IBM research locations (San Jose, CA, Austin, TX, or Yorktown Heights, NY), and give the opportunity to work closely with an IBM mentor. The Watson lab has a full range of research, as does the Almaden lab, and the Austin lab focuses on software and systems. Research areas of the internship are individually chosen so as to optimize the match between the skills and interests of the student, and the ongoing research programs of the laboratory. Information about the sites and their research may be found at:

- ▶ [IBM Research](#)
- ▶ [Almaden Research Center](#)
- ▶ [Watson Research Center](#)
- ▶ [Austin Research Laboratory](#)

The starting and ending dates are chosen so as not to conflict with the student's school schedule. Assistance in finding and renting housing will be provided.

- Must be female with sophomore or junior standing at a U.S. college or university at the time of application
- Must be majoring in chemistry, physics, materials science or engineering, computer science or engineering, chemical, electrical, mechanical engineering, or biology, if it has an emphasis on one of the other areas listed

**Must have a minimum 3.0 GPA**

**Application Deadline: February 1, 2012**



## **SUMMER RESEARCH AT IBM FOR MINORITY STUDENTS**

IBM sponsors a research internship program for under-represented minorities. The goal is to encourage under-represented minority students to

pursue graduate studies in science and engineering.

Must be under-represented minority with sophomore or junior standing at a US college or university at the time of application. Students must be majoring in chemistry, physics, materials science or engineering, computer science or engineering, chemical, electrical, mechanical engineering, and have a minimum 3.0 gpa.

<http://www.almaden.ibm.com/almaden/diversity/>

Application Deadline: February 1

~~~~~

**Program Description:**

The CLIMB (Collaborative Learning and Integrated Mentoring in the Biosciences) Program at UB, in association with the Department of Pharmacology and Toxicology, has created The CLIMB (Undergraduate Program) UP for Summer Research, a summer research experience for undergraduate students to perform research and gain understanding of graduate career opportunities

<http://www.acsu.buffalo.edu/~climb/CLIMBUP.html>

**Dates: June 4 - July 27, 2012**

Application Deadline February 15, 2012

~~~~~

**Program Description:**

Northwestern University Nanoscale Science & Engineering Center Hands-on research infuses the traditional undergraduate curriculum with excitement. Through its Research Experience for Undergraduates (REU) summer program, NU-NSEC provides students with a glimpse into the life of a scientific researcher as well as opportunities to meet and work with world-renowned scientists. Under the leadership of Professor Mark Hersam, REU is held for a nine-week period each summer. Participants engage in full-time research on a



nanotechnology-related topic. They attend regular group meetings, which give them opportunities to share their progress and gain a broad overview on a wide array of scientific projects. Additional activities include tours of Northwestern facilities and laboratories, special lectures, field trips, technical writing workshops, a public speaking seminar, and a summer picnic

<http://www.nsec.northwestern.edu/REU.htm>

Stipend and Lodging: \$4500 and lodging at Northwestern Dormitories

Application Deadline: February 15

~~~~~

**US Department of Energy Community College Institute**

This program places students from community colleges in paid internships in Science and Engineering and Technology at any of several different locations. Because of the comprehensive nature of this program many of the participants have felt it has had an enormous influence on their careers. Students work with scientists or engineers on projects related to the laboratories' research programs. They also attend career planning and numerous training/informational sessions. The different laboratories each offer different research opportunities.

Argonne National Laboratory

Brookhaven National Laboratory

Lawrence Berkeley National Laboratory

Lawrence Livermore National Laboratory

Oak Ridge National Laboratory Pacific Northwest National Laboratory

Deadline: **January 10, 2012**

Students are advised to apply in early December or January early.

<https://applicationlink.labworks.org/applicationlink/default.htm>

~~~~~

The DOE Office of Science funds the SULI program at Pacific Northwest

National Laboratory (PNNL). SULI provides 10- to 16-week summer and semester research internships to undergraduate students in the areas of science, mathematics, engineering, technology, and science policy. Each student is assigned to a Laboratory staff scientist in a specific area of research related to the student's interests and academic major

<http://science-ed.pnl.gov/students/undergrad/suli.stm>

Application Deadline: **January 10, 2012**

Students are advised to apply in early December or January early.

~~~~~

Internships at Lawrence Livermore National Labs Lawrence Livermore National Labs has several internship positions available for undergraduate students in all MESA majors. Please visit <https://careers.llnl.gov/> and apply for these positions where you can gain valuable experience at this world renown national laboratory.

**IMPORTANT:** Please be sure that you identify yourself as a MESA Student. You can do so by applying online selecting referral category –Campus Recruitment|| and using the source code –CA-MESA|| Step by Step instructions are provided at the bottom of this email so that you can gather required materials beforehand.

How to apply for an internship with Lawrence Livermore National Laboratory:

Step One: Browse open positions and add to job cart

Step Two: Enter contact info and create login

Step Three: Enter resume in text format including contact information for two references

**Step Four : Enter Referral Category "Campus**

**Recruitment" Step Five : Referral Source "CA-MESA"**

Step Six: Student will select part-time or full time and department

Step Seven: Submit application

